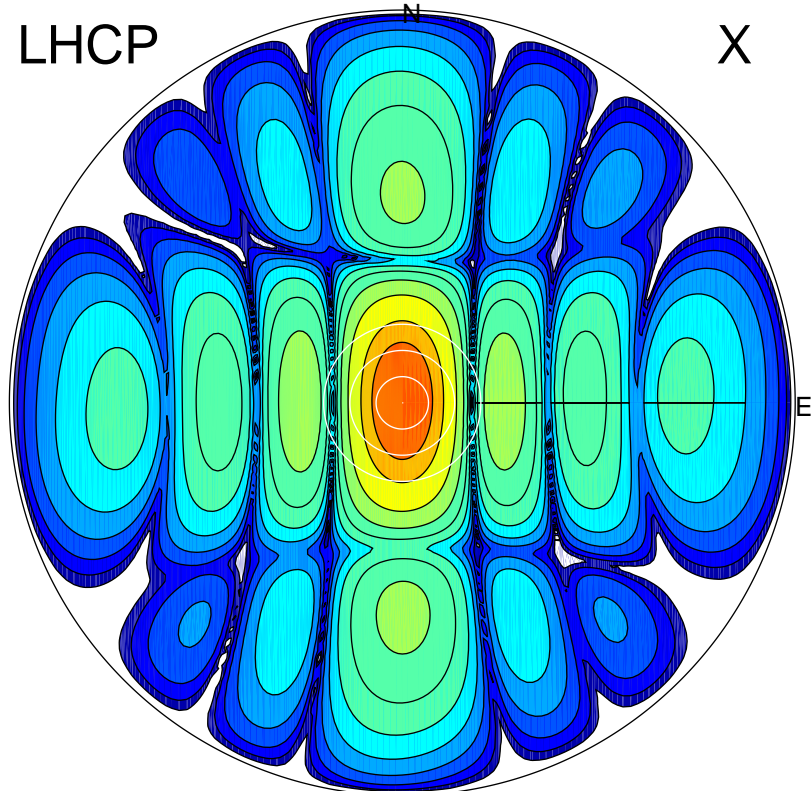


2017-11-24 11:40:00 A2 4.04051800 MHz 214.0 kW

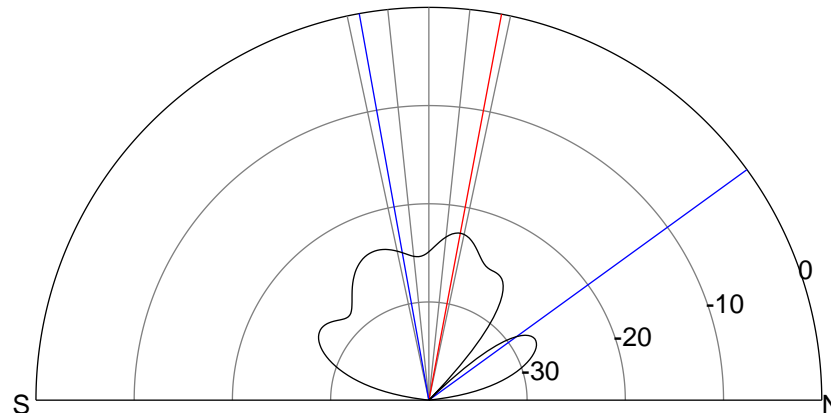
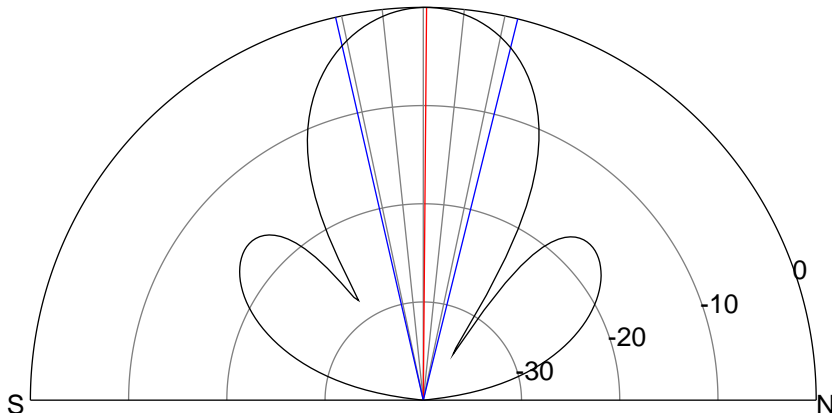
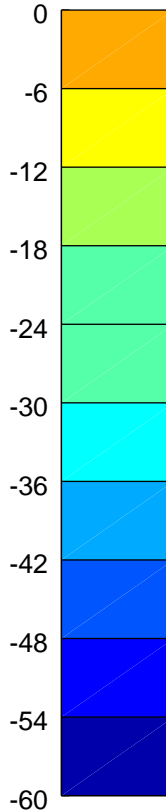
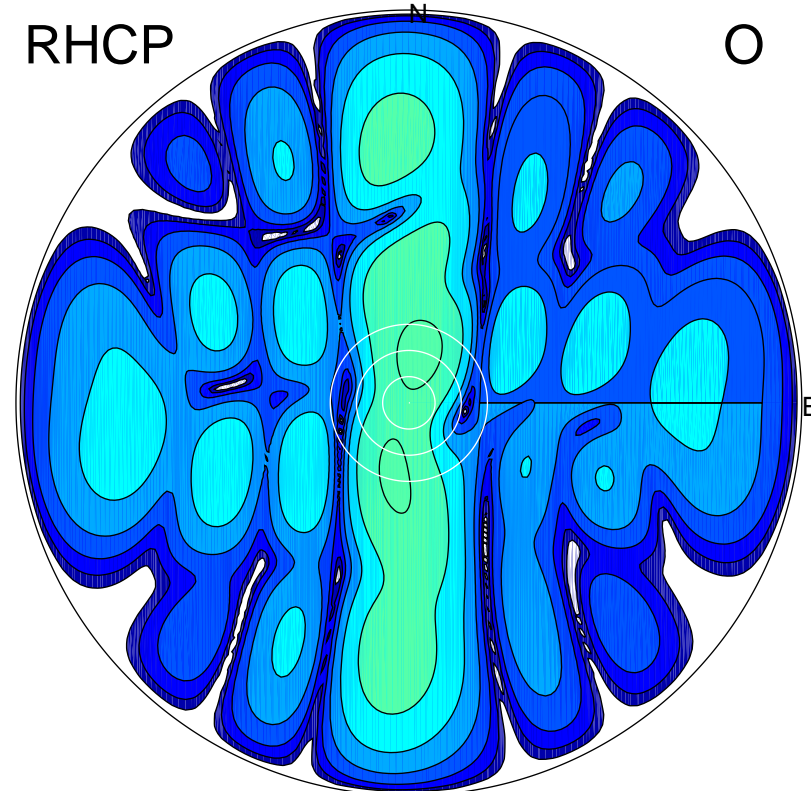
LHCP

X



RHCP

O



ERP 19.9 MW

Peak gain 19.7 dBi at Az 54 Zen 0
RHCP gain -5.2 dBi
N-S peak 19.7 dBi at Zen 0.5
N-S -3 dB beamwidth 26.8 deg.

ERP 0.1 MW

Peak gain -2.6 dBi at Az 13 Zen 12
LHCP gain 17.2 dBi
N-S peak -3.0 dBi at Zen 10.7
N-S -3 dB beamwidth 64.3 deg.