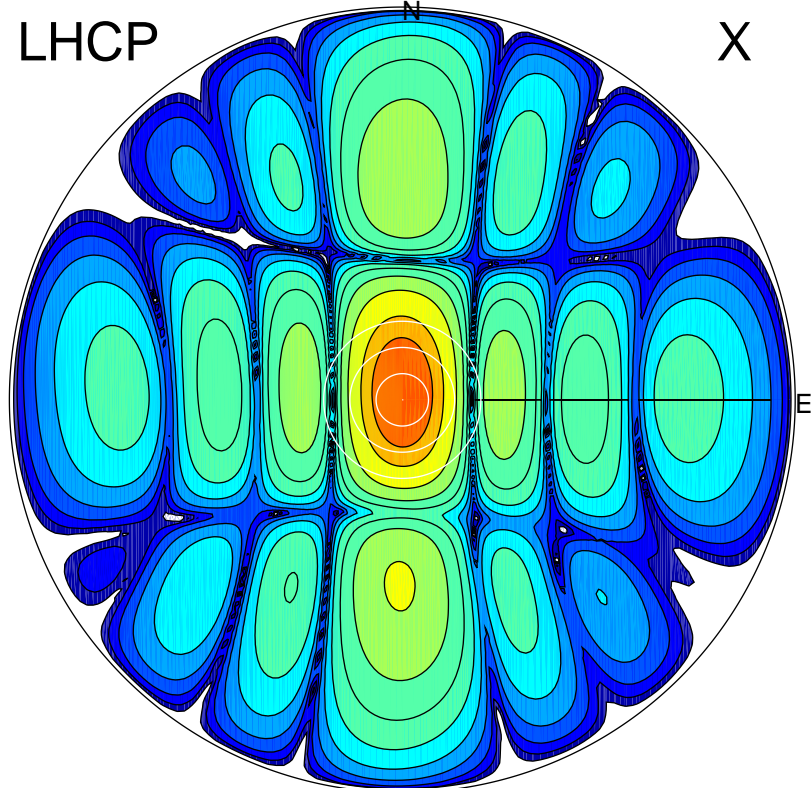


2017-11-24 11:40:00 A2 4.04000000 MHz 169.0 kW

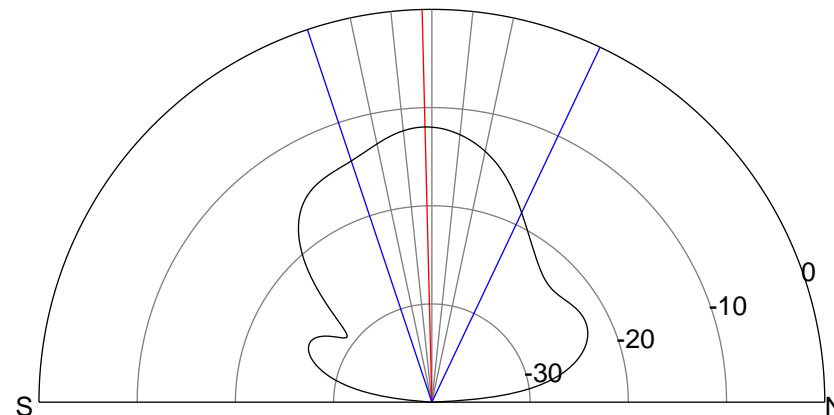
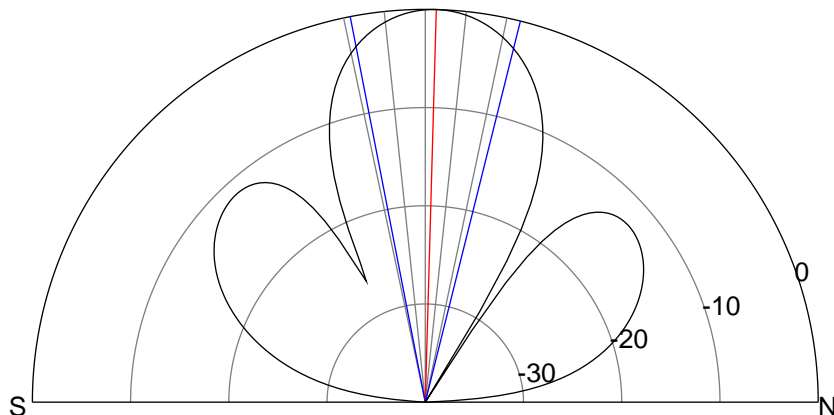
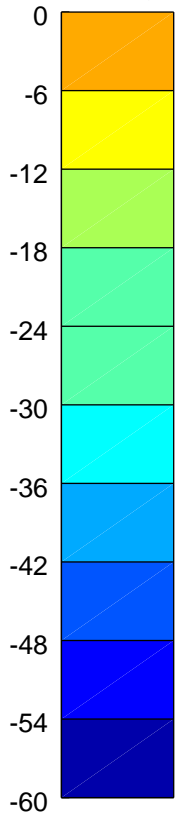
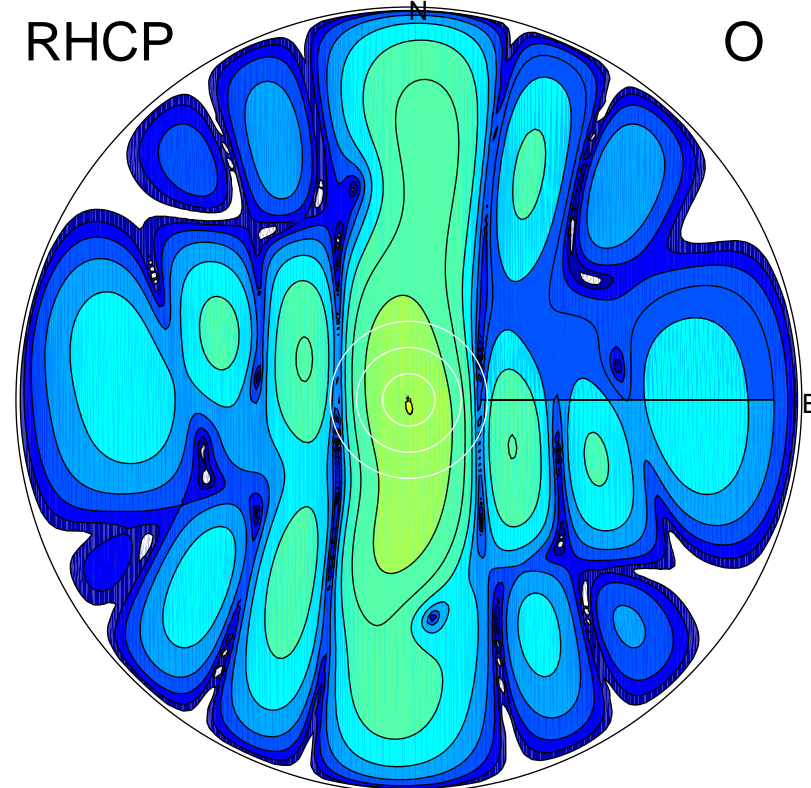
LHCP

X



RHCP

O



ERP 14.3 MW

Peak gain 19.3 dBi at Az 0 Zen 2
RHCP gain 7.2 dBi
N-S peak 19.3 dBi at Zen 1.6
N-S -3 dB beamwidth 25.0 deg.

ERP 0.9 MW

Peak gain 7.3 dBi at Az 182 Zen 1
LHCP gain 19.2 dBi
N-S peak 7.3 dBi at Zen -1.4
N-S -3 dB beamwidth 43.8 deg.