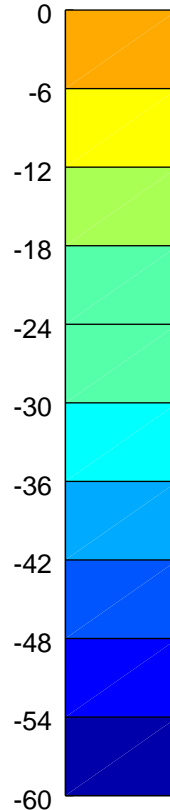
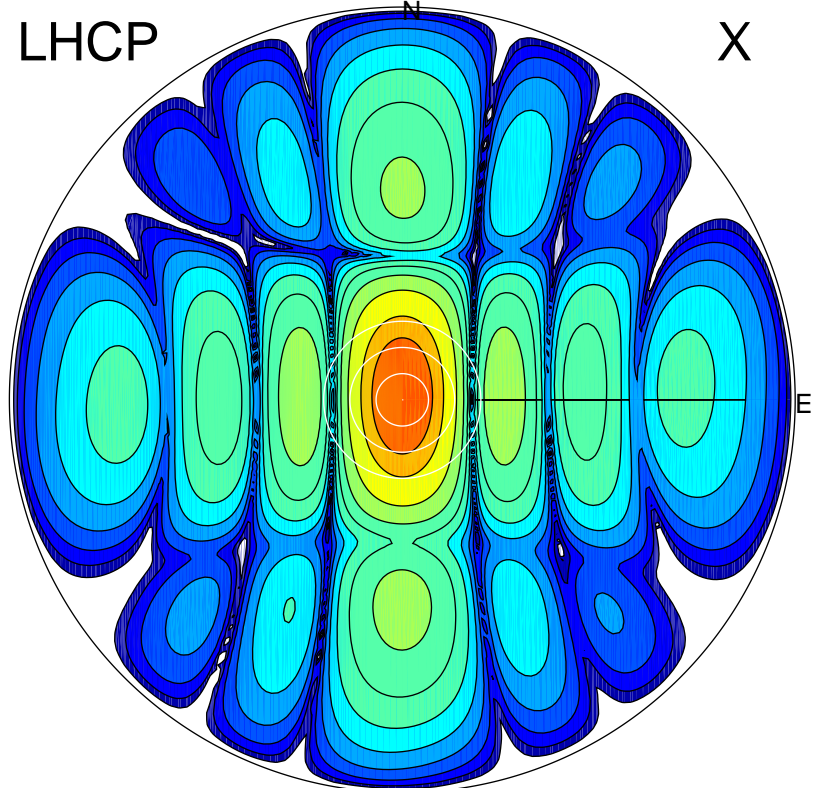


2017-11-24 11:38:00 A2 4.04051800 MHz 122.0 kW

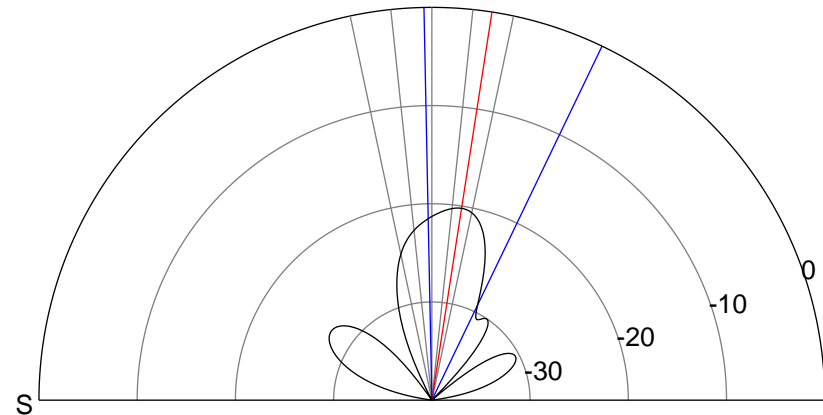
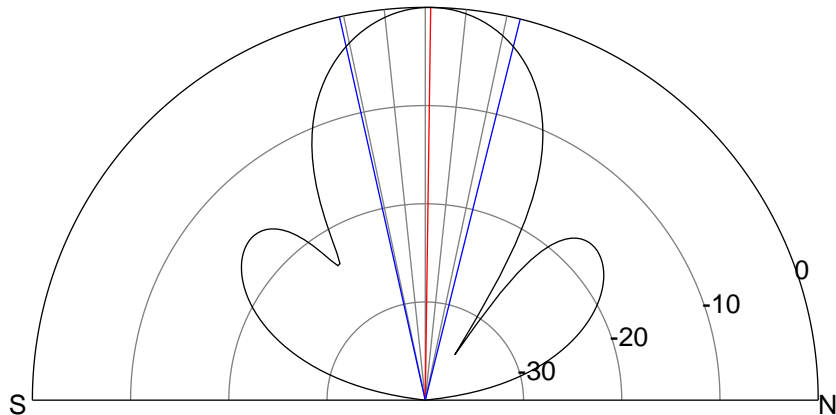
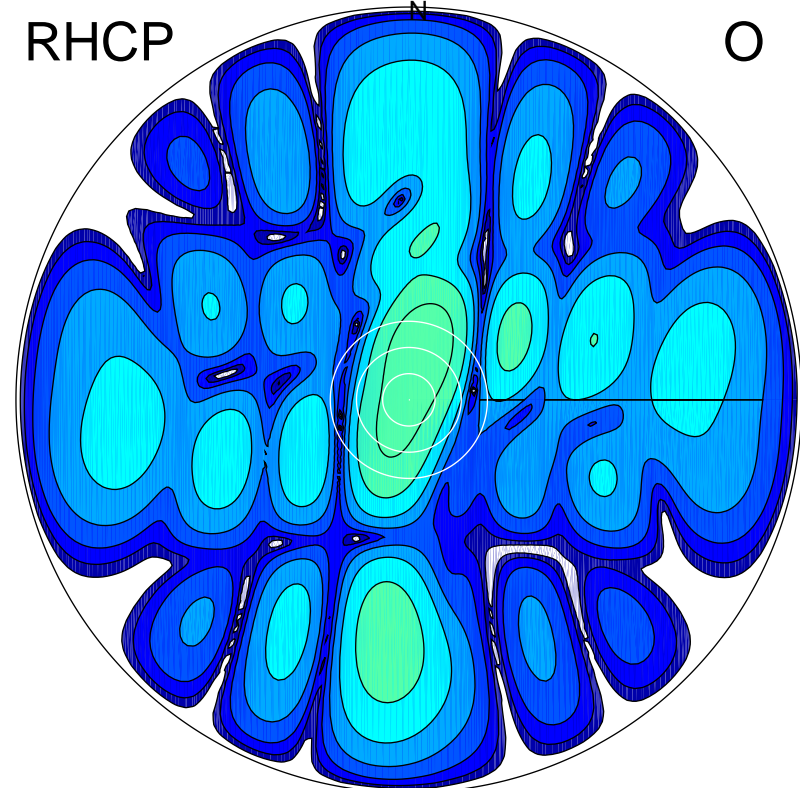
LHCP

X



RHCP

O



ERP 11.4 MW

Peak gain 19.7 dBi at Az 16 Zen 1
RHCP gain -1.4 dBi
N-S peak 19.7 dBi at Zen 0.8
N-S -3 dB beamwidth 26.6 deg.

ERP 0.1 MW

Peak gain -0.1 dBi at Az 15 Zen 11
LHCP gain 17.7 dBi
N-S peak -0.5 dBi at Zen 8.8
N-S -3 dB beamwidth 26.8 deg.