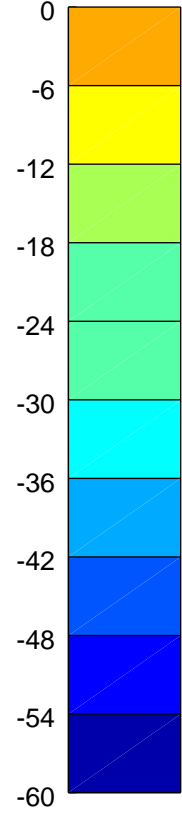
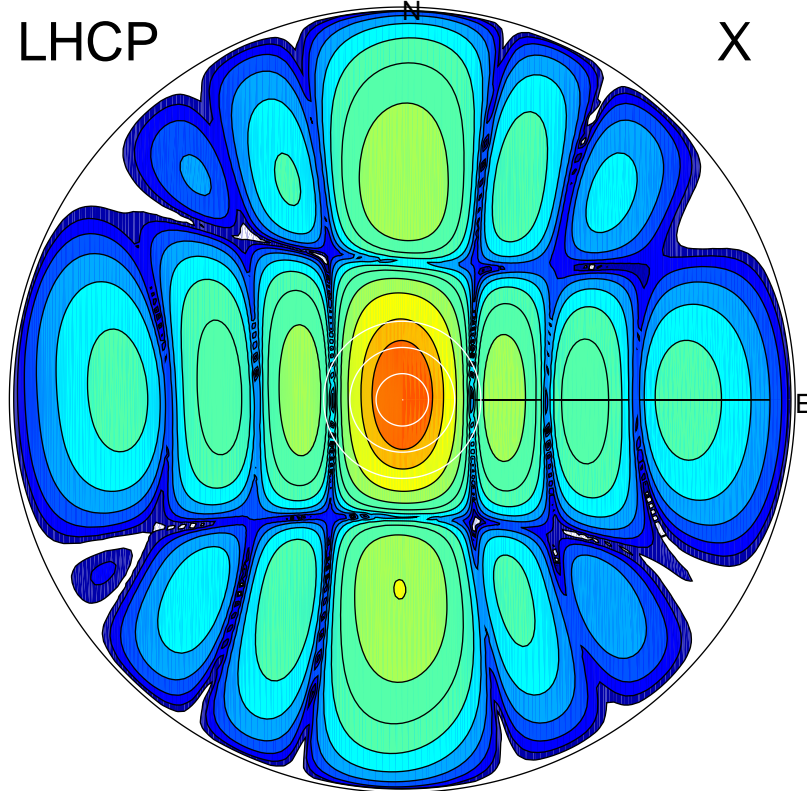


2017-11-24 11:38:00 A2 4.04000000 MHz 97.0 kW

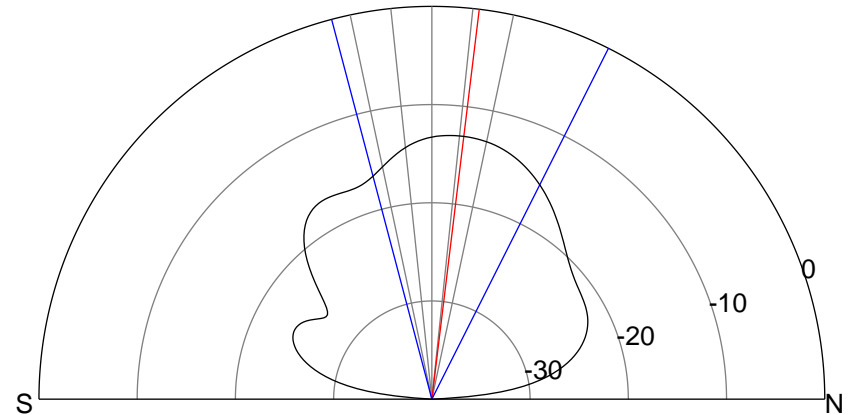
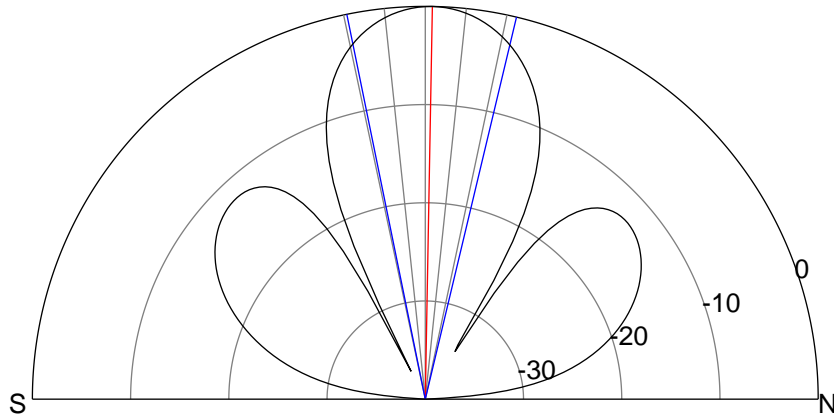
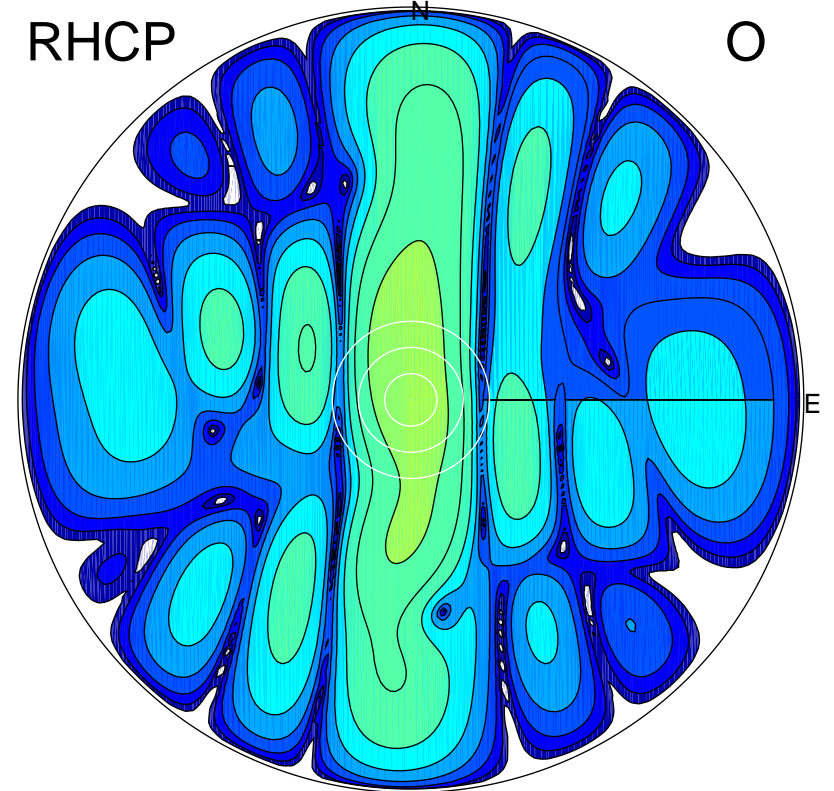
LHCP

X



RHCP

O



### ERP 8.4 MW

Peak gain 19.4 dBi at Az 4 Zen 1  
RHCP gain 6.1 dBi  
N-S peak 19.4 dBi at Zen 1.0  
N-S -3 dB beamwidth 24.9 deg.

### ERP 0.4 MW

Peak gain 6.4 dBi at Az 350 Zen 8  
LHCP gain 18.4 dBi  
N-S peak 6.3 dBi at Zen 6.9  
N-S -3 dB beamwidth 41.5 deg.