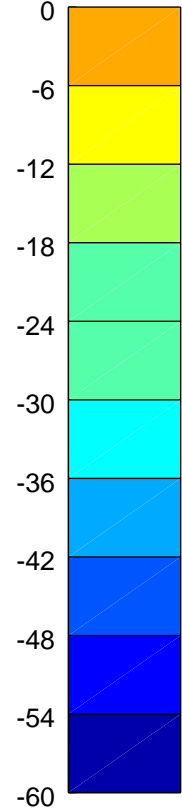
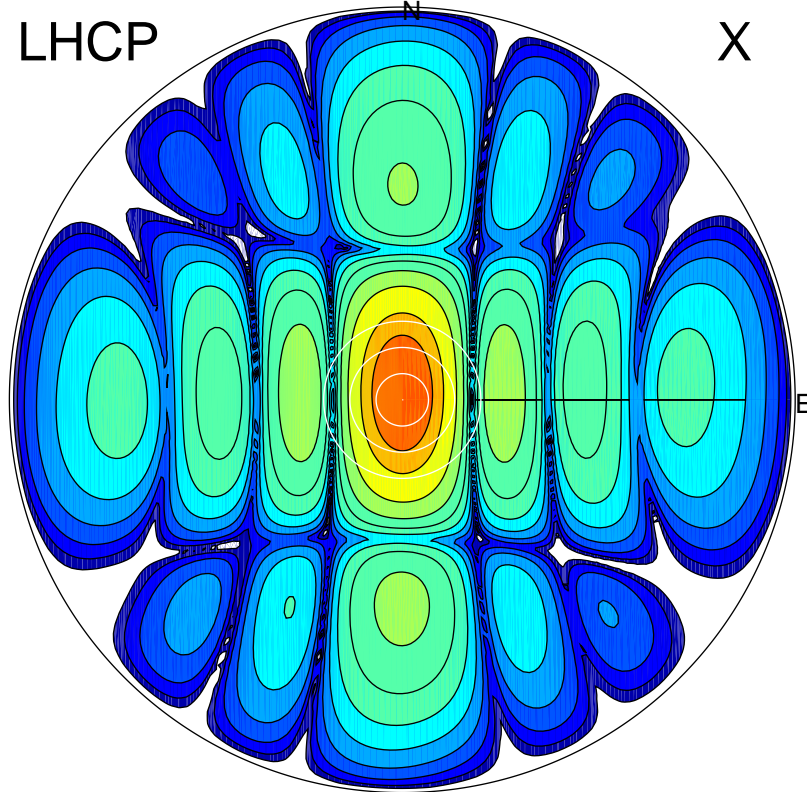


2017-11-24 11:36:00 A2 4.04051800 MHz 35.0 kW

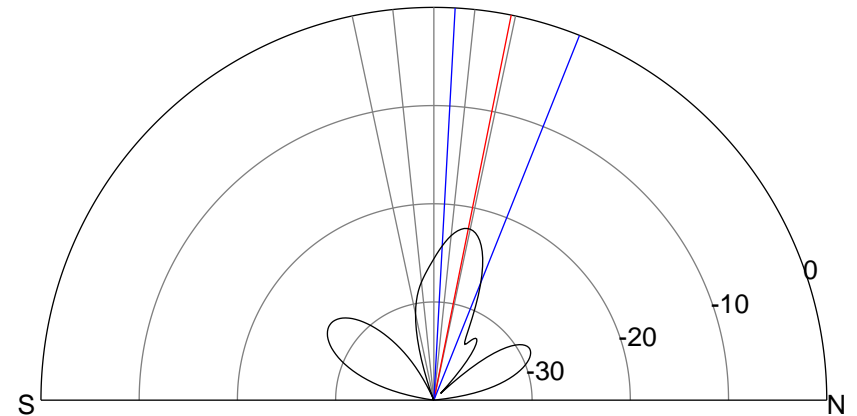
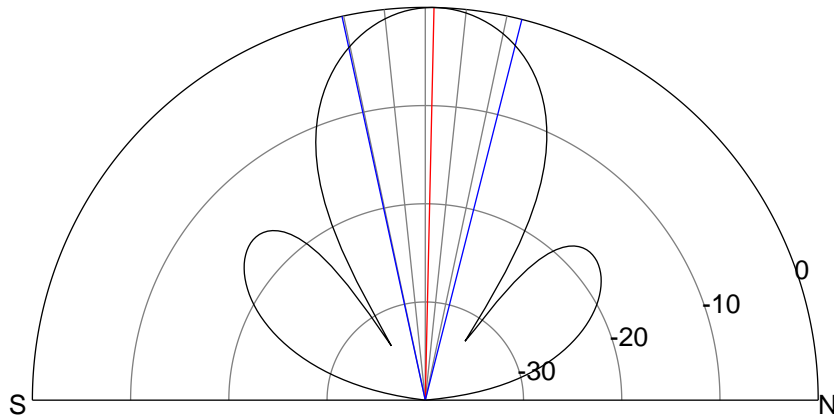
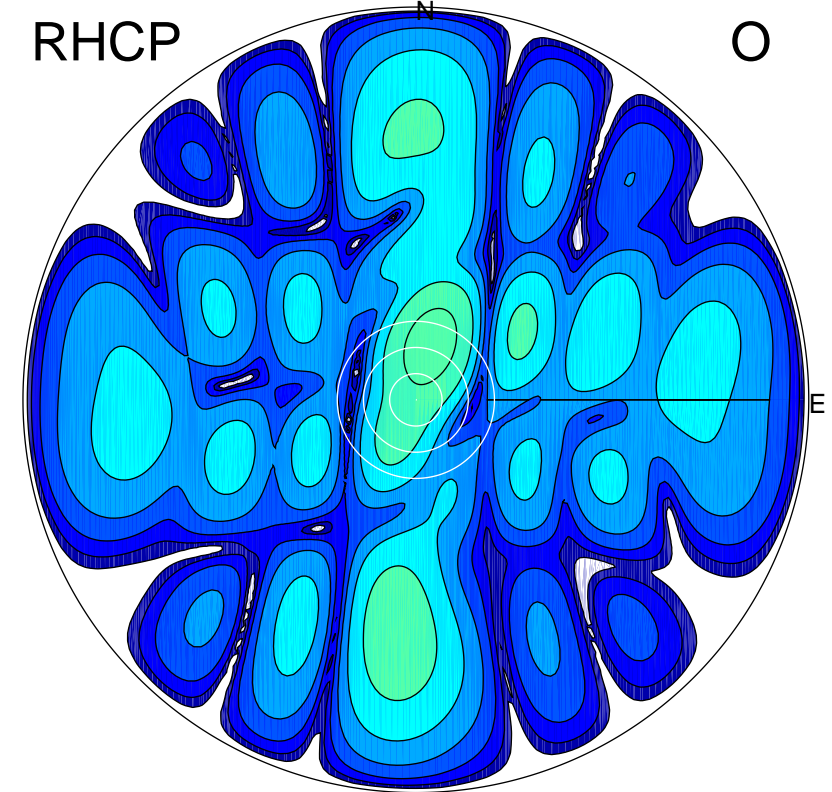
LHCP

X



RHCP

O



ERP 3.3 MW

Peak gain 19.8 dBi at Az 355 Zen 1
RHCP gain -5.4 dBi
N-S peak 19.8 dBi at Zen 1.3
N-S -3 dB beamwidth 26.5 deg.

ERP 0.0 MW

Peak gain -1.6 dBi at Az 15 Zen 13
LHCP gain 17.0 dBi
N-S peak -2.4 dBi at Zen 11.4
N-S -3 dB beamwidth 18.7 deg.