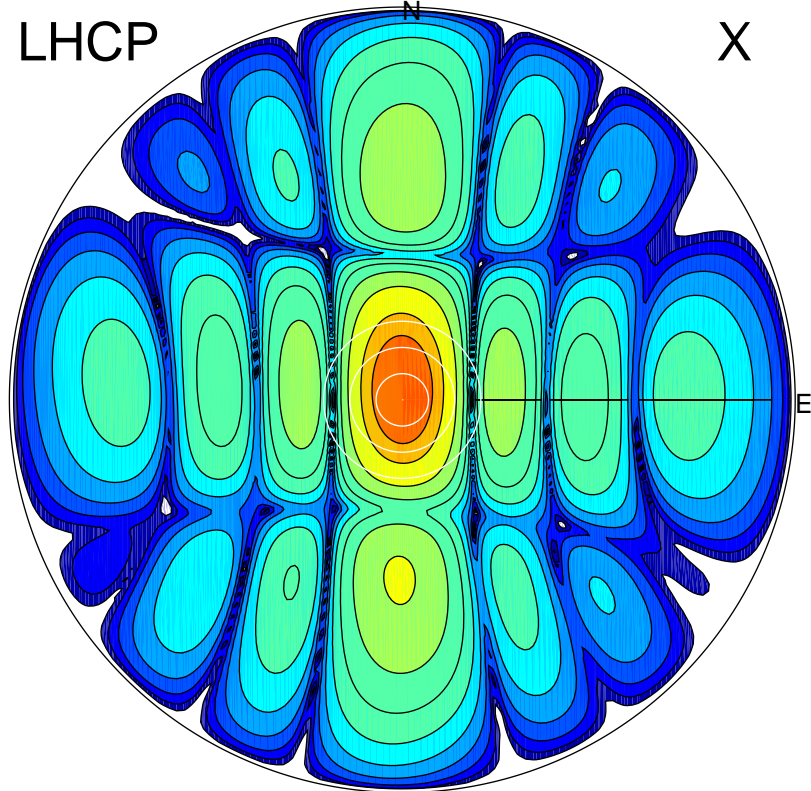


2017-11-24 11:36:00 A2 4.04000000 MHz 28.0 kW

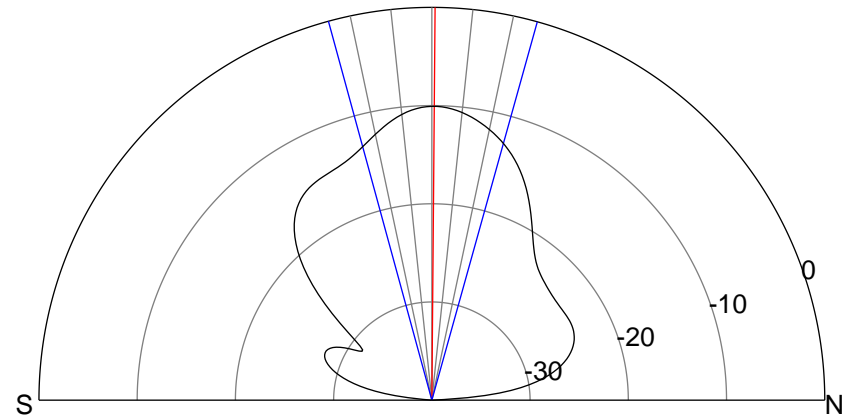
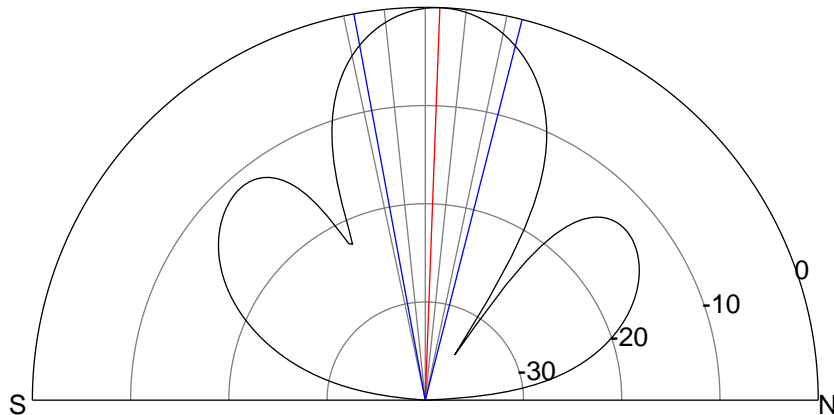
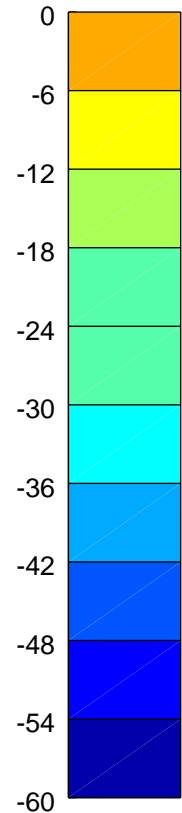
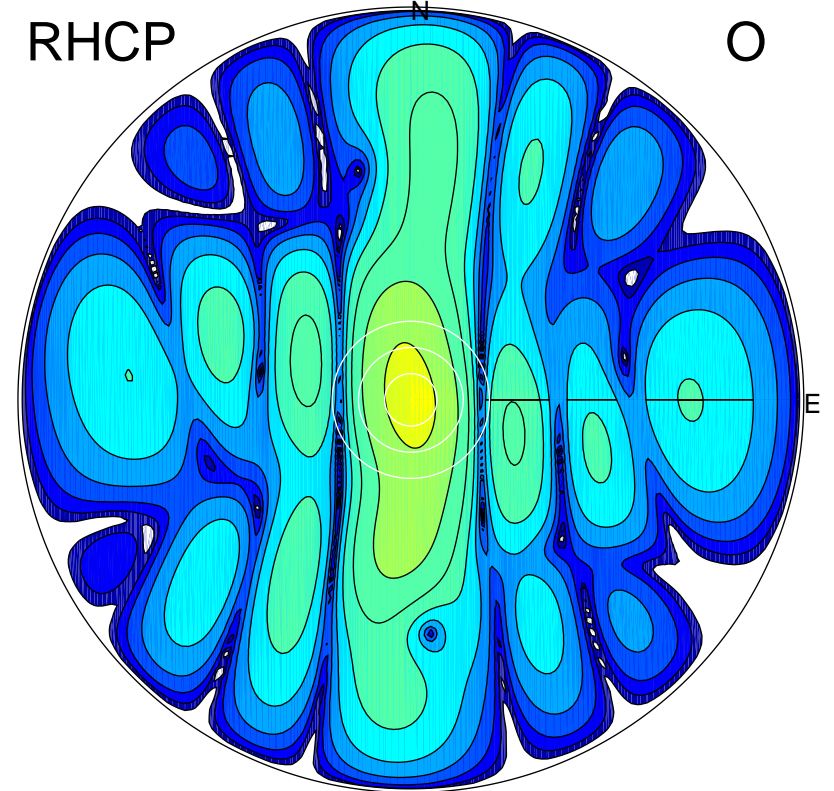
LHCP

X



RHCP

O



ERP 2.3 MW

Peak gain 19.2 dBi at Az 0 Zen 2
RHCP gain 9.1 dBi
N-S peak 19.2 dBi at Zen 2.1
N-S -3 dB beamwidth 24.7 deg.

ERP 0.2 MW

Peak gain 9.1 dBi at Az 338 Zen 1
LHCP gain 19.2 dBi
N-S peak 9.1 dBi at Zen 0.5
N-S -3 dB beamwidth 30.8 deg.