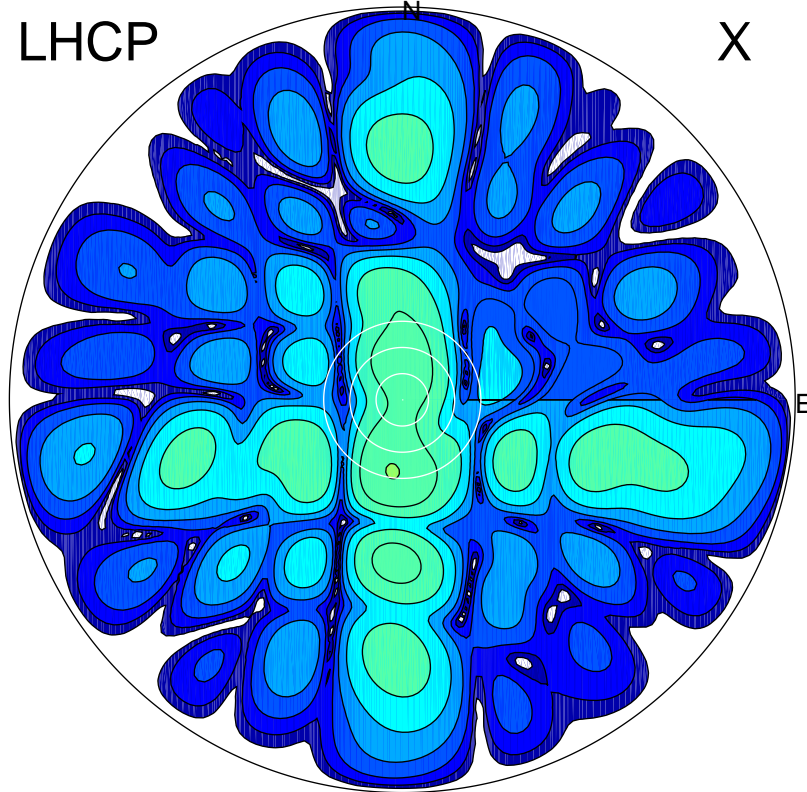


2017-11-21 11:17:00 A2 4.54400000 MHz 63.0 kW

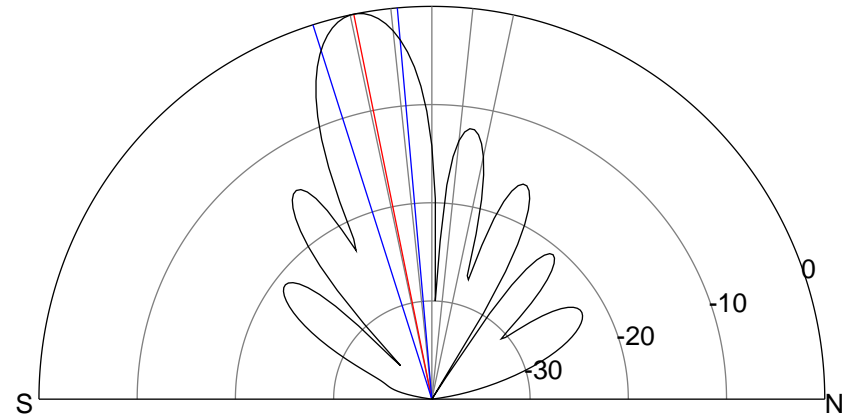
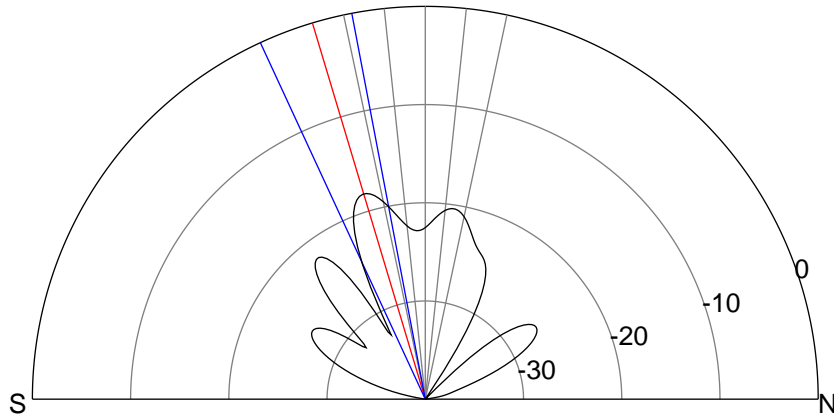
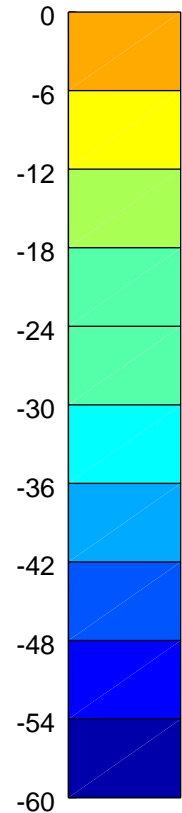
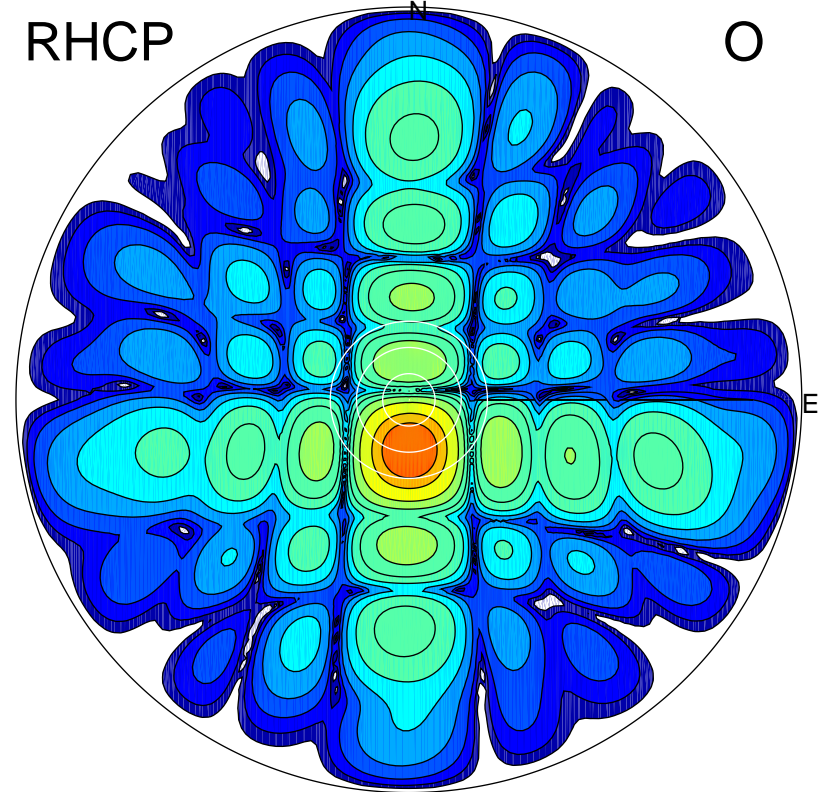
LHCP

X



RHCP

O



ERP 0.2 MW

Peak gain 5.2 dBi at Az 188 Zen 17
RHCP gain 20.6 dBi
N-S peak 4.9 dBi at Zen -16.7
N-S -3 dB beamwidth 14.0 deg.

ERP 12.7 MW

Peak gain 23.0 dBi at Az 178 Zen 11
LHCP gain 2.9 dBi
N-S peak 23.1 dBi at Zen -11.5
N-S -3 dB beamwidth 12.6 deg.