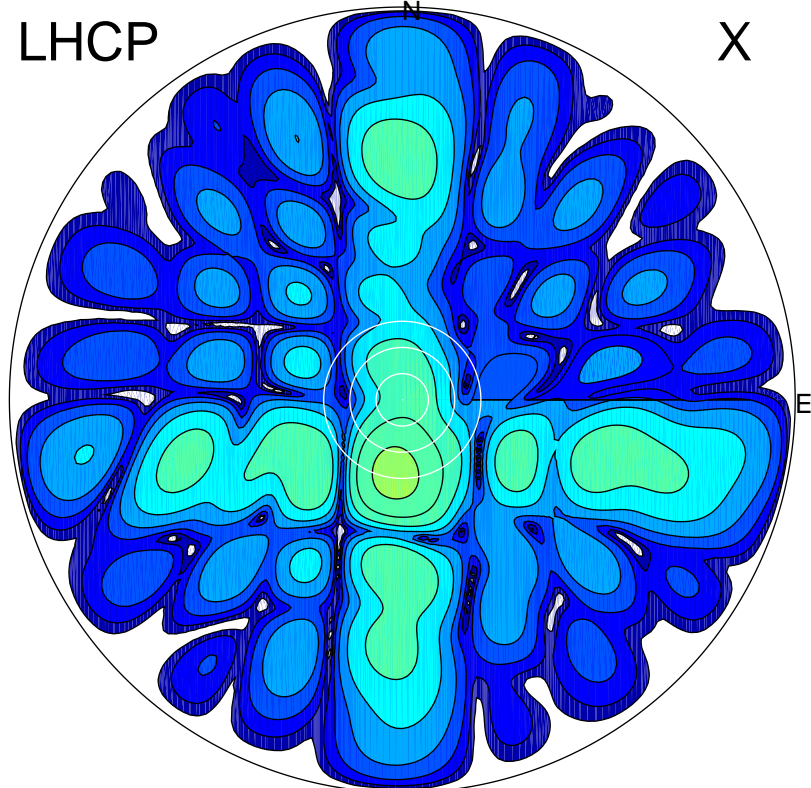


2017-11-21 11:15:00 A2 4.54400000 MHz 230.0 kW

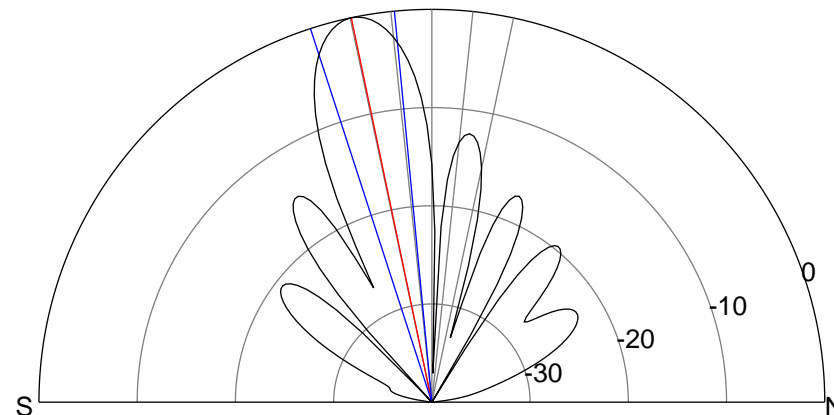
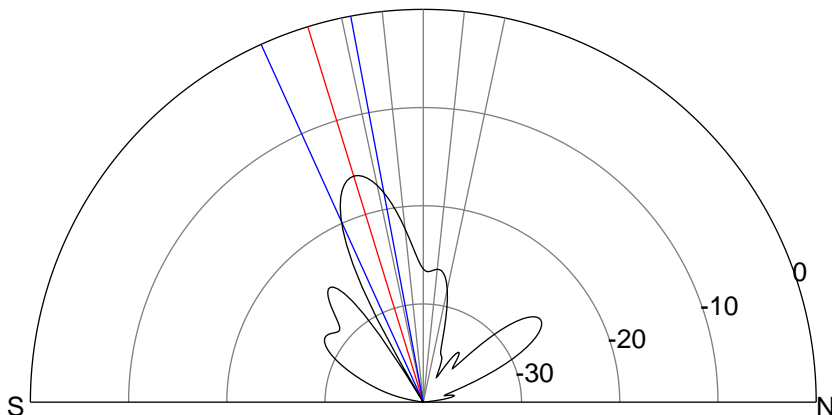
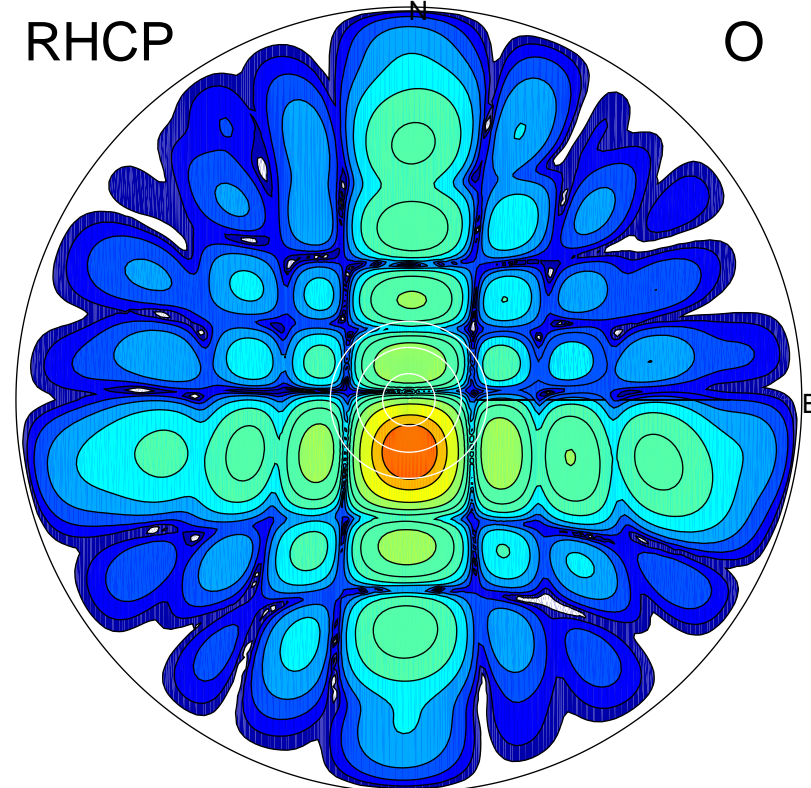
LHCP

X



RHCP

O



ERP 1.3 MW

Peak gain 7.4 dBi at Az 186 Zen 17
RHCP gain 21.0 dBi
N-S peak 7.2 dBi at Zen -17.1
N-S -3 dB beamwidth 13.7 deg.

ERP 46.9 MW

Peak gain 23.1 dBi at Az 179 Zen 12
LHCP gain 5.6 dBi
N-S peak 23.1 dBi at Zen -11.8
N-S -3 dB beamwidth 12.5 deg.