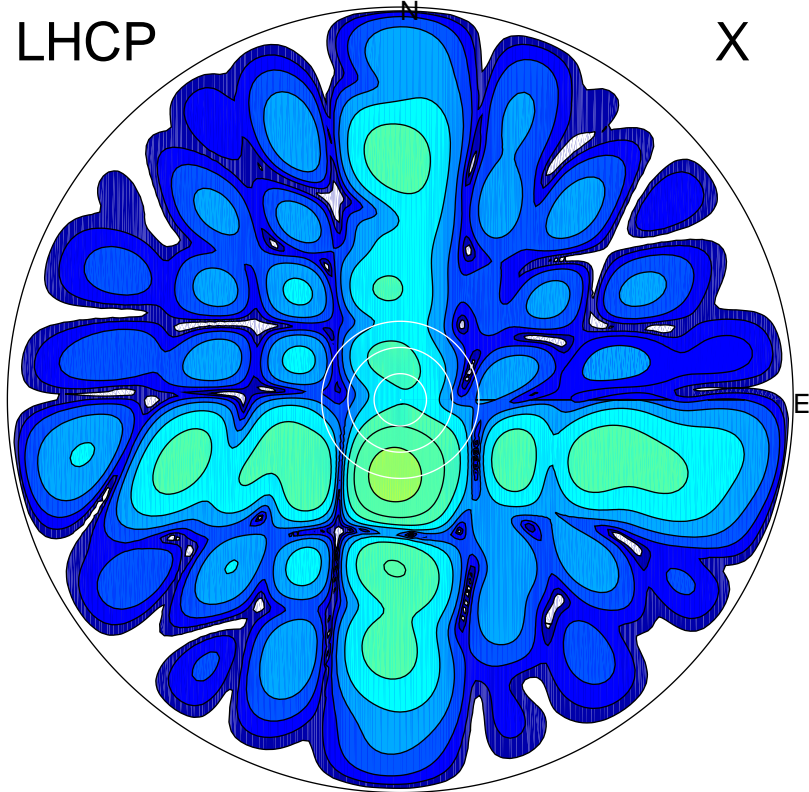


2017-11-21 11:13:00 A2 4.54400000 MHz 407.0 kW

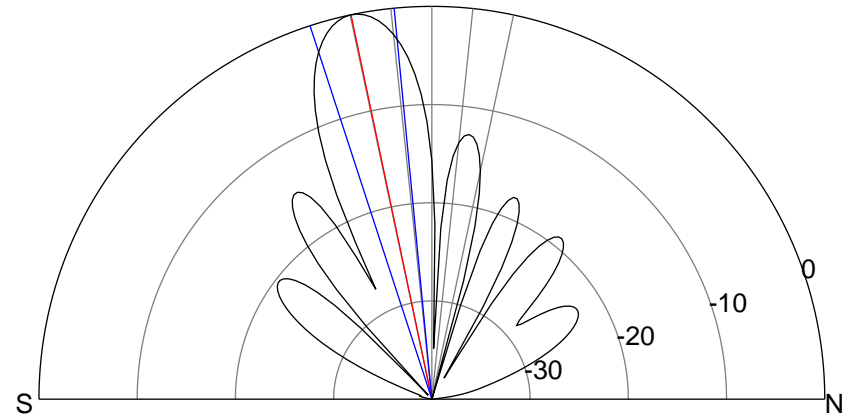
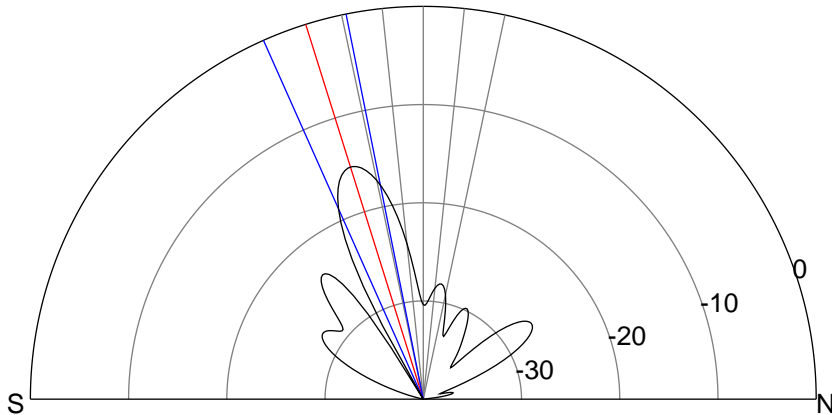
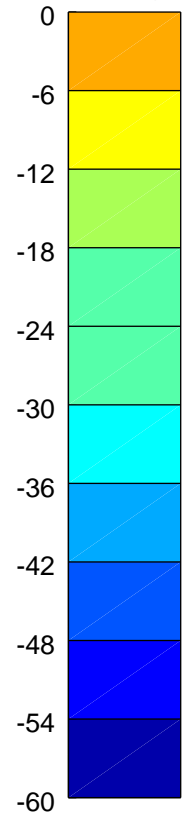
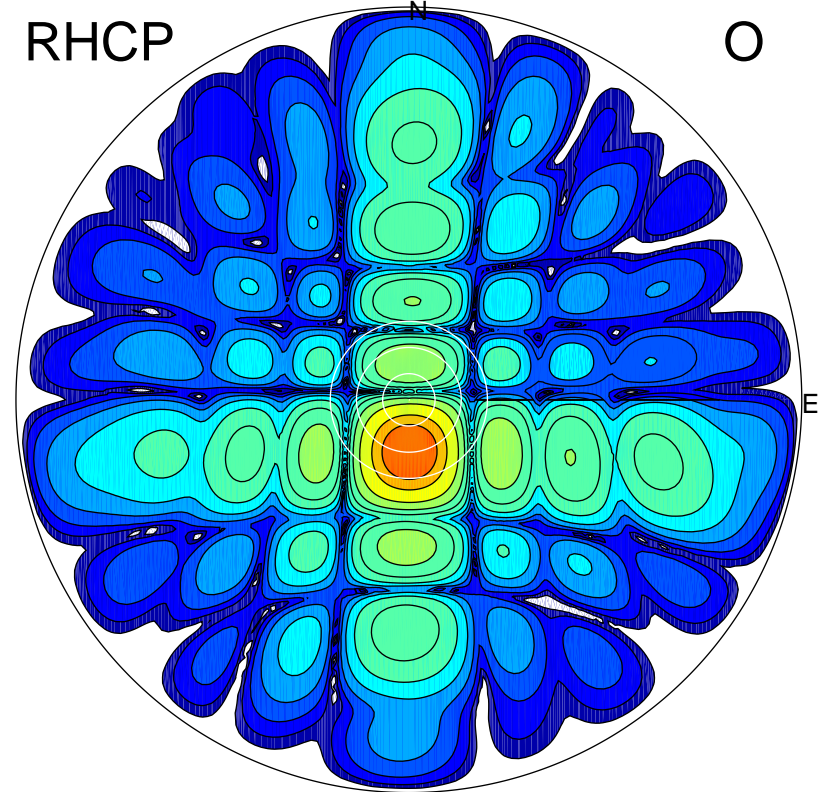
LHCP

X



RHCP

O



ERP 2.6 MW

Peak gain 8.0 dBi at Az 185 Zen 17
RHCP gain 21.0 dBi
N-S peak 7.9 dBi at Zen -17.4
N-S -3 dB beamwidth 12.7 deg.

ERP 82.9 MW

Peak gain 23.1 dBi at Az 179 Zen 12
LHCP gain 5.8 dBi
N-S peak 23.1 dBi at Zen -11.9
N-S -3 dB beamwidth 12.6 deg.