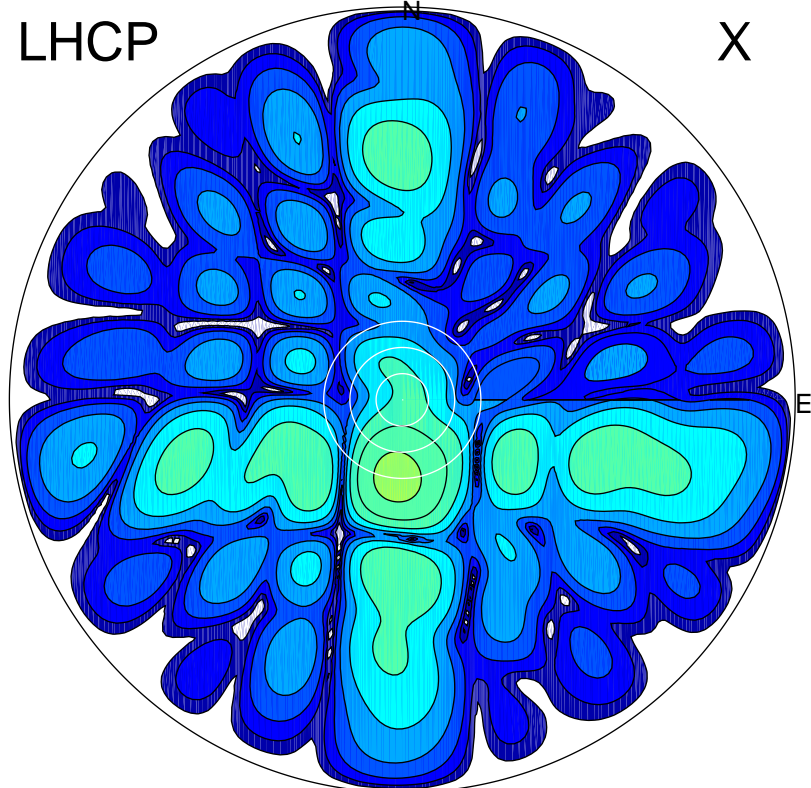


2017-11-21 11:11:00 A2 4.54400000 MHz 731.0 kW

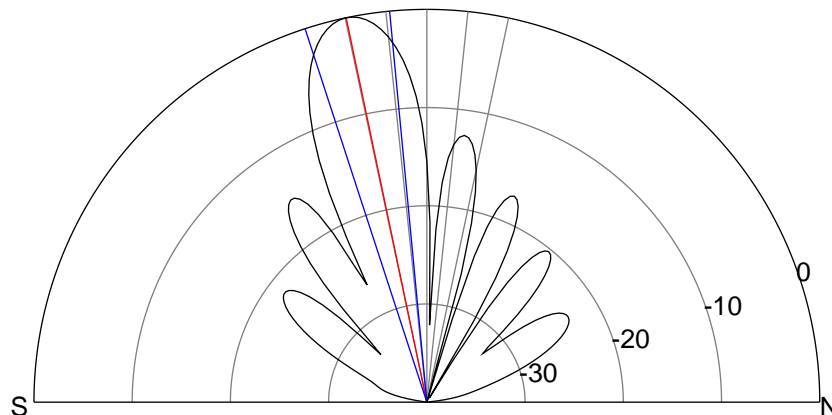
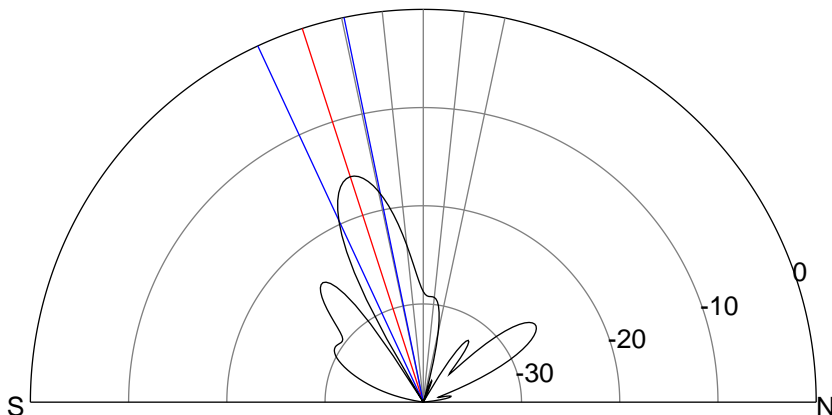
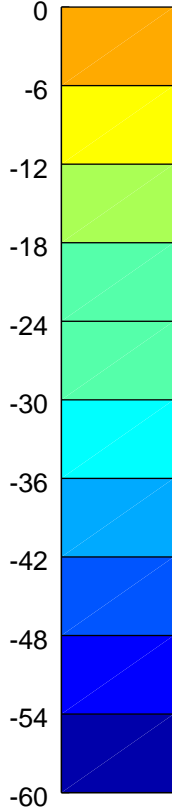
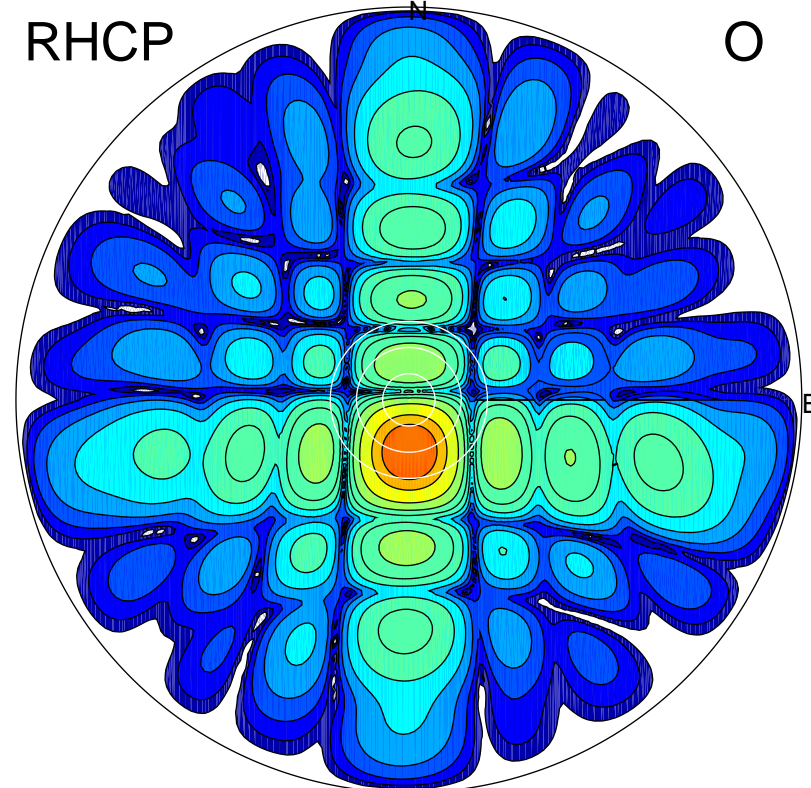
LHCP

X



RHCP

O



ERP 4.0 MW

Peak gain 7.4 dBi at Az 185 Zen 18
RHCP gain 20.2 dBi
N-S peak 7.2 dBi at Zen -17.9
N-S -3 dB beamwidth 13.3 deg.

ERP 149.0 MW

Peak gain 23.1 dBi at Az 178 Zen 12
LHCP gain 4.9 dBi
N-S peak 23.1 dBi at Zen -11.8
N-S -3 dB beamwidth 12.6 deg.