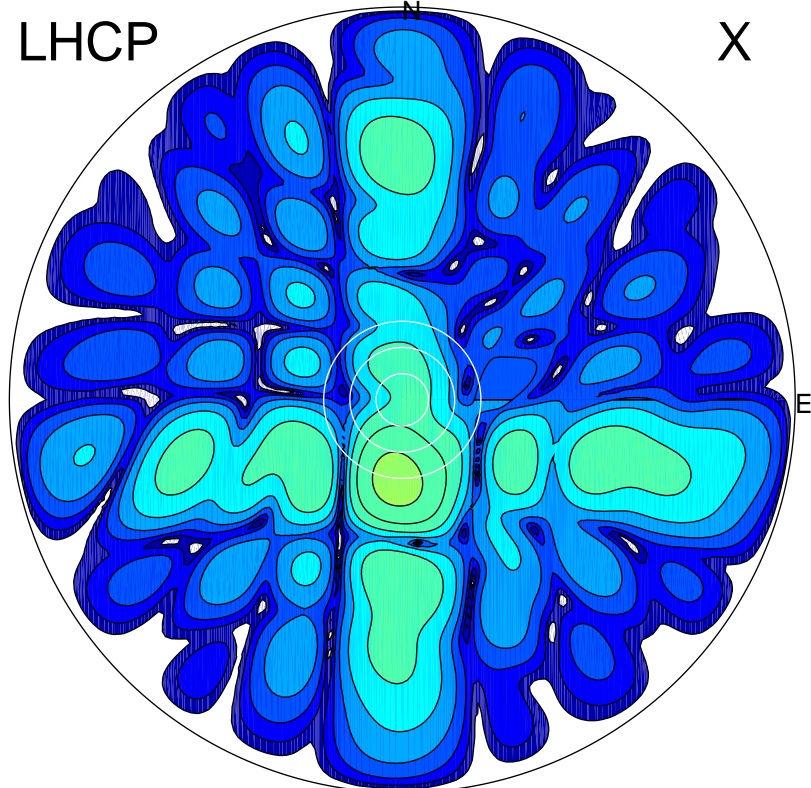


2017-11-21 11:09:00 A2 4.54400000 MHz 881.0 kW

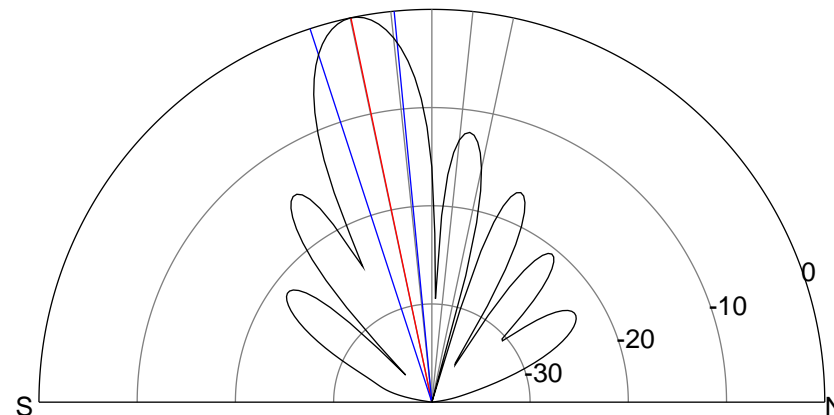
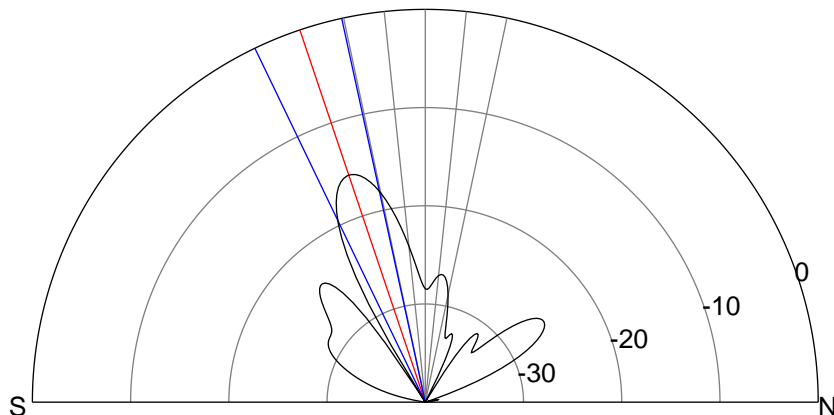
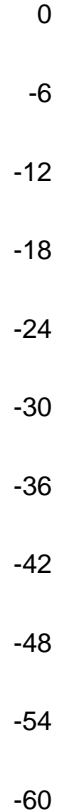
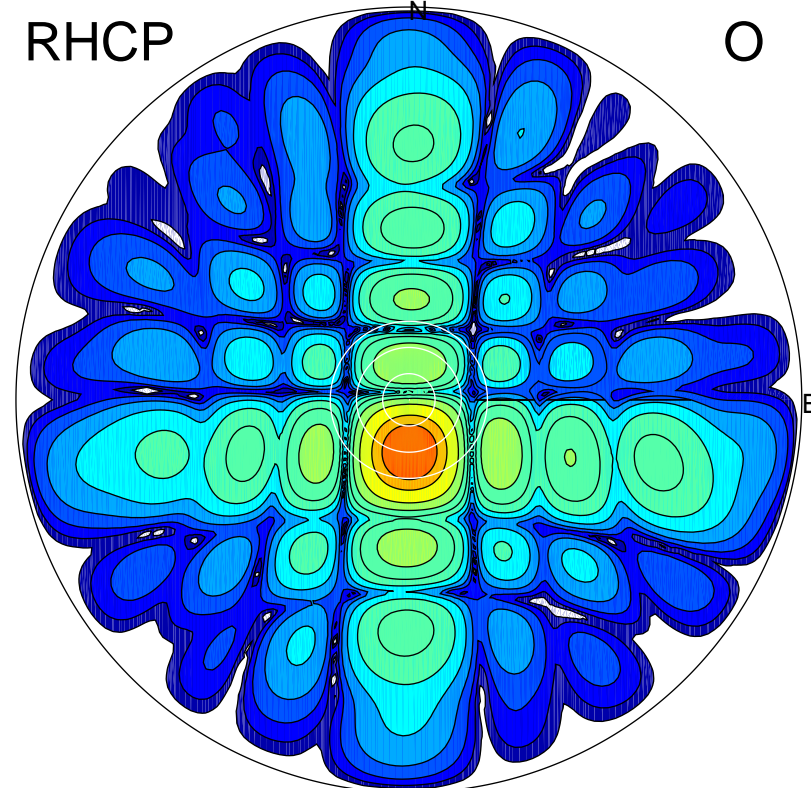
LHCP

X



RHCP

O



ERP 5.1 MW

Peak gain 7.6 dBi at Az 184 Zen 18
RHCP gain 20.3 dBi
N-S peak 7.5 dBi at Zen -18.6
N-S -3 dB beamwidth 13.4 deg.

ERP 178.9 MW

Peak gain 23.1 dBi at Az 179 Zen 12
LHCP gain 4.8 dBi
N-S peak 23.1 dBi at Zen -11.9
N-S -3 dB beamwidth 12.6 deg.