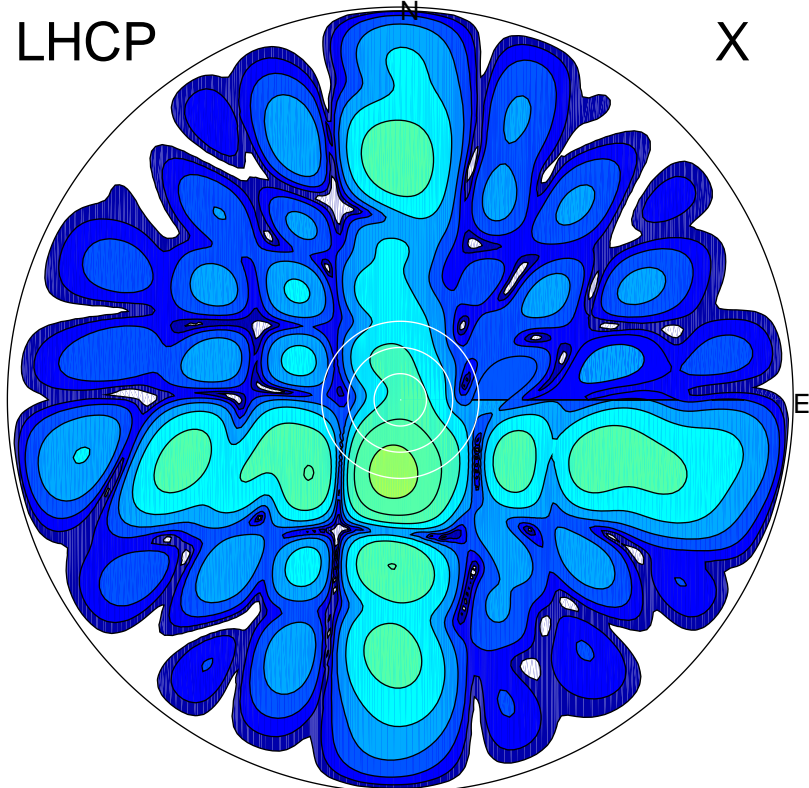


2017-11-21 11:07:00 A2 4.54400000 MHz 739.0 kW

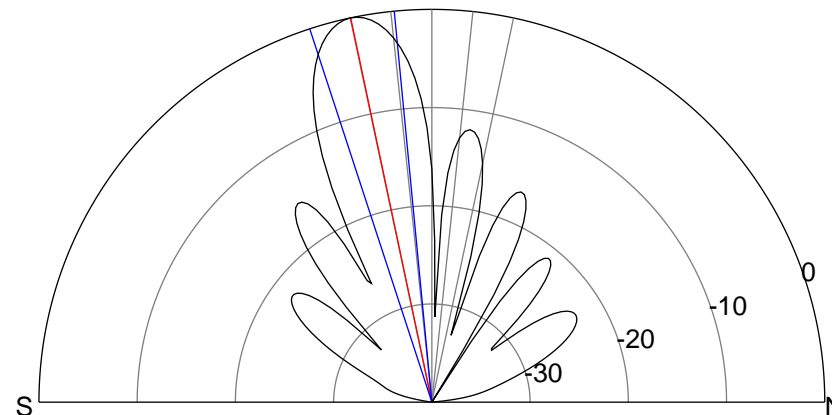
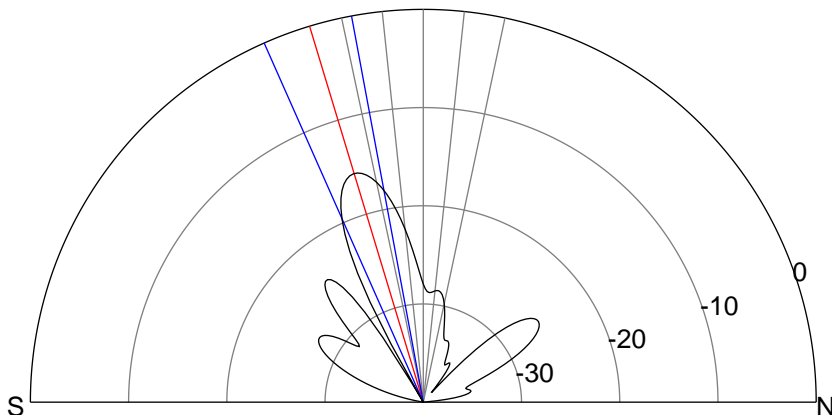
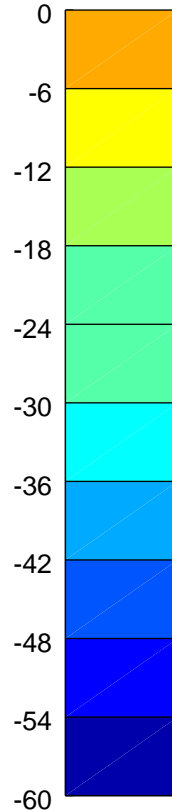
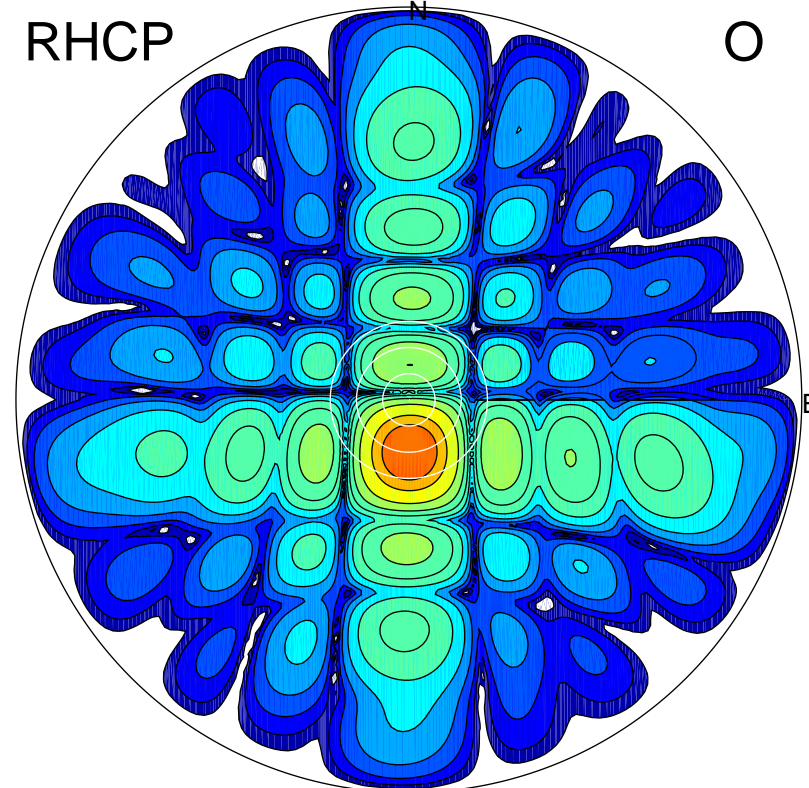
LHCP

X



RHCP

O



### ERP 4.3 MW

Peak gain 7.7 dBi at Az 186 Zen 17  
RHCP gain 21.1 dBi  
N-S peak 7.4 dBi at Zen -16.8  
N-S -3 dB beamwidth 13.4 deg.

### ERP 150.1 MW

Peak gain 23.1 dBi at Az 179 Zen 12  
LHCP gain 5.9 dBi  
N-S peak 23.1 dBi at Zen -11.9  
N-S -3 dB beamwidth 12.6 deg.