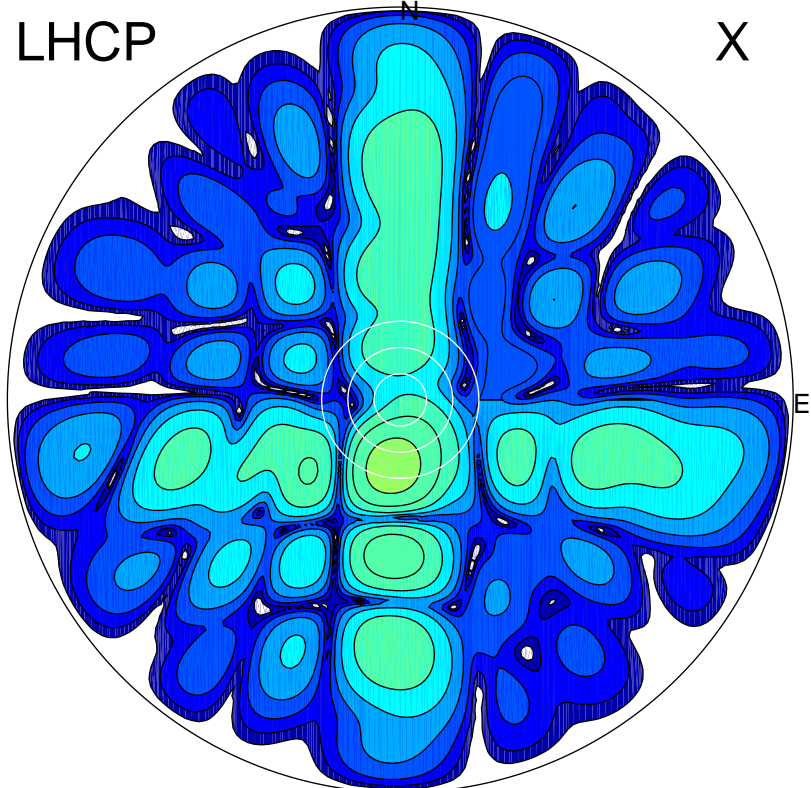


2017-11-21 11:03:00 A2 4.54400000 MHz 253.0 kW

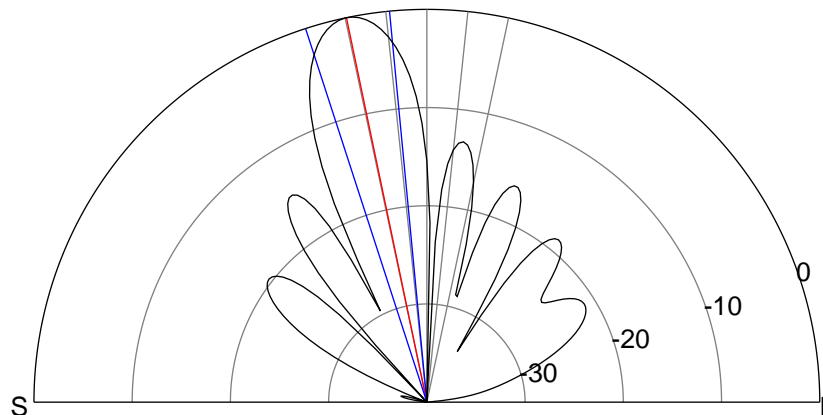
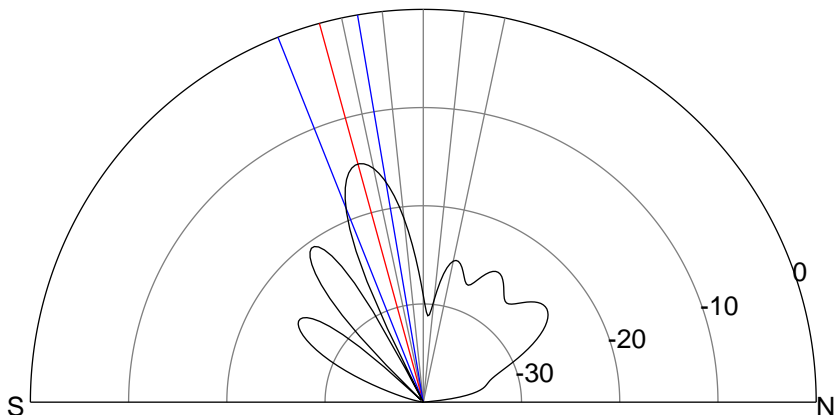
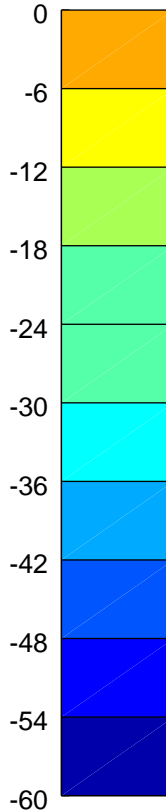
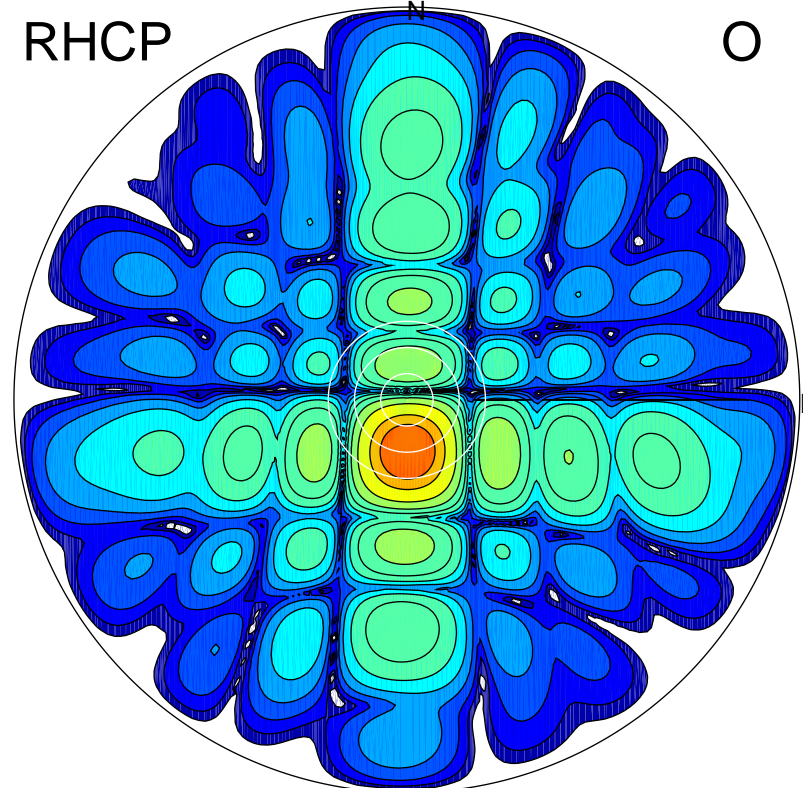
LHCP

X



RHCP

O



ERP 1.8 MW

Peak gain 8.5 dBi at Az 187 Zen 16
RHCP gain 21.5 dBi
N-S peak 8.2 dBi at Zen -15.3
N-S -3 dB beamwidth 12.1 deg.

ERP 50.8 MW

Peak gain 23.0 dBi at Az 179 Zen 12
LHCP gain 7.3 dBi
N-S peak 23.0 dBi at Zen -11.8
N-S -3 dB beamwidth 12.5 deg.