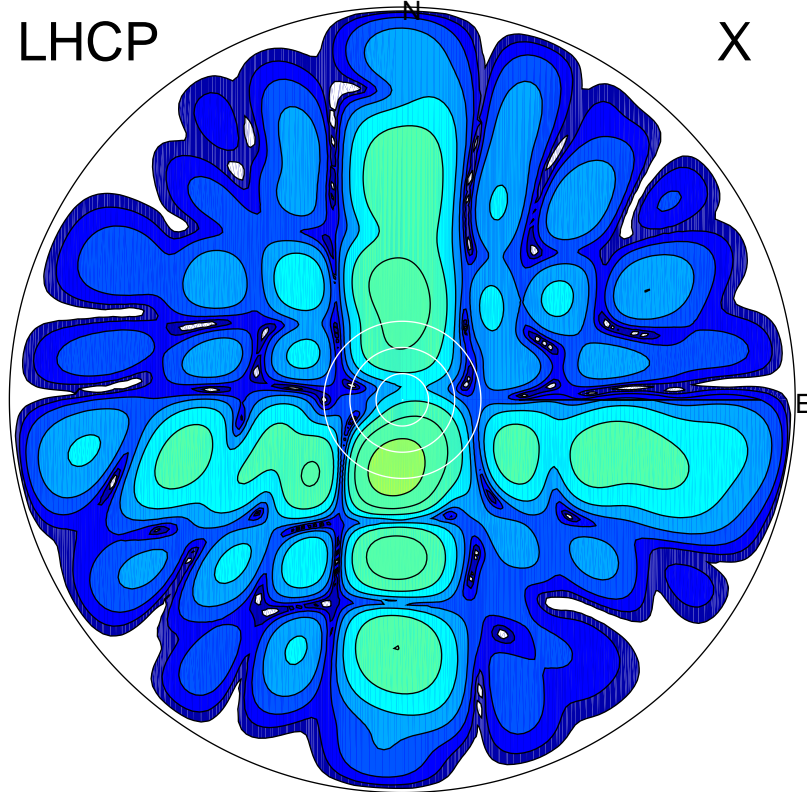


2017-11-21 11:01:00 A2 4.54400000 MHz 69.0 kW

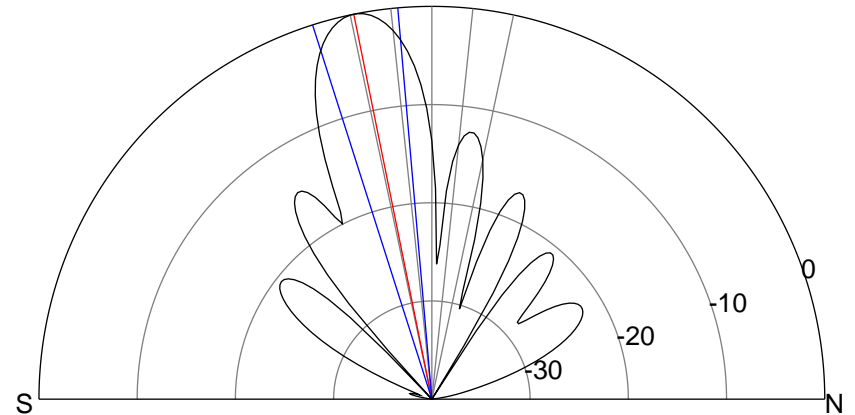
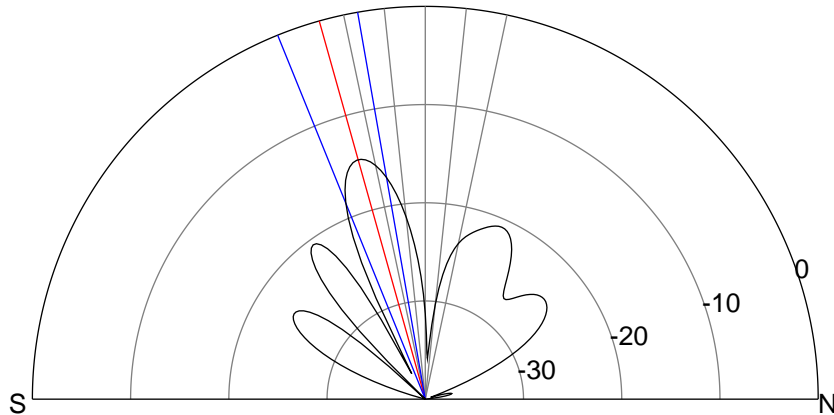
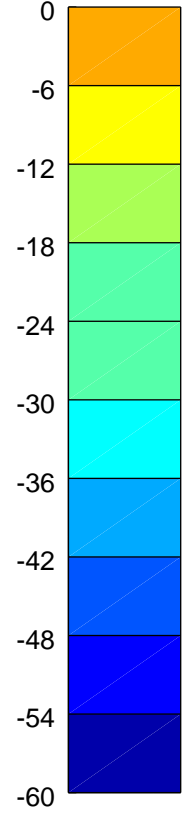
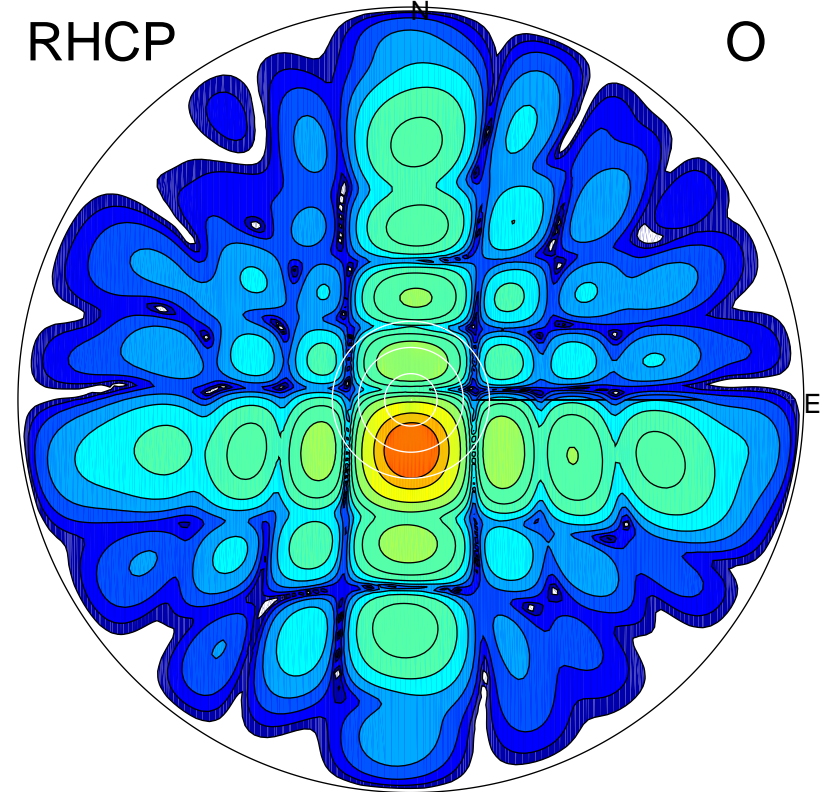
LHCP

X



RHCP

O



ERP 0.5 MW

Peak gain 8.5 dBi at Az 186 Zen 16
RHCP gain 21.3 dBi
N-S peak 8.3 dBi at Zen -15.7
N-S -3 dB beamwidth 12.2 deg.

ERP 13.6 MW

Peak gain 22.9 dBi at Az 179 Zen 11
LHCP gain 6.6 dBi
N-S peak 22.9 dBi at Zen -11.5
N-S -3 dB beamwidth 12.7 deg.