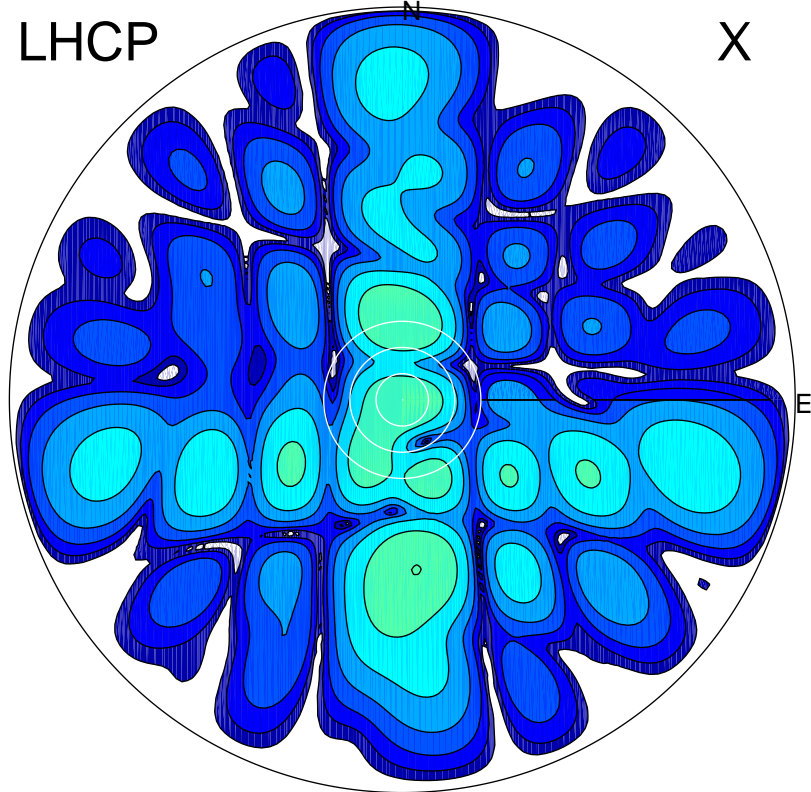


2017-11-14 11:21:00 A2 4.04000000 MHz 812.0 kW

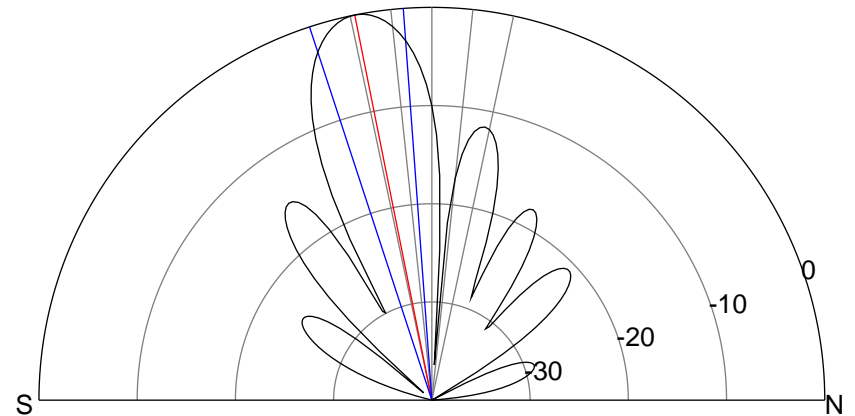
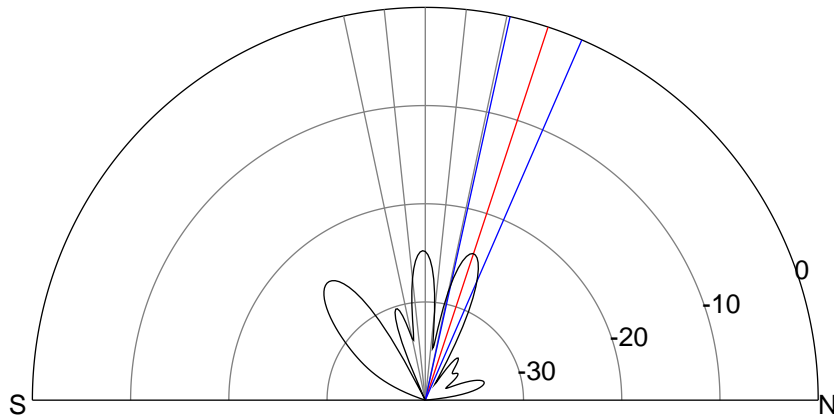
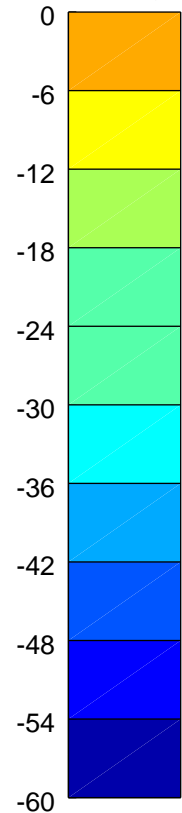
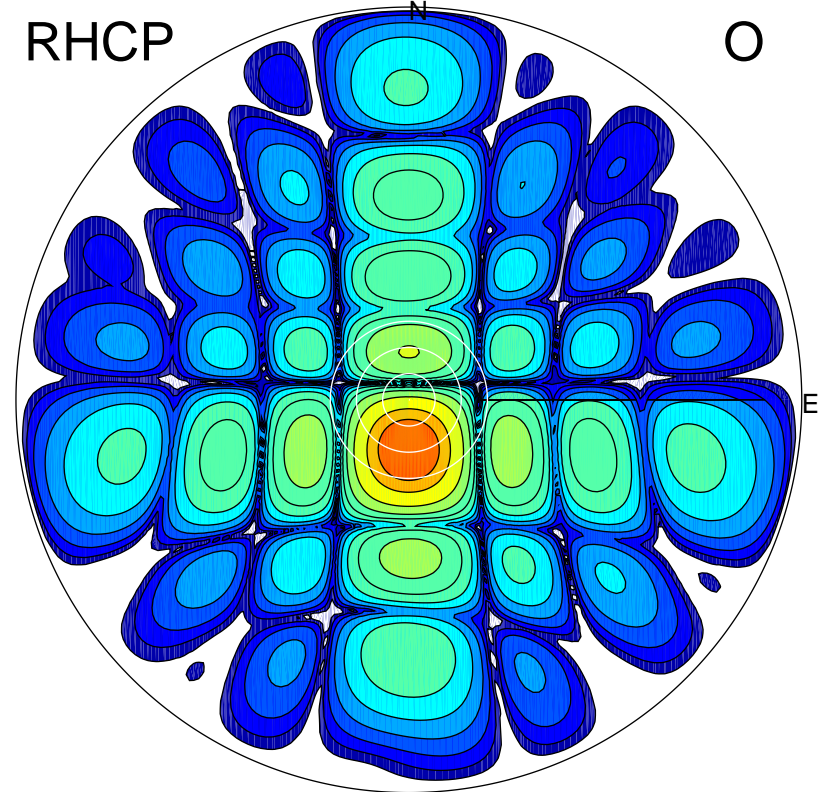
LHCP

X



RHCP

O



### ERP 0.6 MW

Peak gain -1.6 dBi at Az 175 Zen 39  
RHCP gain 5.8 dBi  
N-S peak -1.9 dBi at Zen 18.2  
N-S -3 dB beamwidth 11.0 deg.

### ERP 140.0 MW

Peak gain 22.4 dBi at Az 179 Zen 11  
LHCP gain -11.8 dBi  
N-S peak 22.4 dBi at Zen -11.3  
N-S -3 dB beamwidth 14.0 deg.