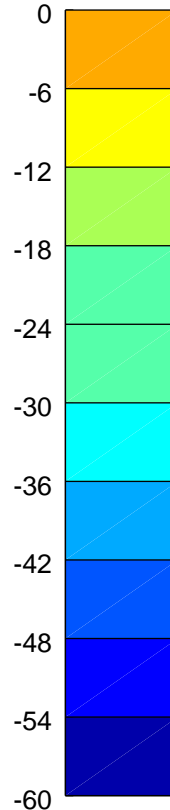
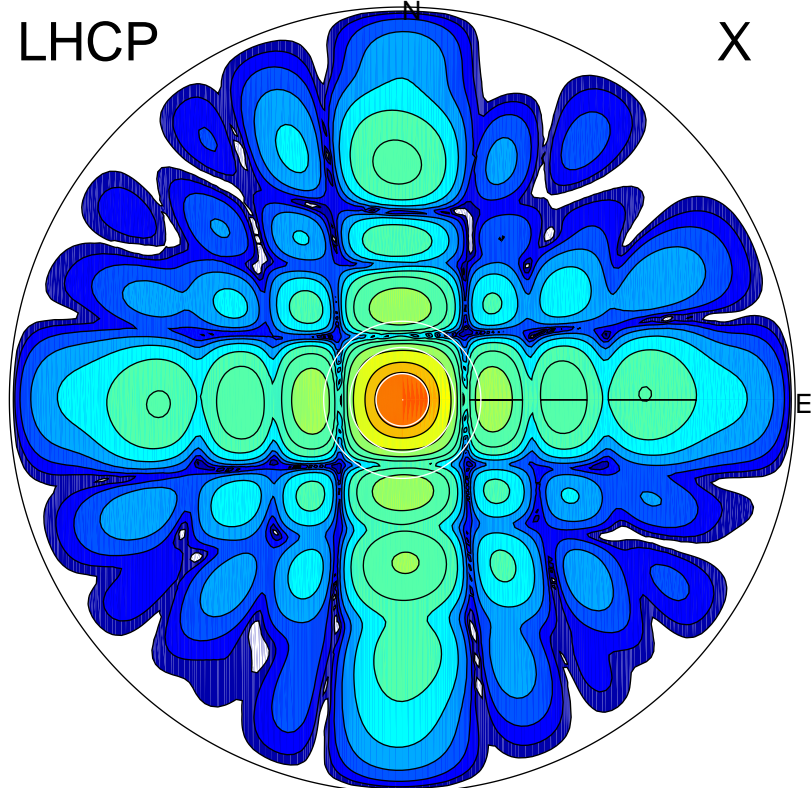


2017-11-13 13:24:00 A2 4.54400000 MHz 822.0 kW

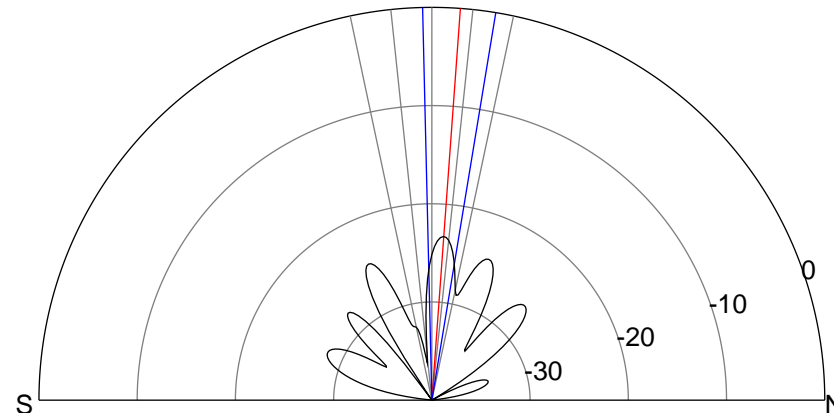
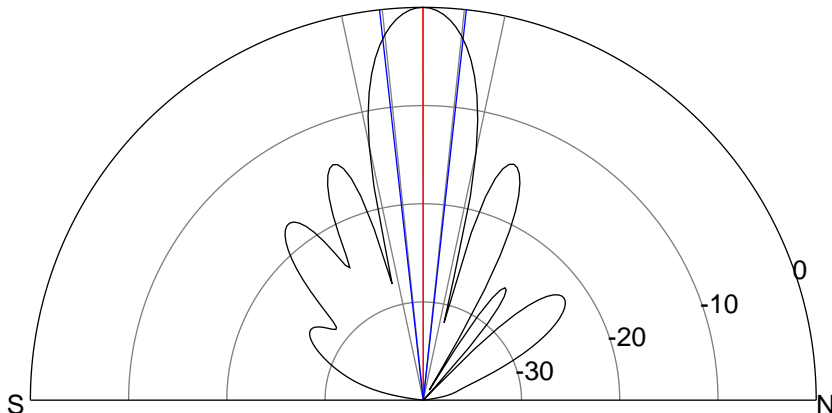
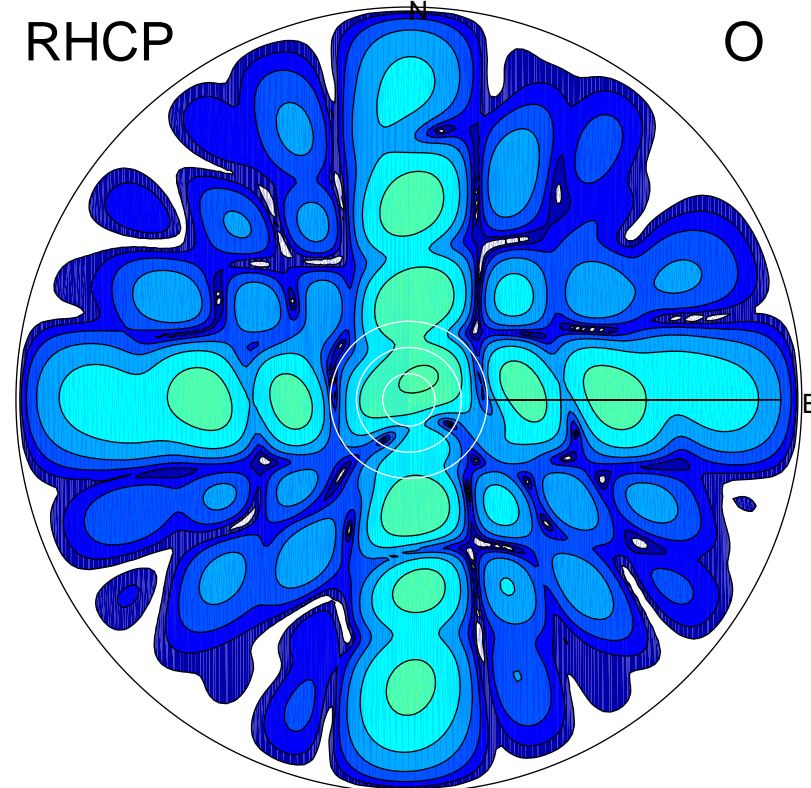
LHCP

X



RHCP

O



ERP 171.8 MW

Peak gain 23.2 dBi at Az 55 Zen 0

RHCP gain -2.0 dBi

N-S peak 23.2 dBi at Zen -0.1

N-S -3 dB beamwidth 12.7 deg.

ERP 0.9 MW

Peak gain 0.2 dBi at Az 25 Zen 5

LHCP gain 21.4 dBi

N-S peak -0.1 dBi at Zen 4.2

N-S -3 dB beamwidth 10.7 deg.