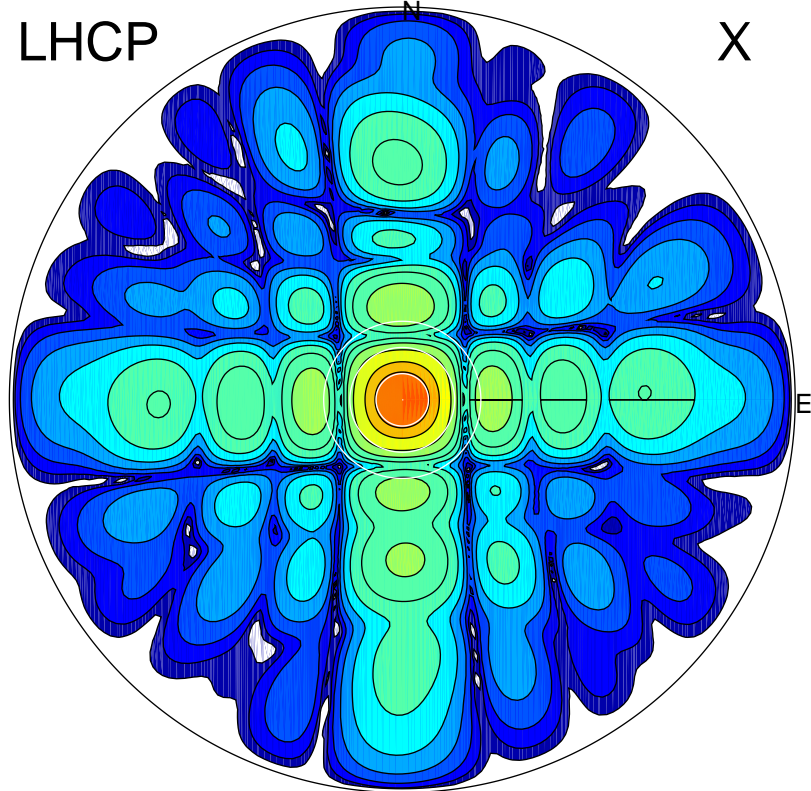


2017-11-13 13:20:00 A2 4.54400000 MHz 542.0 kW

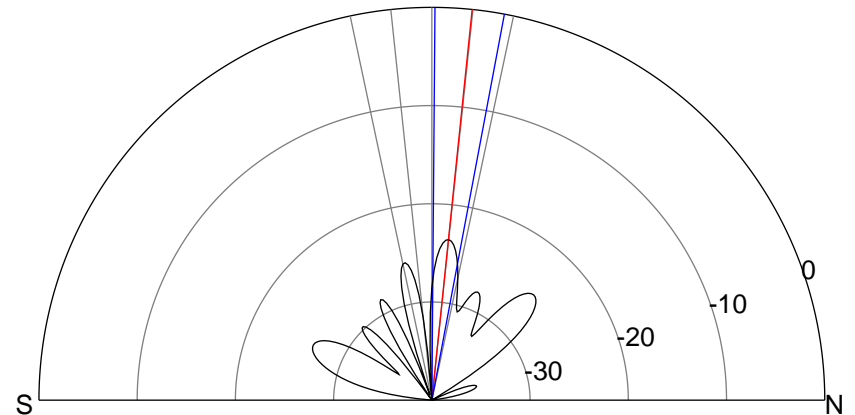
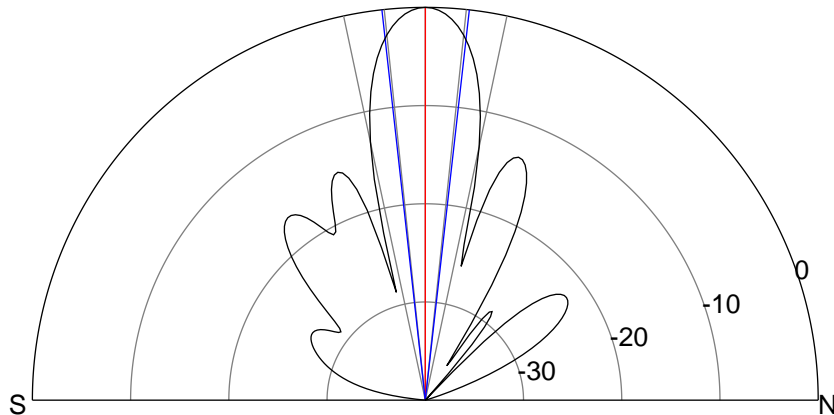
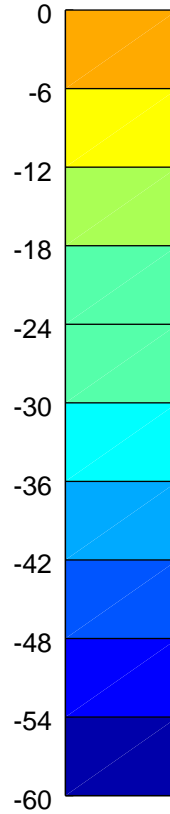
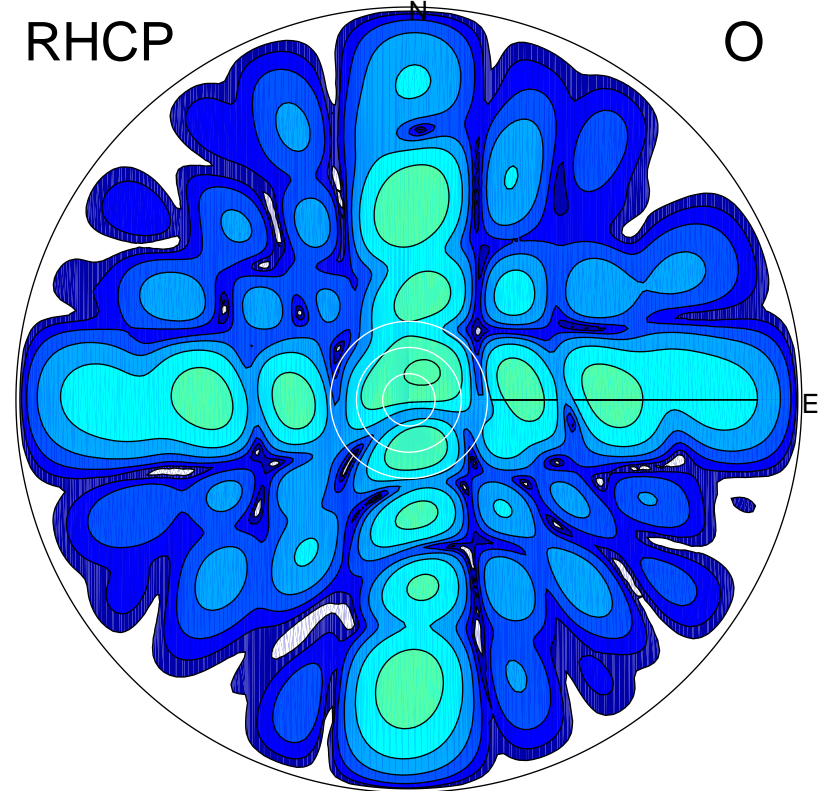
LHCP

X



RHCP

O



ERP 111.9 MW

Peak gain 23.1 dBi at Az 21 Zen 0
RHCP gain -5.4 dBi
N-S peak 23.1 dBi at Zen 0.0
N-S -3 dB beamwidth 12.8 deg.

ERP 0.6 MW

Peak gain 0.2 dBi at Az 28 Zen 7
LHCP gain 19.6 dBi
N-S peak -0.4 dBi at Zen 5.9
N-S -3 dB beamwidth 10.2 deg.