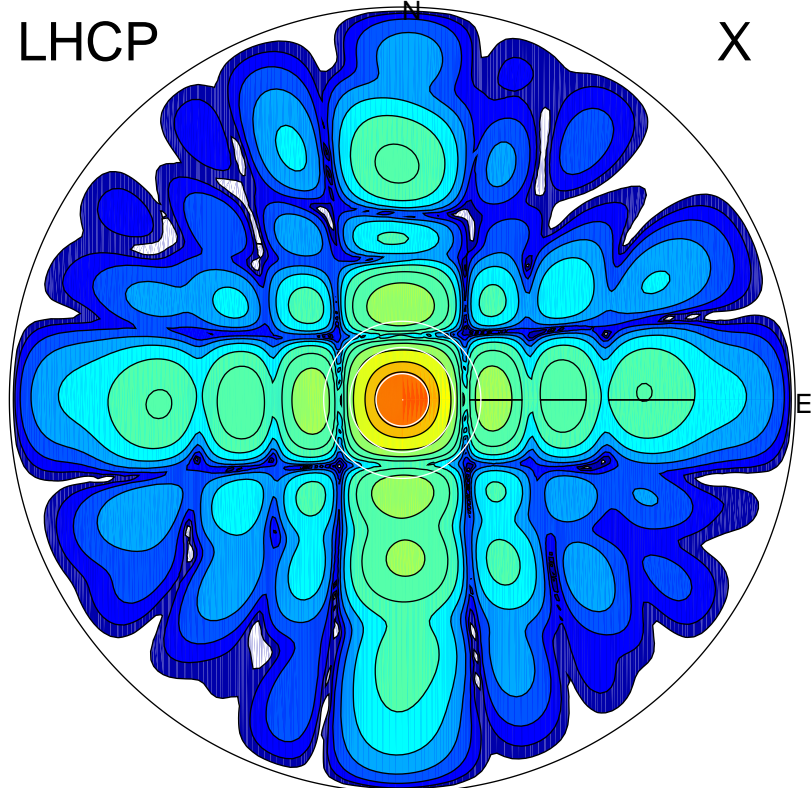


2017-11-13 13:16:00 A2 4.54400000 MHz 332.0 kW

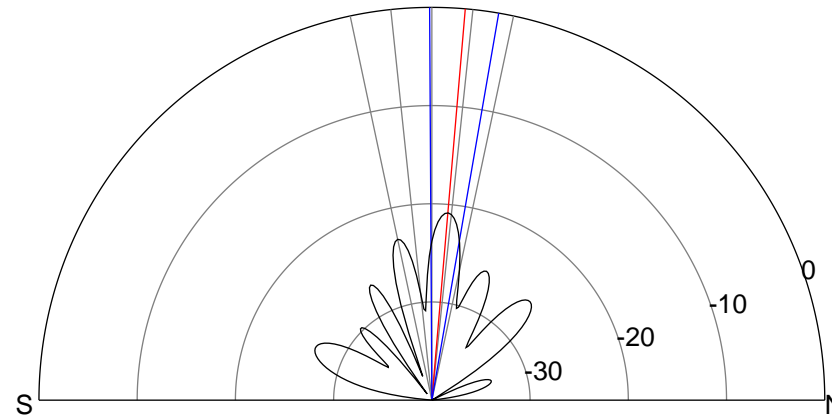
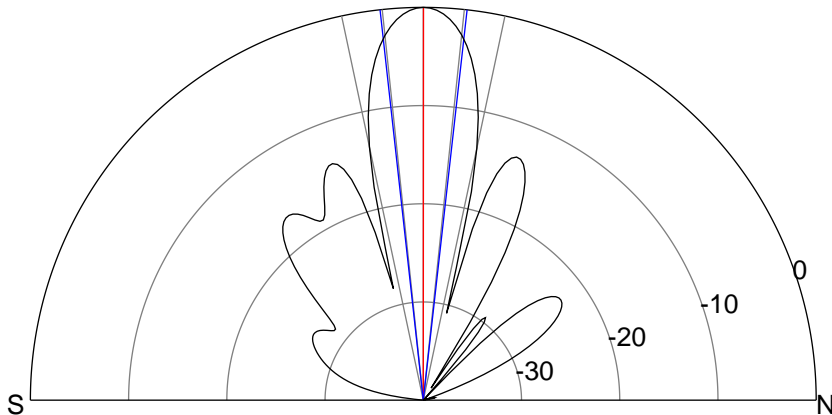
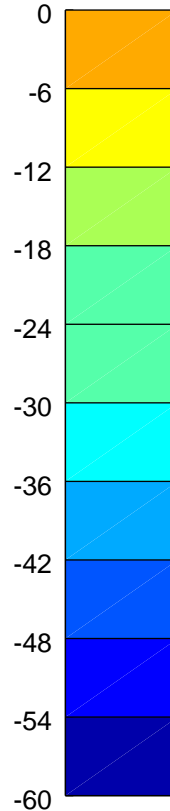
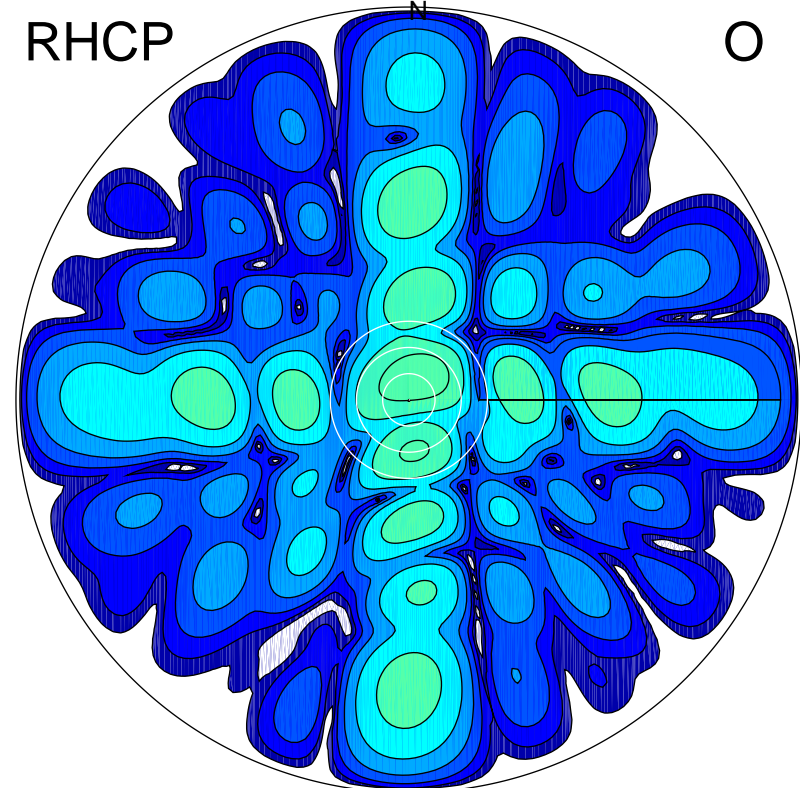
LHCP

X



RHCP

O



ERP 68.2 MW

Peak gain 23.1 dBi at Az 128 Zen 0
RHCP gain -0.7 dBi
N-S peak 23.1 dBi at Zen 0.0
N-S -3 dB beamwidth 12.7 deg.

ERP 0.6 MW

Peak gain 2.5 dBi at Az 25 Zen 6
LHCP gain 20.5 dBi
N-S peak 2.3 dBi at Zen 4.9
N-S -3 dB beamwidth 10.1 deg.