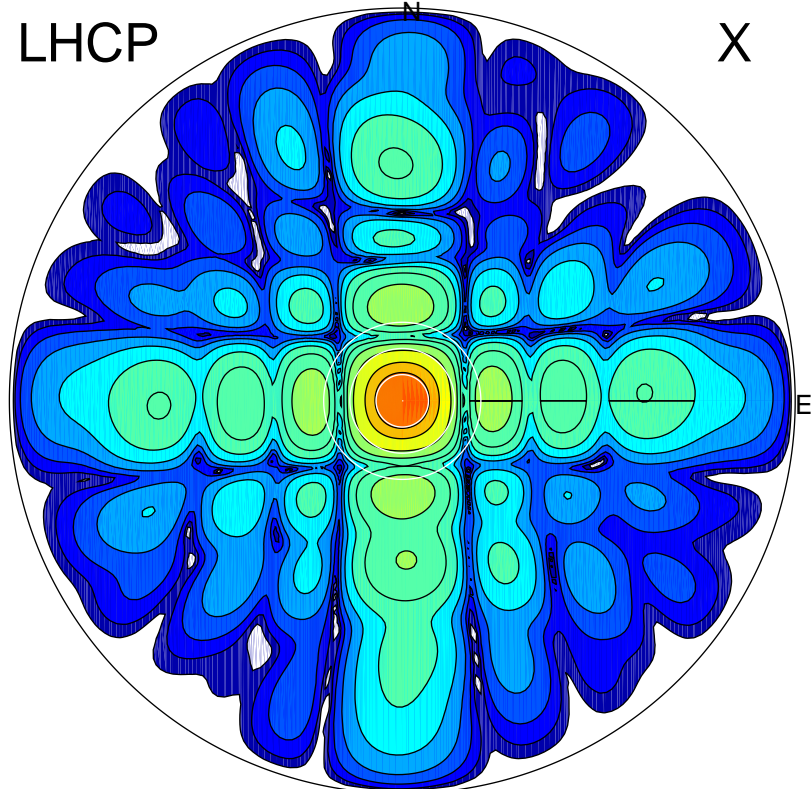


2017-11-13 13:12:00 A2 4.54400000 MHz 108.0 kW

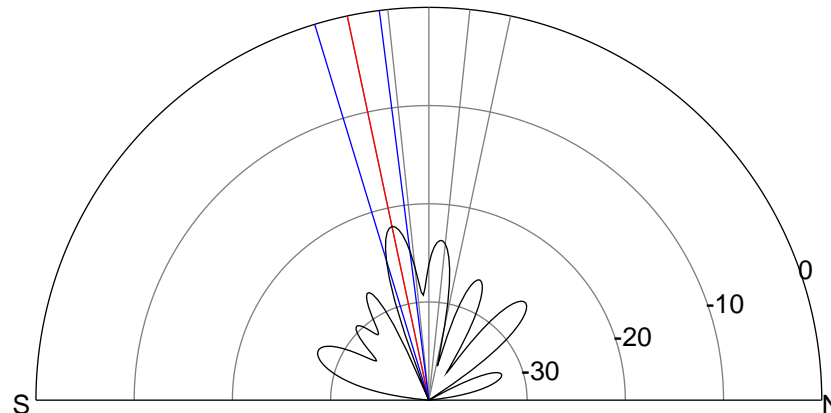
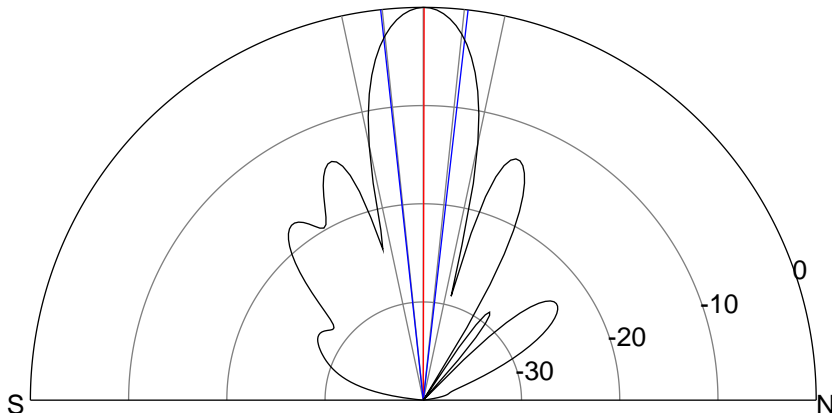
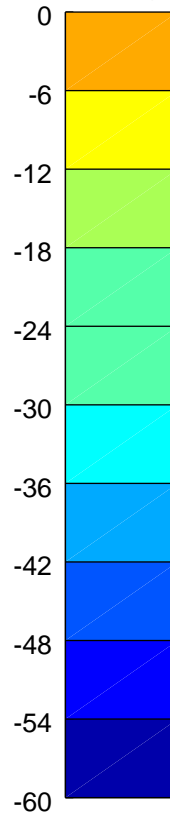
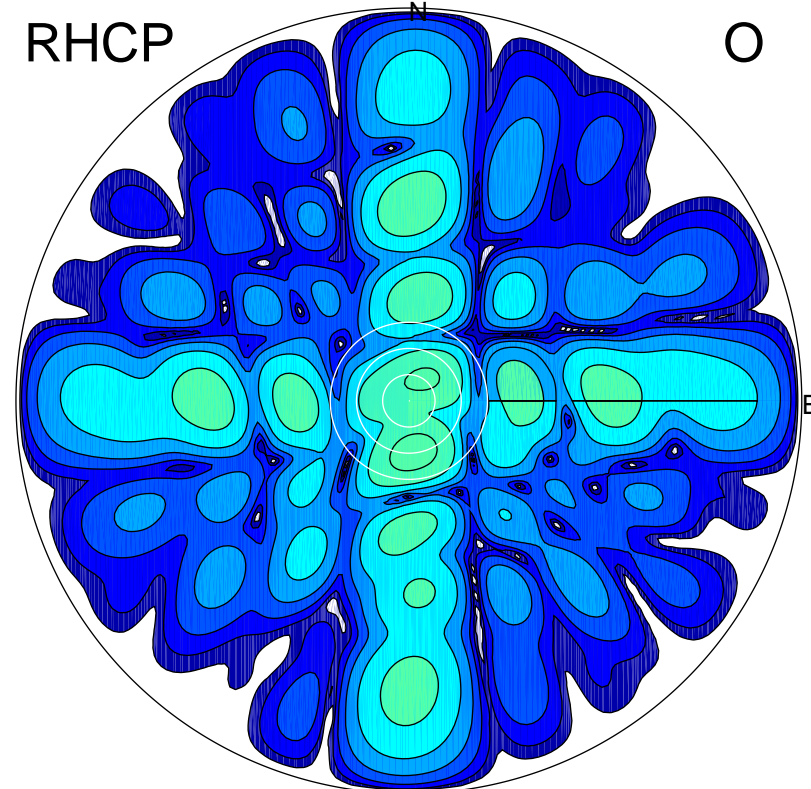
LHCP

X



RHCP

O



### ERP 22.2 MW

Peak gain 23.1 dBi at Az 17 Zen 0  
RHCP gain -3.1 dBi  
N-S peak 23.1 dBi at Zen 0.1  
N-S -3 dB beamwidth 12.8 deg.

### ERP 0.1 MW

Peak gain 1.3 dBi at Az 174 Zen 12  
LHCP gain 9.7 dBi  
N-S peak 1.2 dBi at Zen -12.0  
N-S -3 dB beamwidth 9.6 deg.