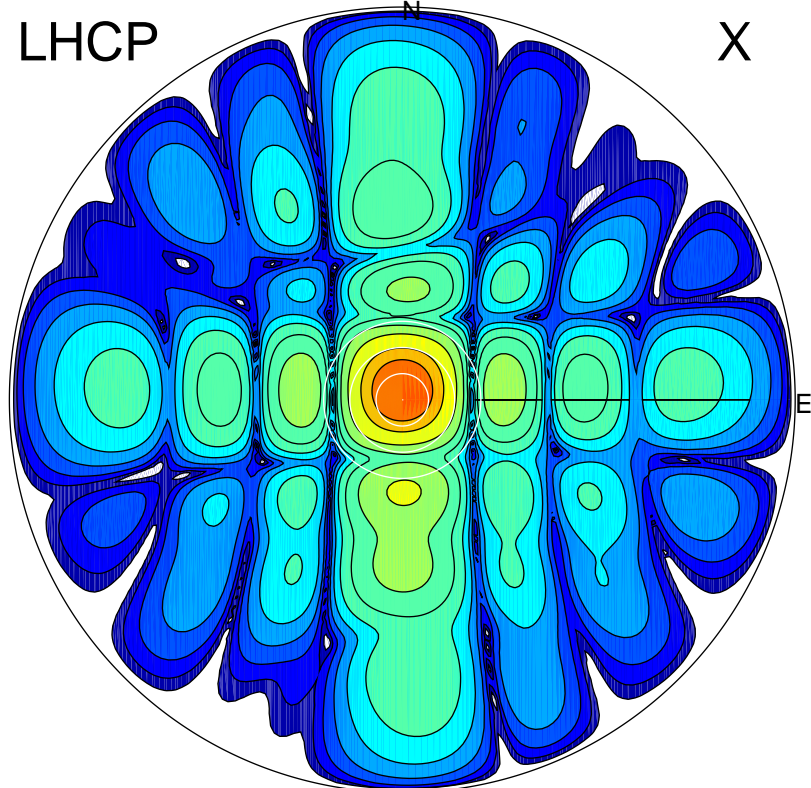


2017-11-13 12:58:10 A2 4.04000000 MHz 488.0 kW

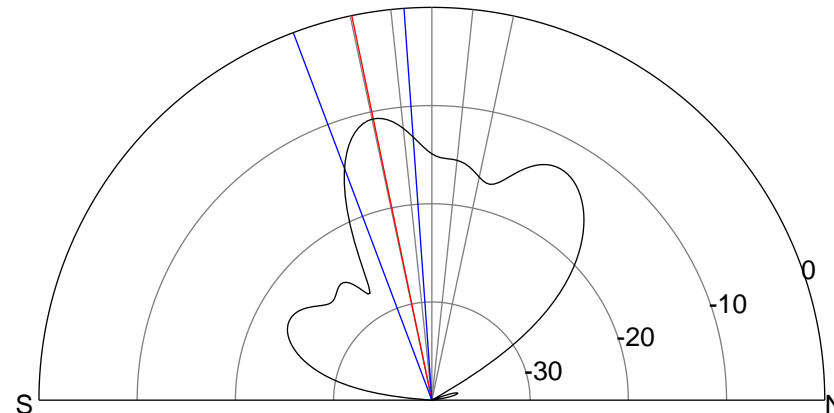
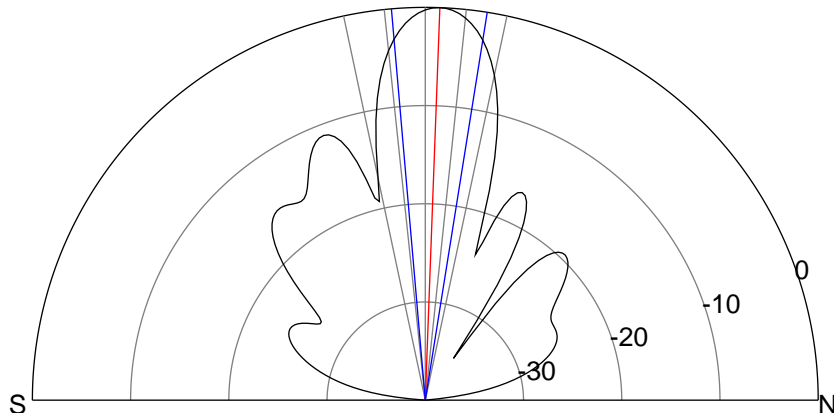
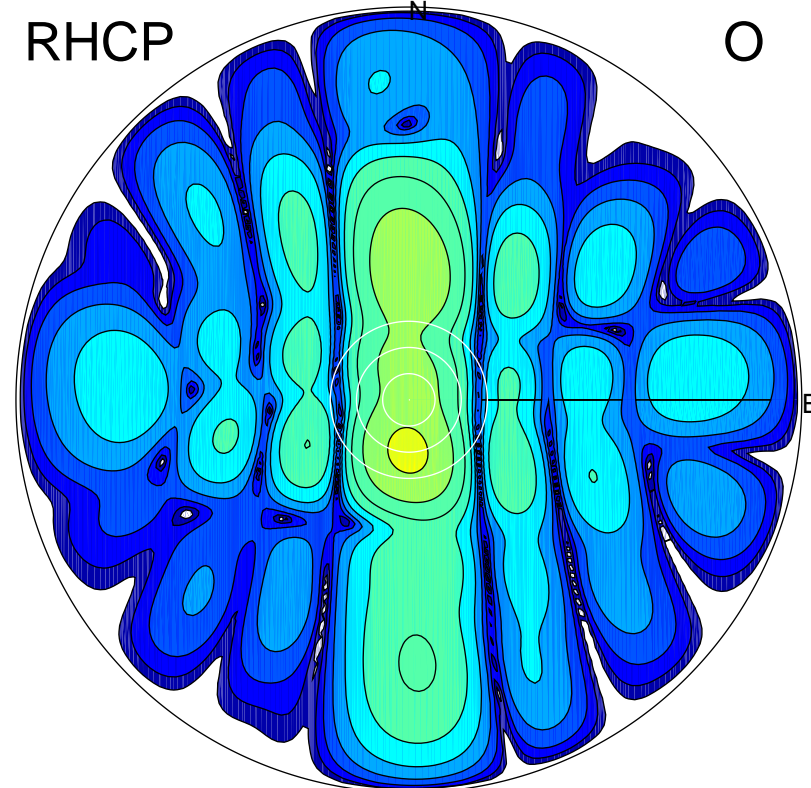
LHCP

X



RHCP

O



ERP 68.9 MW

Peak gain 21.5 dBi at Az 353 Zen 2
RHCP gain 6.2 dBi
N-S peak 21.5 dBi at Zen 2.1
N-S -3 dB beamwidth 14.0 deg.

ERP 5.8 MW

Peak gain 10.8 dBi at Az 181 Zen 12
LHCP gain 4.6 dBi
N-S peak 10.8 dBi at Zen -11.8
N-S -3 dB beamwidth 16.6 deg.