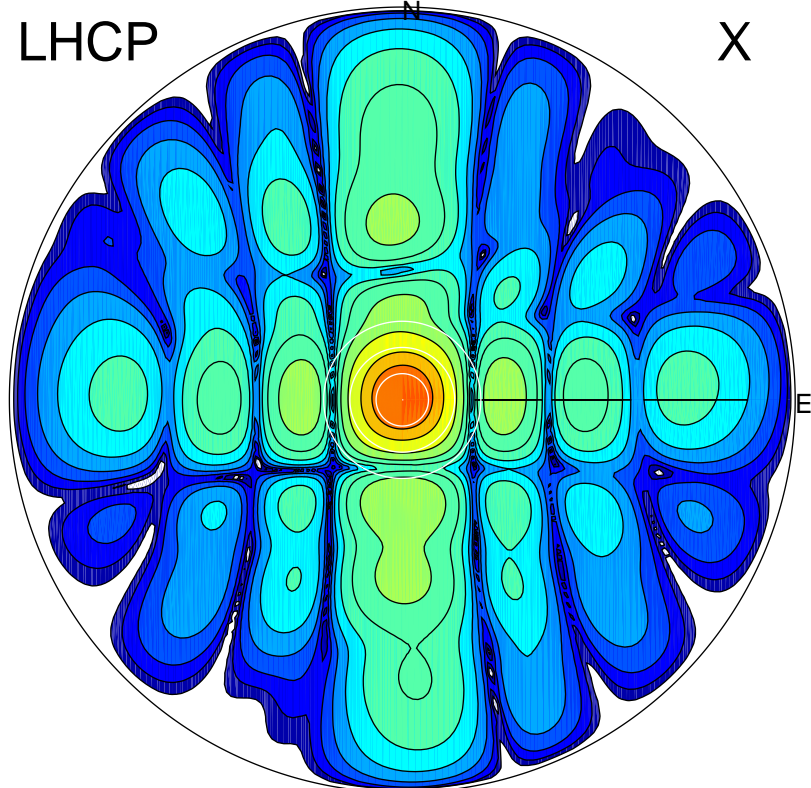


2017-11-13 12:58:00 A2 4.04000000 MHz 453.0 kW

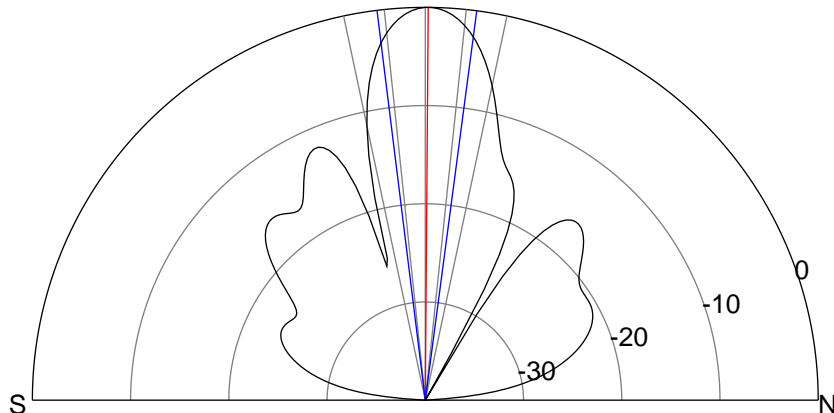
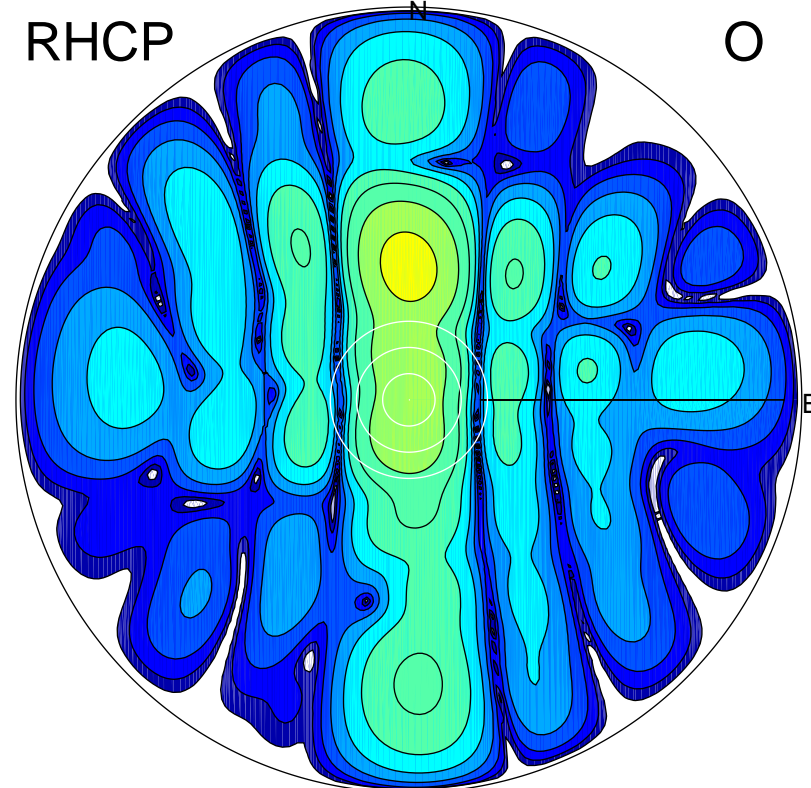
LHCP

X



RHCP

O



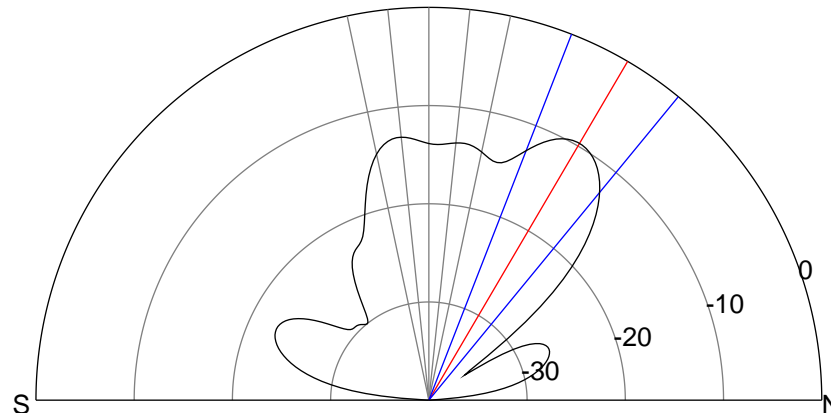
ERP 59.3 MW

Peak gain 21.2 dBi at Az 246 Zen 0

RHCP gain 7.3 dBi

N-S peak 21.2 dBi at Zen 0.4

N-S -3 dB beamwidth 14.6 deg.



ERP 6.4 MW

Peak gain 11.5 dBi at Az 0 Zen 30

LHCP gain -19.5 dBi

N-S peak 11.5 dBi at Zen 30.4

N-S -3 dB beamwidth 18.1 deg.