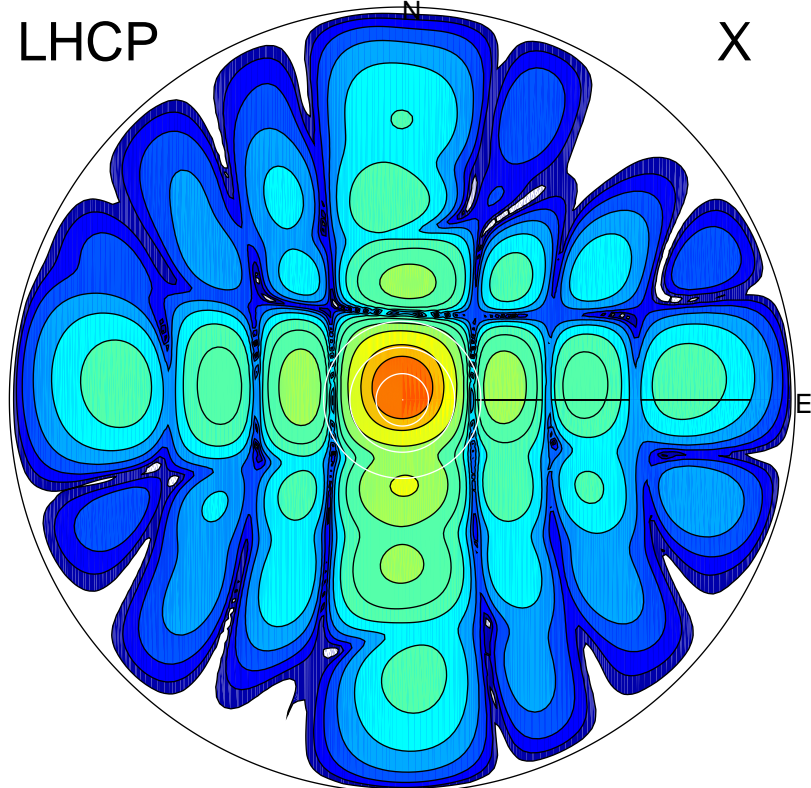


2017-11-13 12:54:10 A2 4.04000000 MHz 293.0 kW

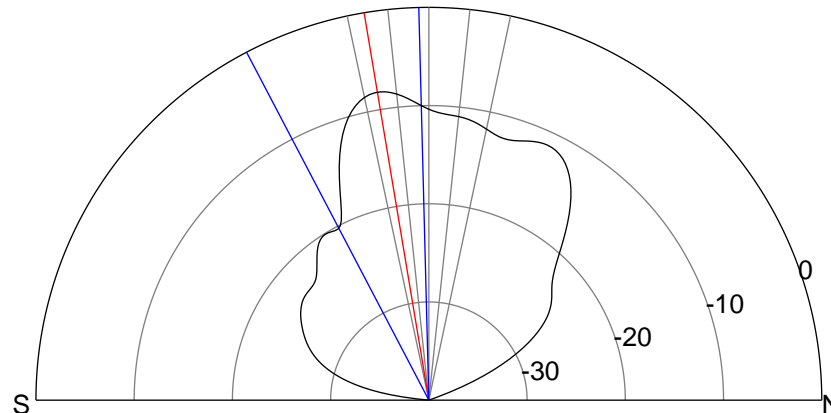
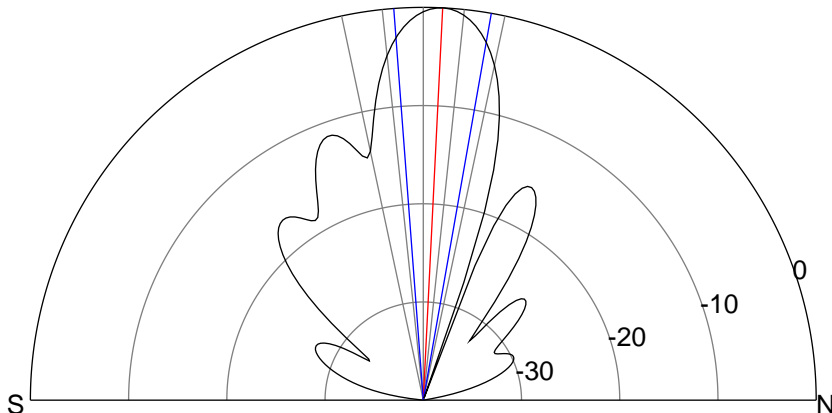
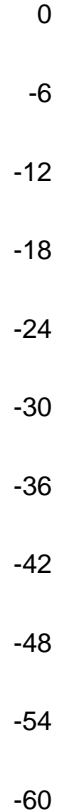
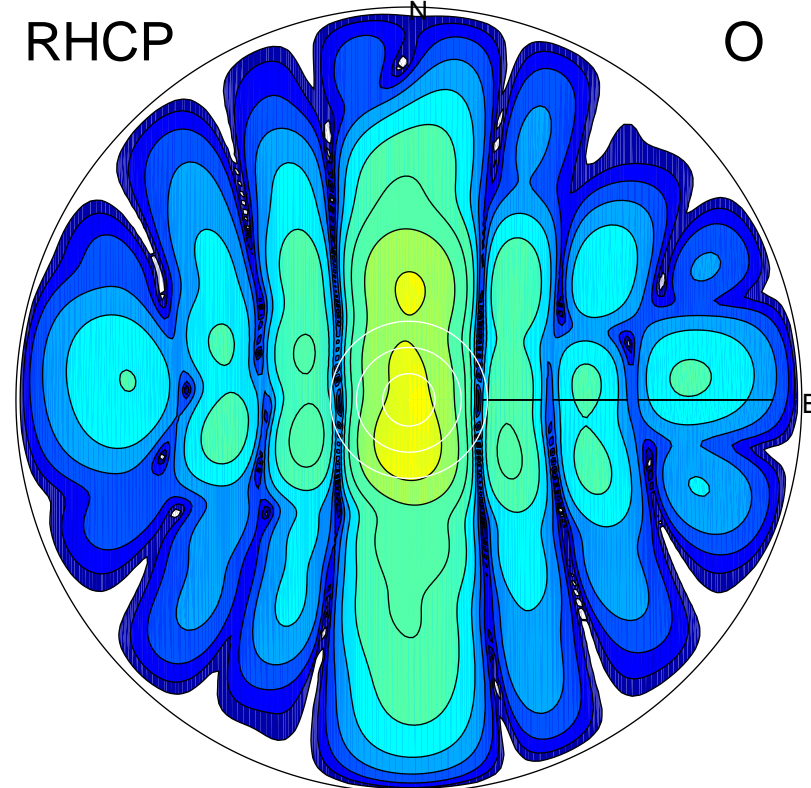
LHCP

X



RHCP

O



ERP 36.9 MW

Peak gain 21.0 dBi at Az 1 Zen 3
RHCP gain 10.2 dBi
N-S peak 21.0 dBi at Zen 2.8
N-S -3 dB beamwidth 14.3 deg.

ERP 5.6 MW

Peak gain 12.8 dBi at Az 182 Zen 9
LHCP gain 11.9 dBi
N-S peak 12.8 dBi at Zen -9.5
N-S -3 dB beamwidth 26.2 deg.