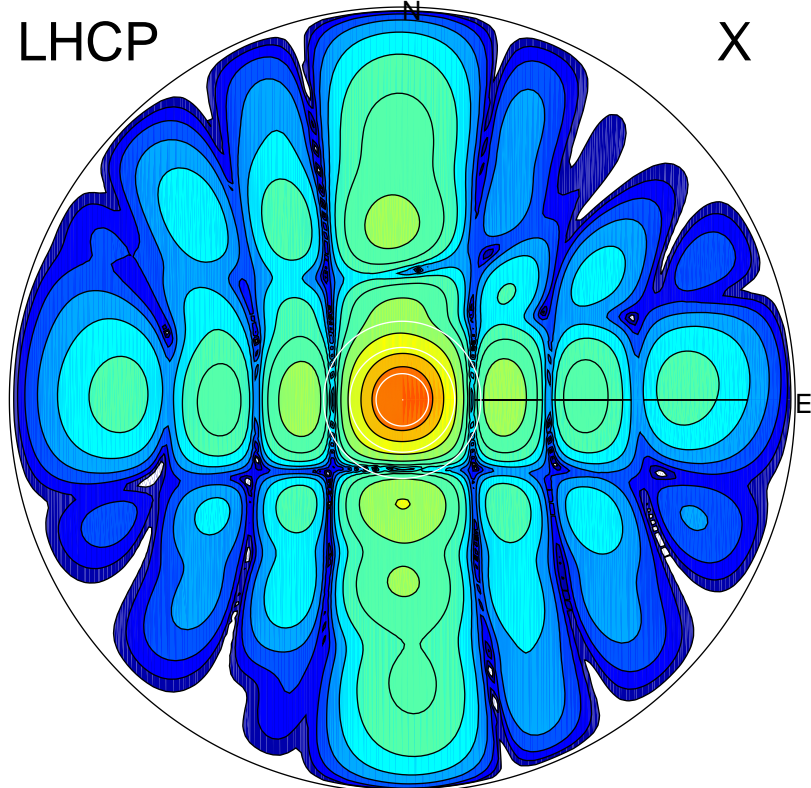


2017-11-13 12:54:00 A2 4.04000000 MHz 267.0 kW

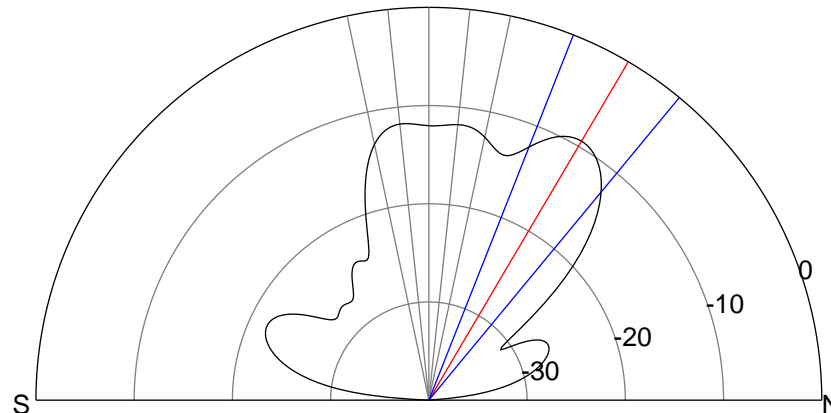
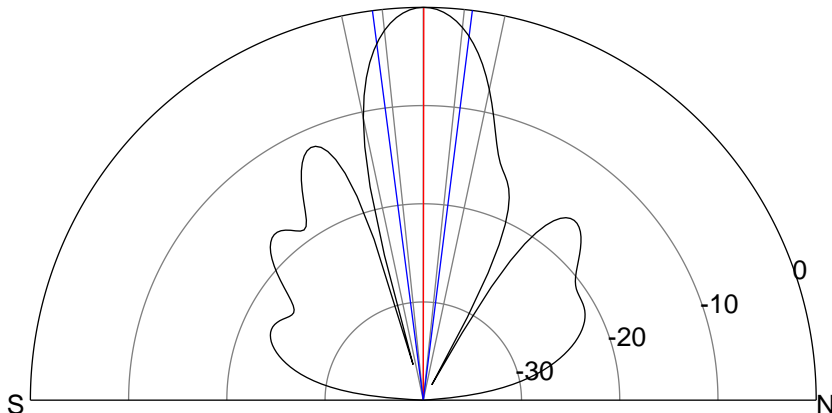
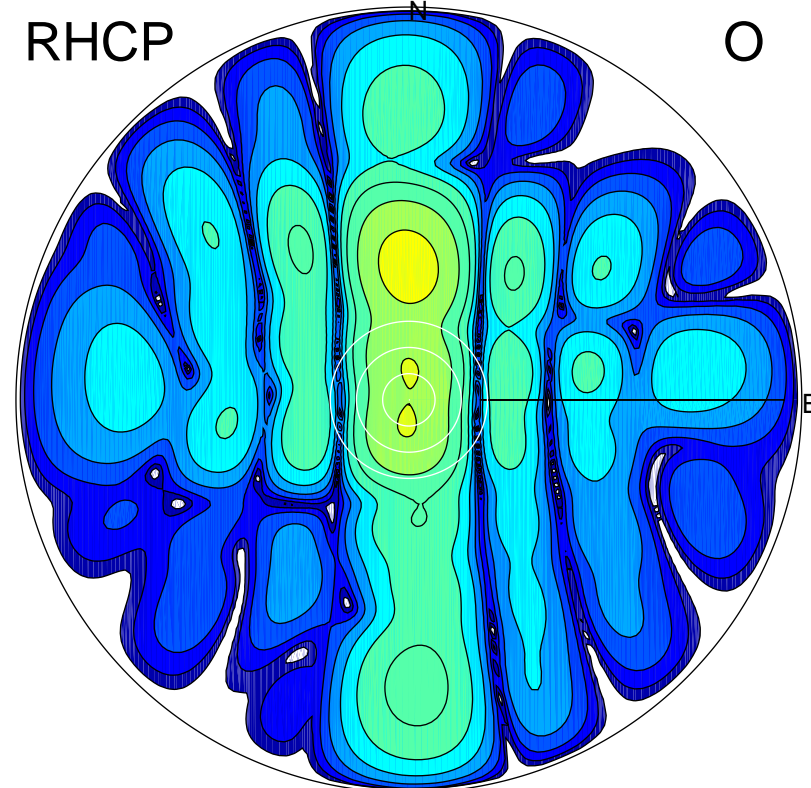
LHCP

X



RHCP

O



ERP 34.0 MW

Peak gain 21.1 dBi at Az 5 Zen 0
RHCP gain 9.0 dBi
N-S peak 21.1 dBi at Zen 0.1
N-S -3 dB beamwidth 14.6 deg.

ERP 3.9 MW

Peak gain 11.7 dBi at Az 0 Zen 31
LHCP gain -5.5 dBi
N-S peak 11.7 dBi at Zen 30.5
N-S -3 dB beamwidth 18.0 deg.