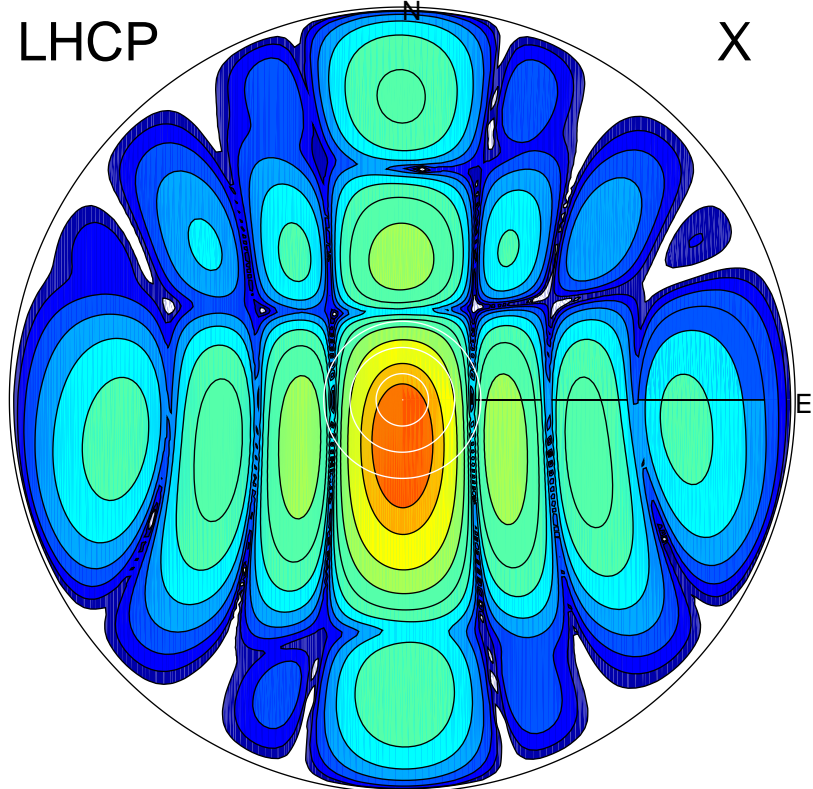
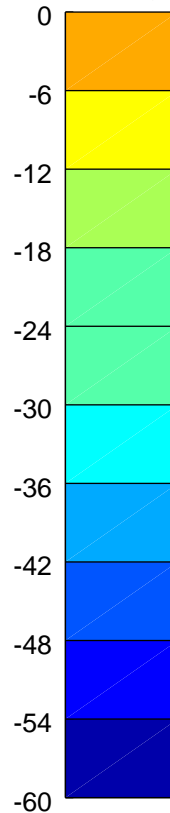


2017-11-10 14:46:30 A2 4.04000000 MHz 338.0 kW

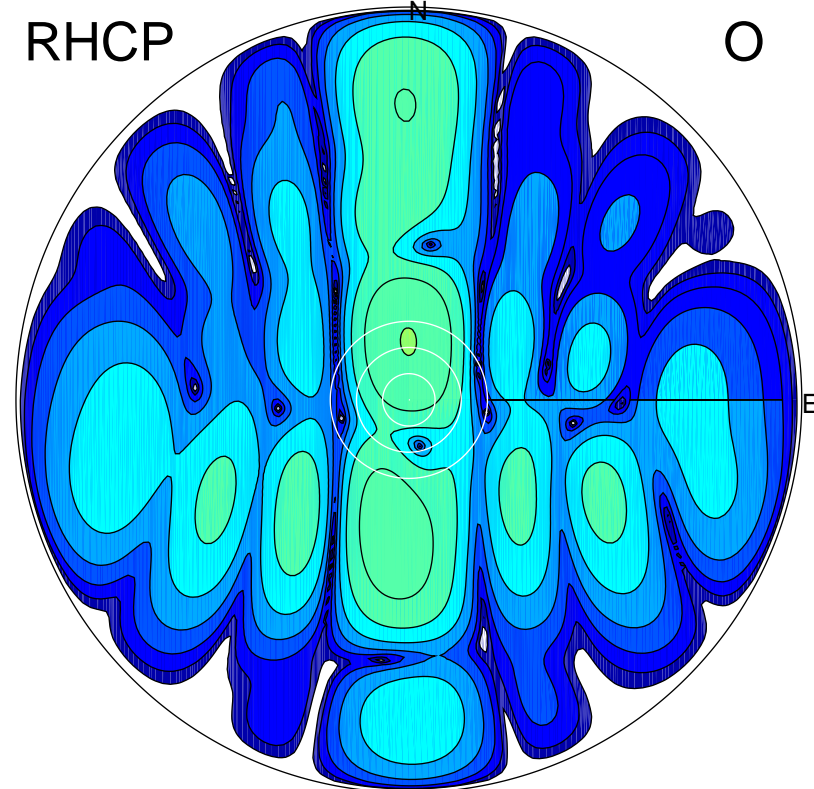
LHCP



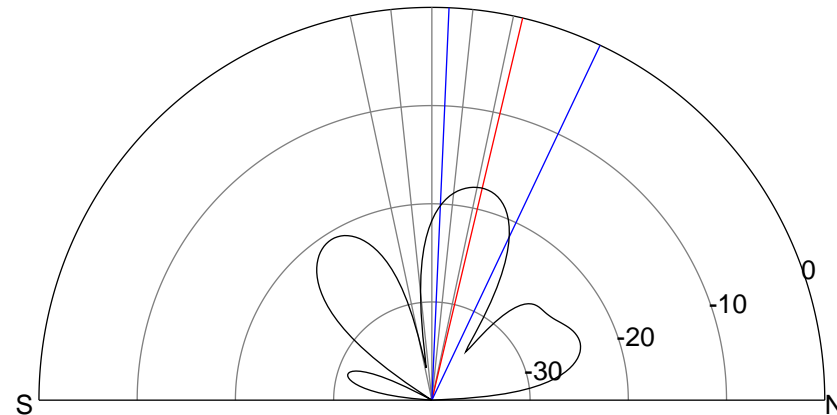
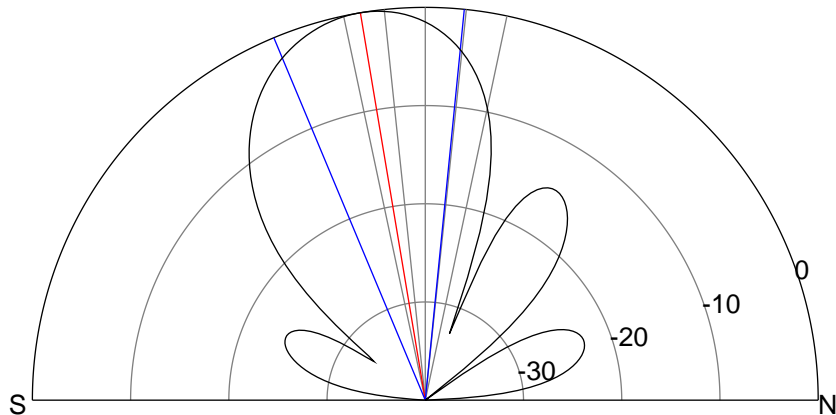
X



RHCP



O



ERP 29.6 MW

Peak gain 19.4 dBi at Az 178 Zen 10
RHCP gain -18.5 dBi
N-S peak 19.4 dBi at Zen -9.5
N-S -3 dB beamwidth 28.4 deg.

ERP 0.5 MW

Peak gain 1.6 dBi at Az 0 Zen 13
LHCP gain 8.5 dBi
N-S peak 1.6 dBi at Zen 13.4
N-S -3 dB beamwidth 22.9 deg.