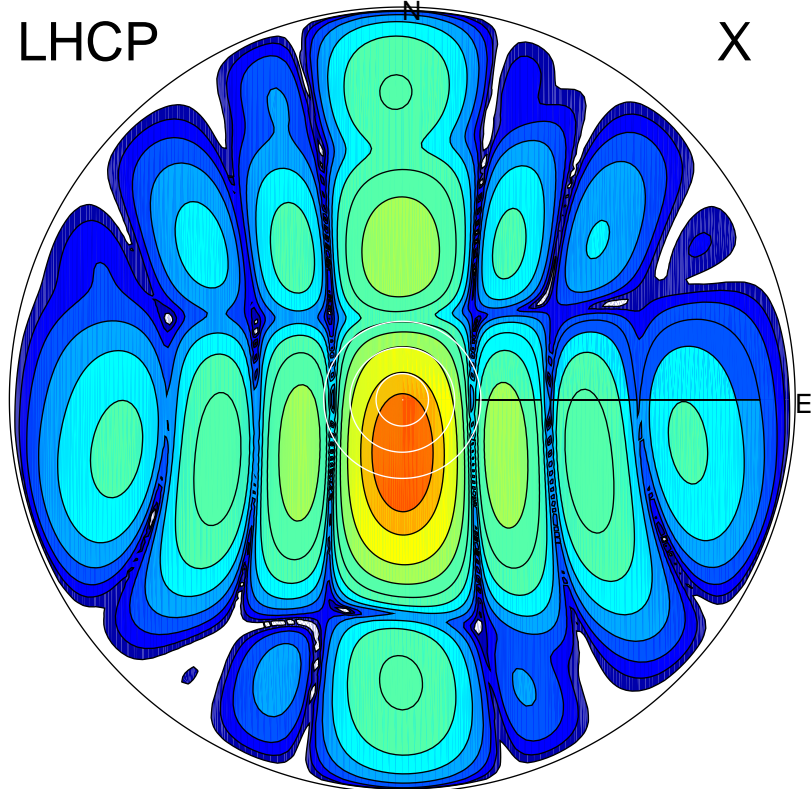


2017-11-10 14:46:30 A2 4.03598300 MHz 404.0 kW

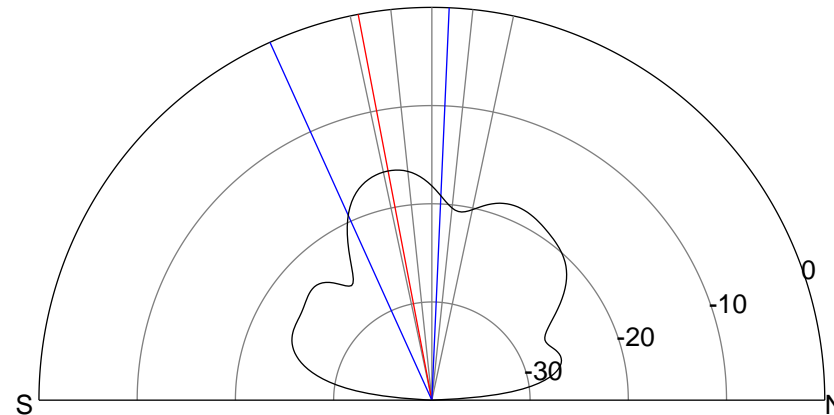
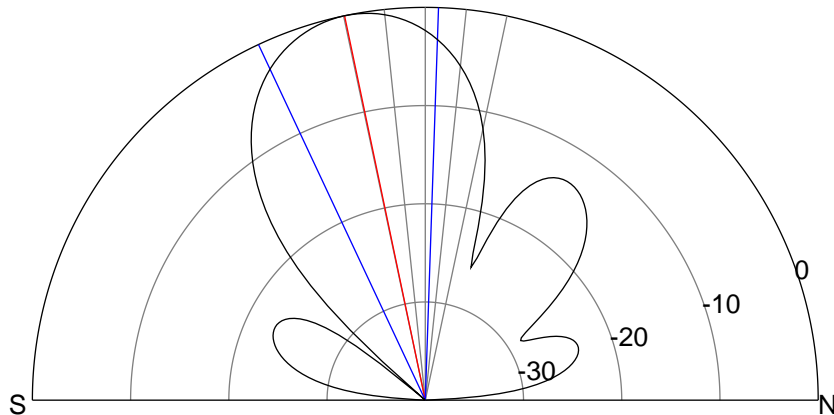
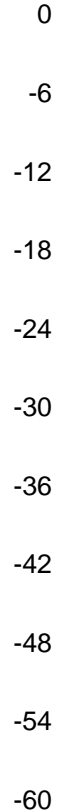
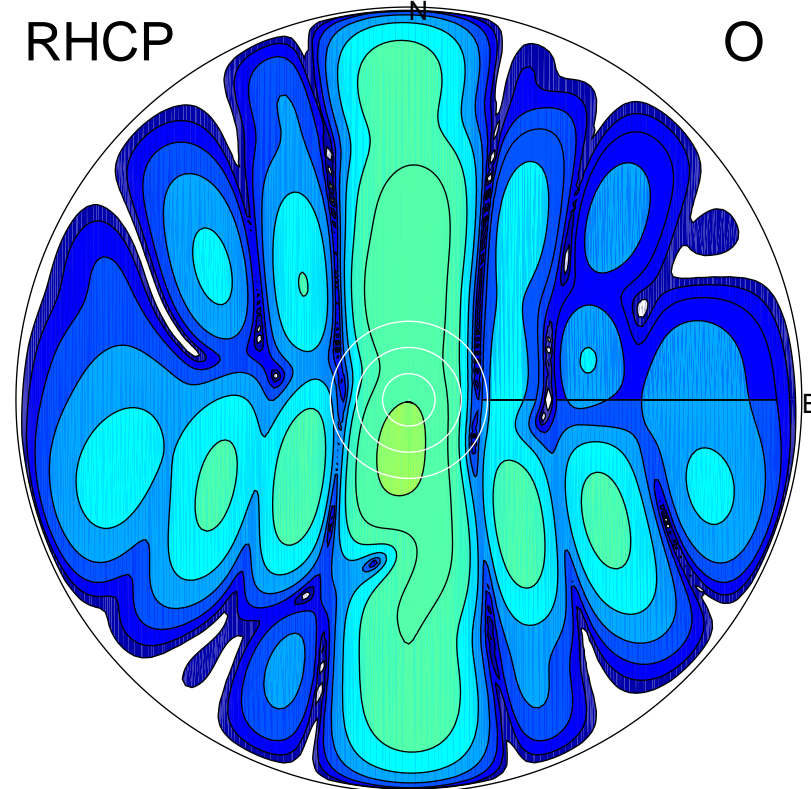
LHCP

X



RHCP

O



ERP 36.0 MW

Peak gain 19.5 dBi at Az 179 Zen 12
RHCP gain 3.2 dBi
N-S peak 19.5 dBi at Zen -11.9
N-S -3 dB beamwidth 27.1 deg.

ERP 0.9 MW

Peak gain 3.5 dBi at Az 189 Zen 11
LHCP gain 19.3 dBi
N-S peak 3.3 dBi at Zen -10.8
N-S -3 dB beamwidth 26.9 deg.