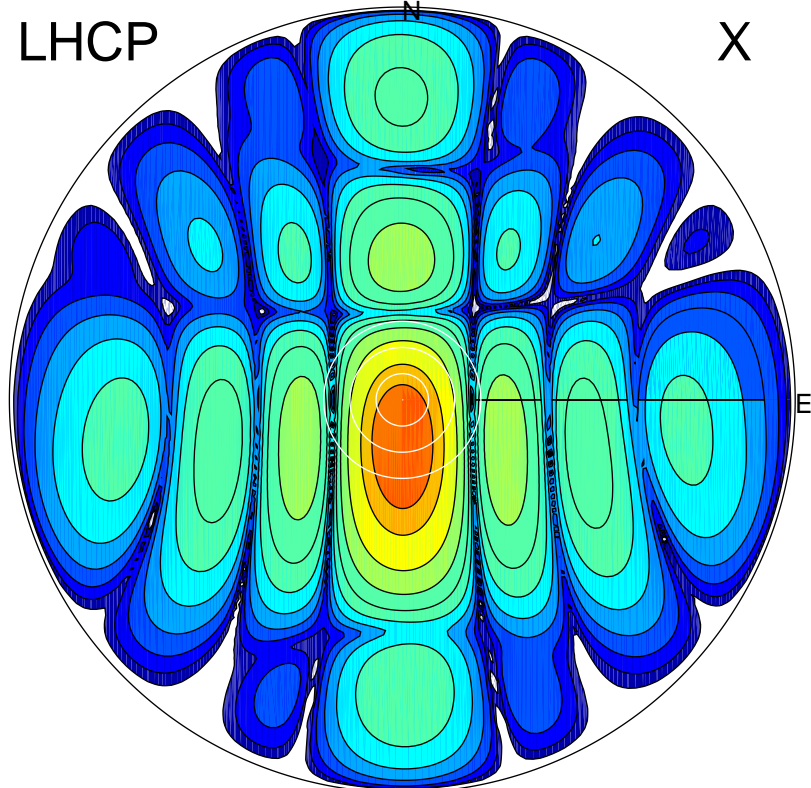


2017-11-10 14:40:30 A2 4.04000000 MHz 337.0 kW

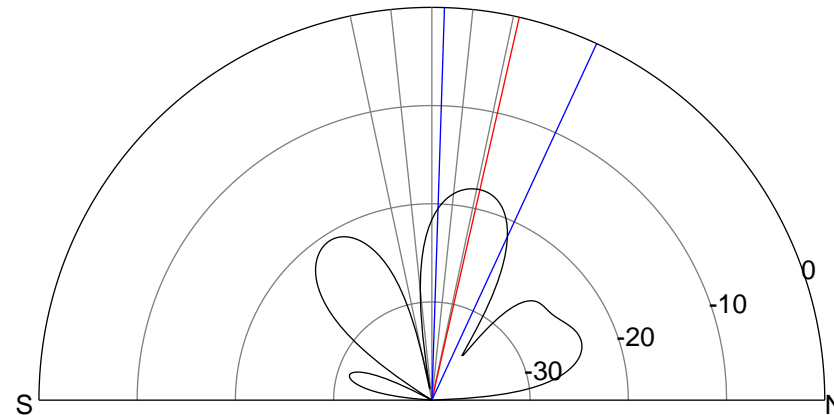
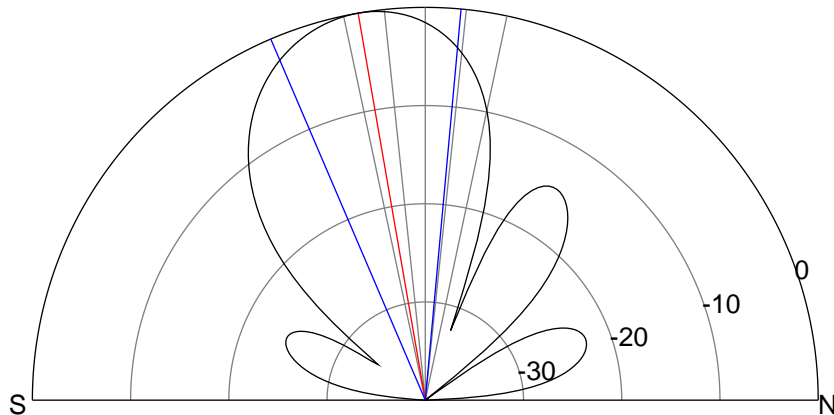
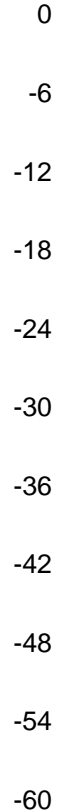
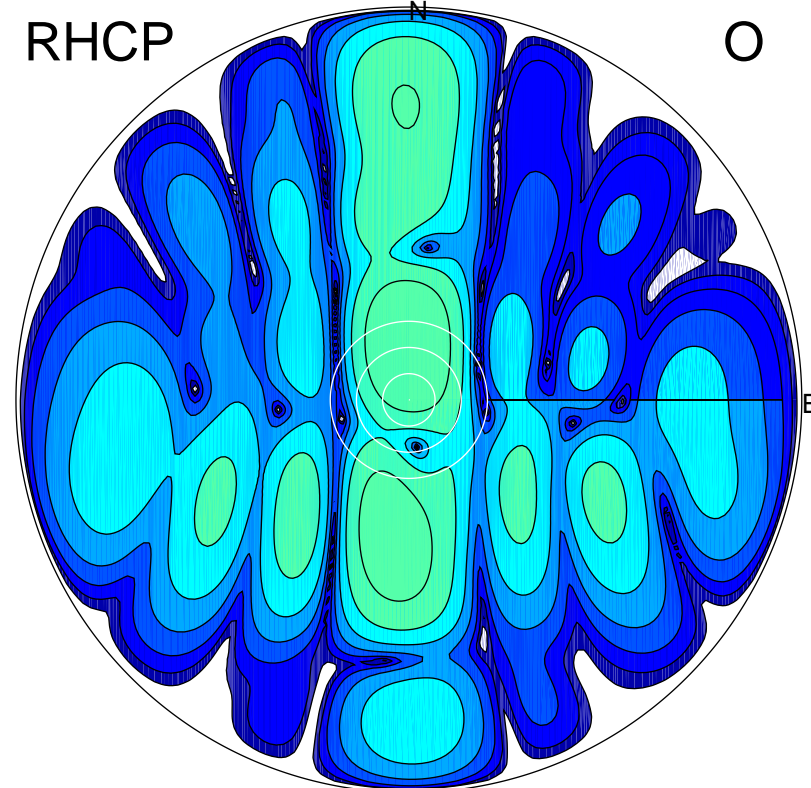
LHCP

X



RHCP

O



ERP 29.5 MW

Peak gain 19.4 dBi at Az 179 Zen 10
RHCP gain -20.1 dBi
N-S peak 19.4 dBi at Zen -9.8
N-S -3 dB beamwidth 28.4 deg.

ERP 0.5 MW

Peak gain 1.4 dBi at Az 359 Zen 13
LHCP gain 8.3 dBi
N-S peak 1.4 dBi at Zen 12.9
N-S -3 dB beamwidth 23.0 deg.