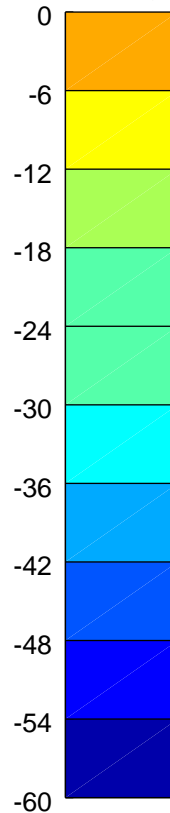
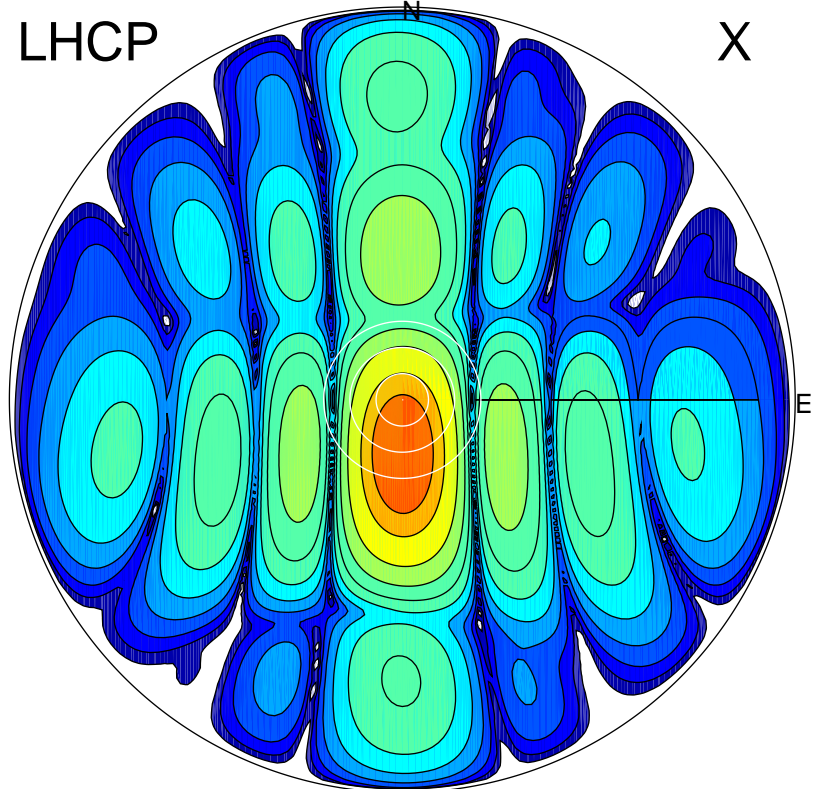


2017-11-10 14:40:30 A2 4.03698300 MHz 407.0 kW

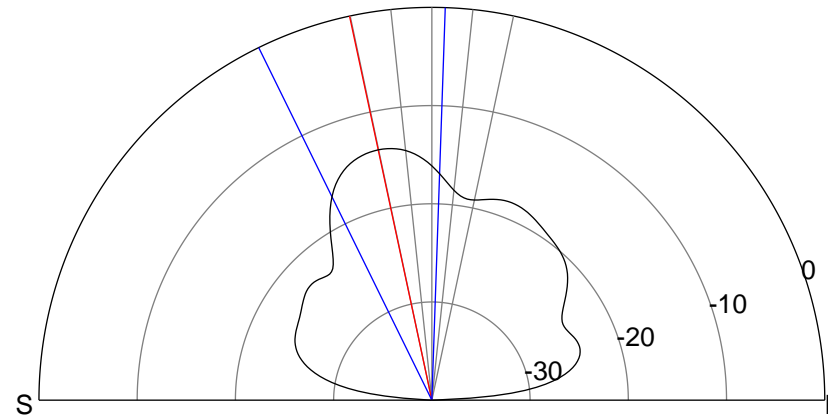
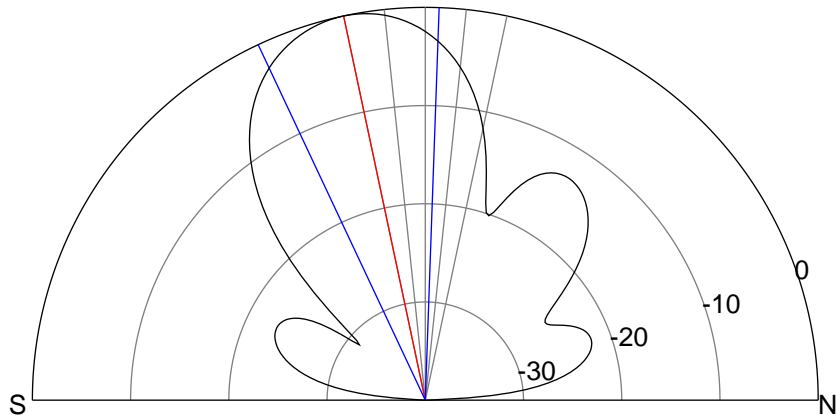
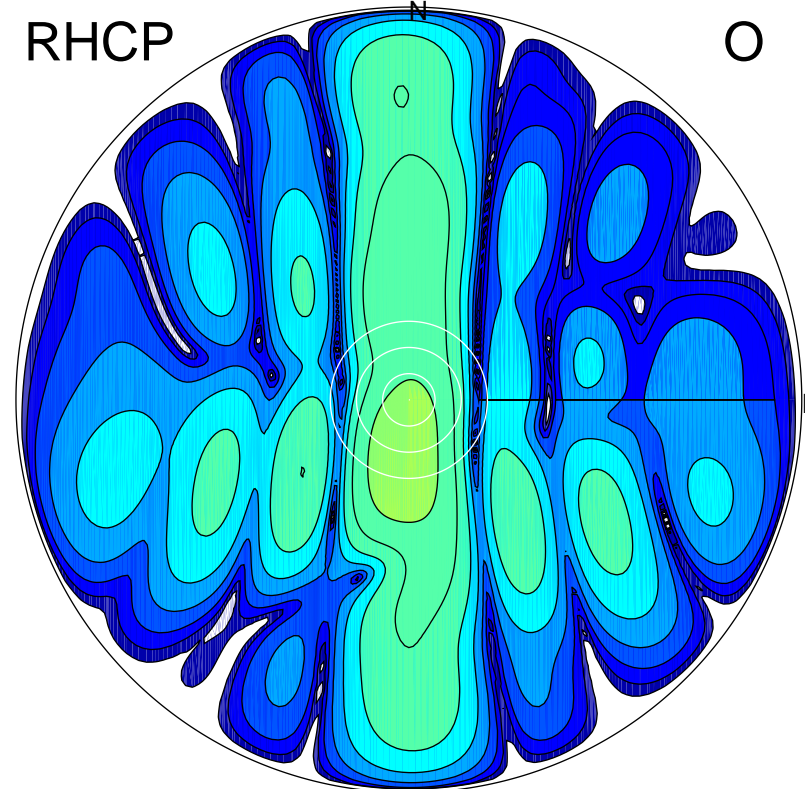
LHCP

X



RHCP

O



ERP 35.2 MW

Peak gain 19.4 dBi at Az 180 Zen 12
RHCP gain 5.4 dBi
N-S peak 19.4 dBi at Zen -12.0
N-S -3 dB beamwidth 27.2 deg.

ERP 1.5 MW

Peak gain 5.6 dBi at Az 187 Zen 12
LHCP gain 19.2 dBi
N-S peak 5.4 dBi at Zen -12.1
N-S -3 dB beamwidth 28.1 deg.