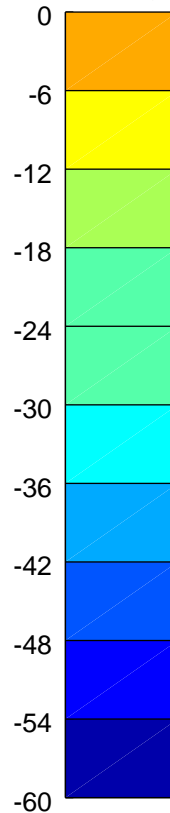
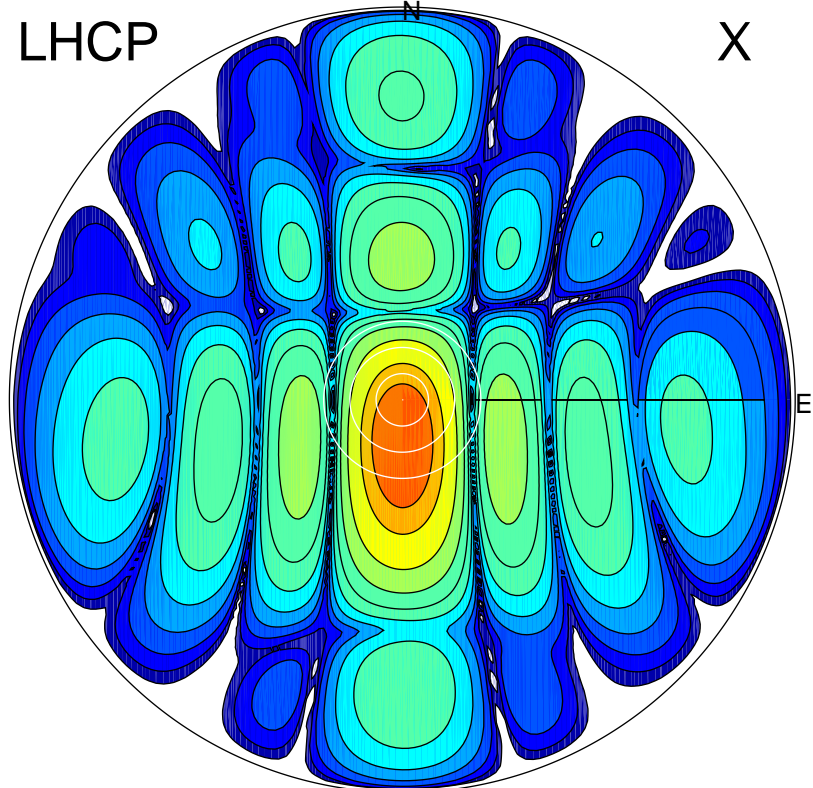


2017-11-10 14:34:30 A2 4.04000000 MHz 338.0 kW

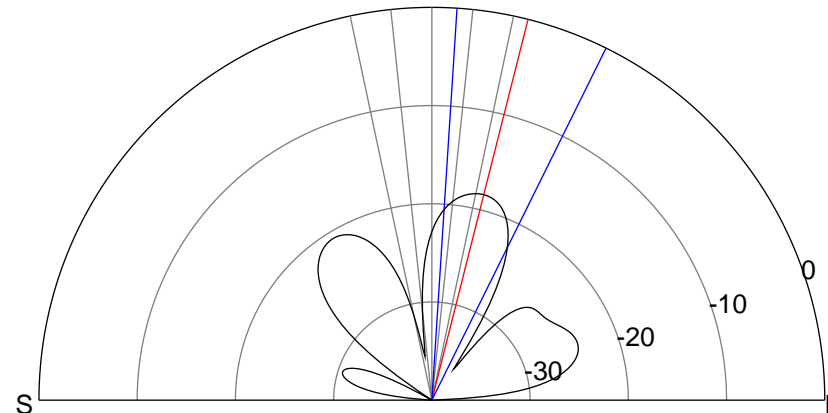
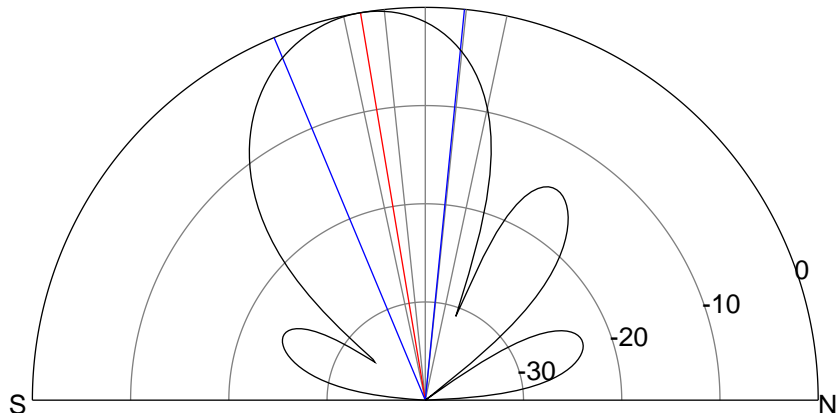
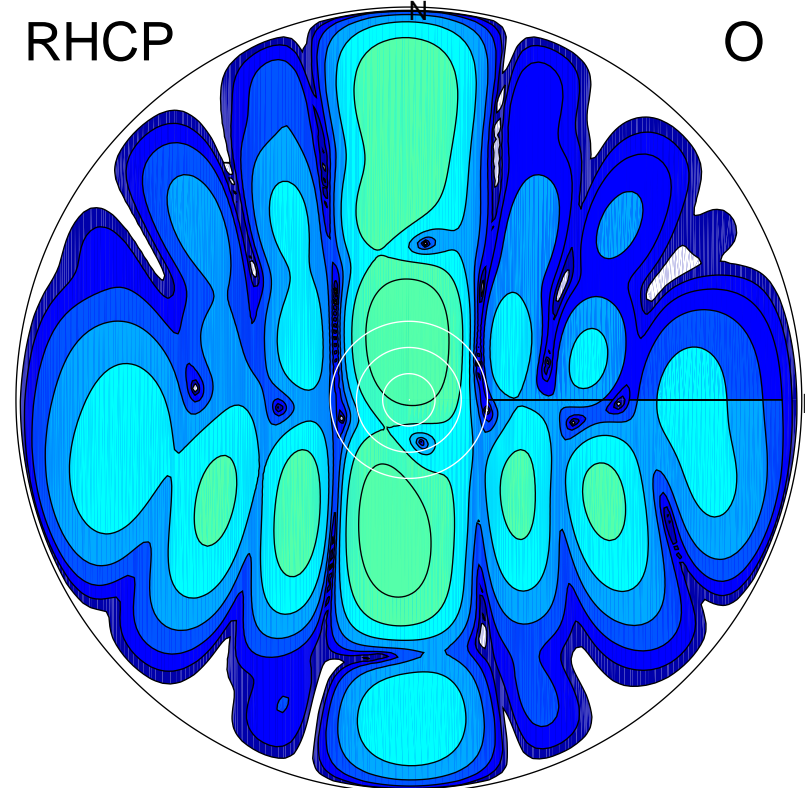
LHCP

X



RHCP

O



ERP 29.7 MW

Peak gain 19.4 dBi at Az 179 Zen 9
RHCP gain -16.5 dBi
N-S peak 19.4 dBi at Zen -9.5
N-S -3 dB beamwidth 28.4 deg.

ERP 0.4 MW

Peak gain 1.0 dBi at Az 358 Zen 14
LHCP gain 7.1 dBi
N-S peak 1.0 dBi at Zen 14.2
N-S -3 dB beamwidth 22.6 deg.