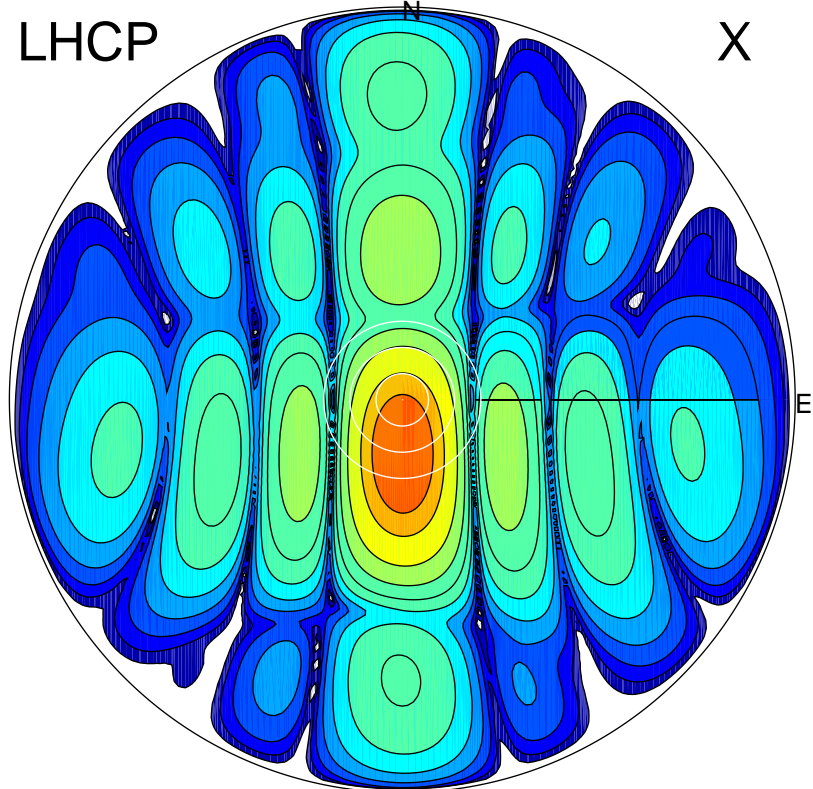


2017-11-10 14:34:30 A2 4.03798300 MHz 408.0 kW

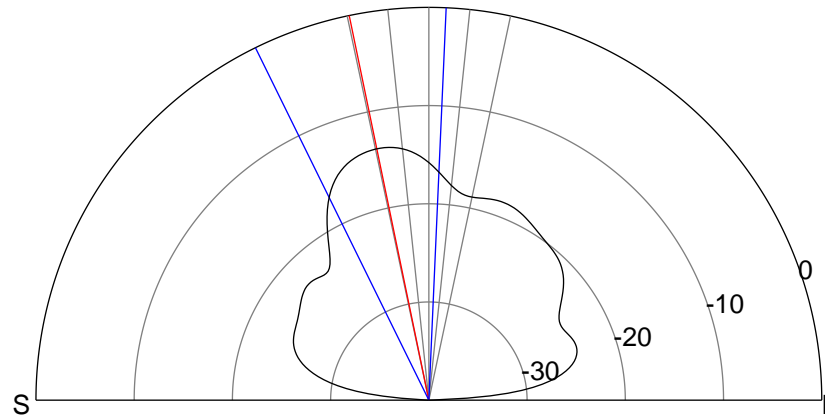
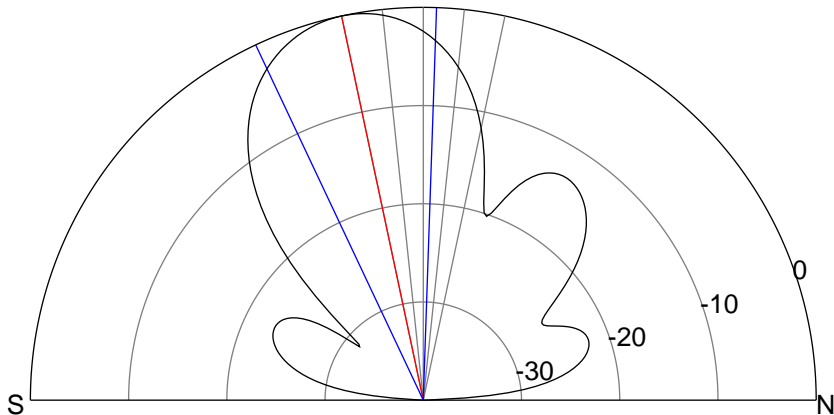
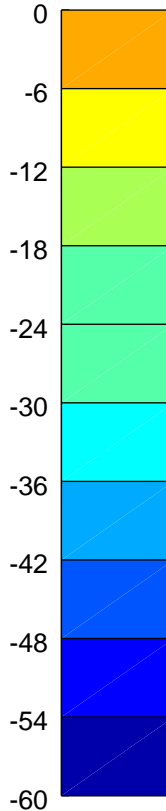
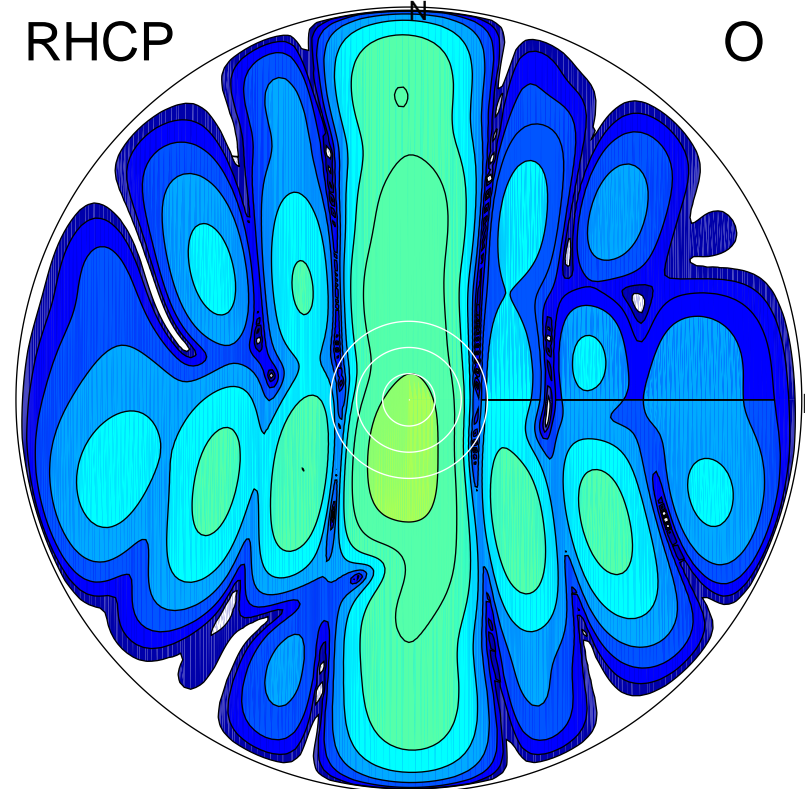
LHCP

X



RHCP

O



### ERP 35.3 MW

Peak gain 19.4 dBi at Az 179 Zen 12  
RHCP gain 5.5 dBi  
N-S peak 19.4 dBi at Zen -12.0  
N-S -3 dB beamwidth 27.2 deg.

### ERP 1.5 MW

Peak gain 5.6 dBi at Az 188 Zen 12  
LHCP gain 19.2 dBi  
N-S peak 5.5 dBi at Zen -11.7  
N-S -3 dB beamwidth 28.7 deg.