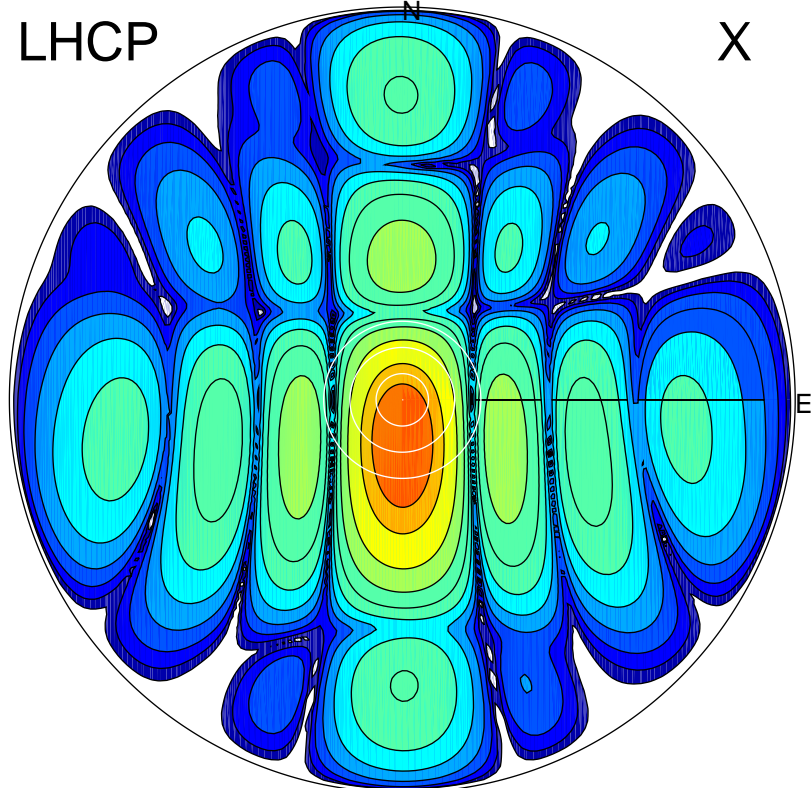


2017-11-10 14:28:30 A2 4.04000000 MHz 348.0 kW

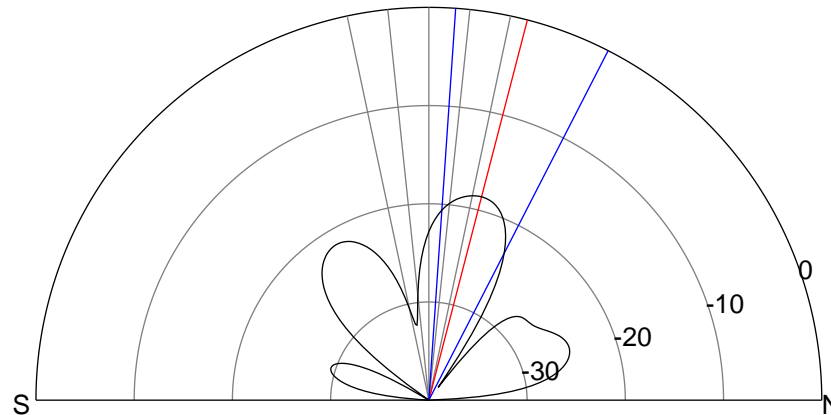
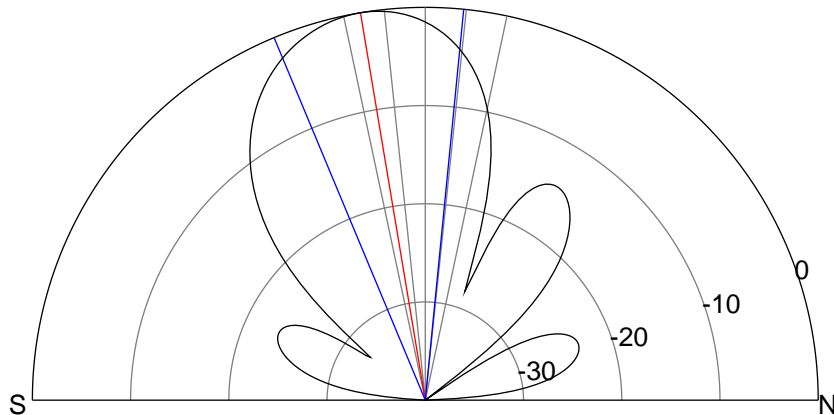
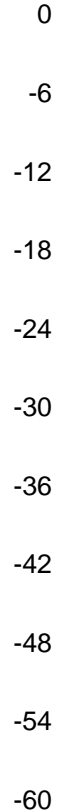
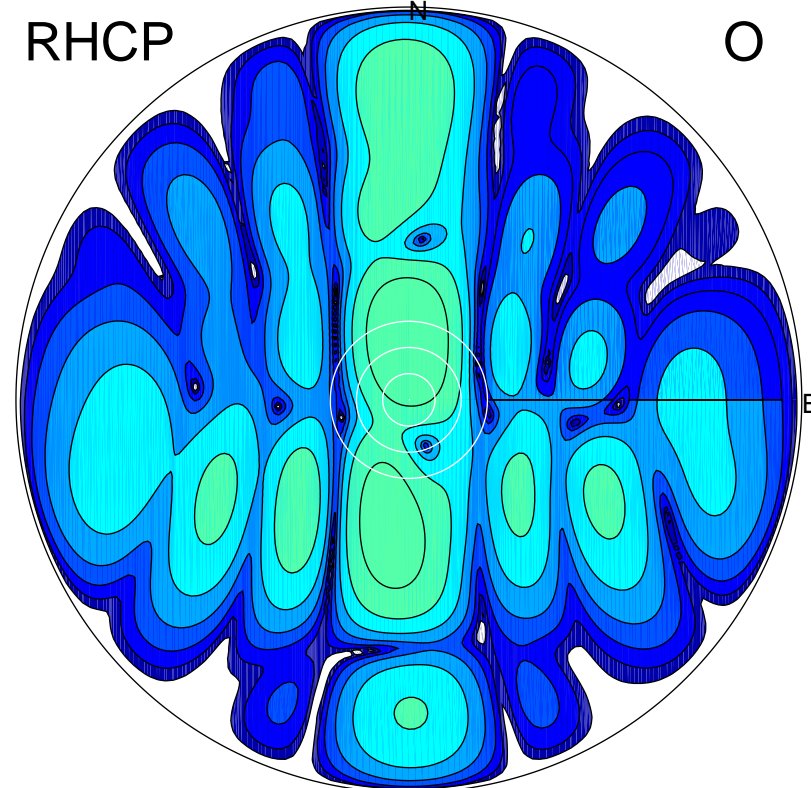
LHCP

X



RHCP

O



ERP 30.7 MW

Peak gain 19.5 dBi at Az 179 Zen 9
RHCP gain -13.1 dBi
N-S peak 19.5 dBi at Zen -9.5
N-S -3 dB beamwidth 28.2 deg.

ERP 0.4 MW

Peak gain 0.9 dBi at Az 358 Zen 15
LHCP gain 5.3 dBi
N-S peak 0.9 dBi at Zen 14.5
N-S -3 dB beamwidth 23.2 deg.