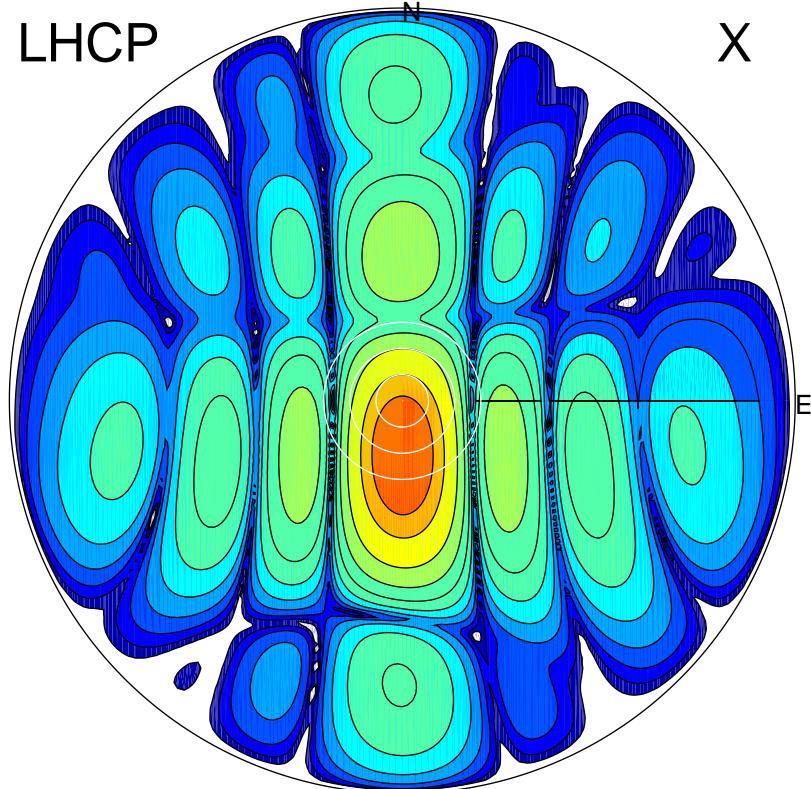


2017-11-10 14:28:30 A2 4.03898300 MHz 414.0 kW

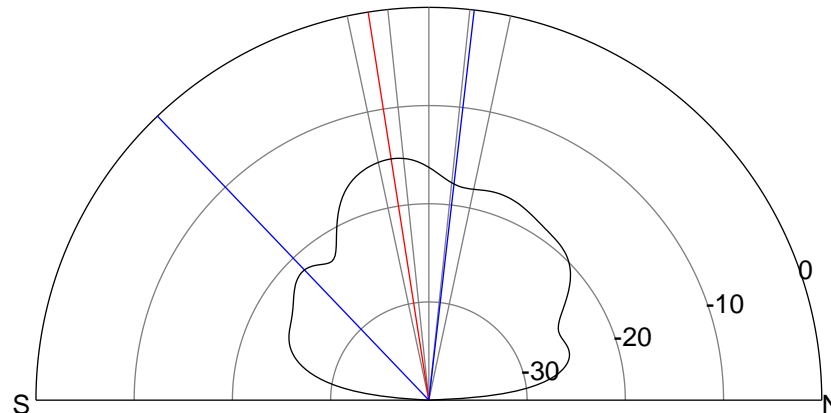
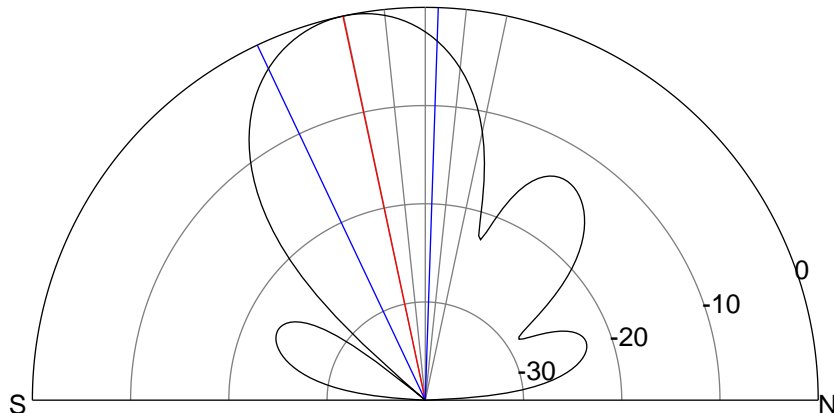
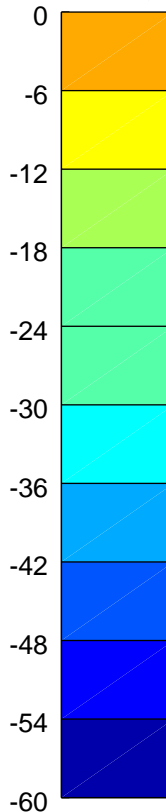
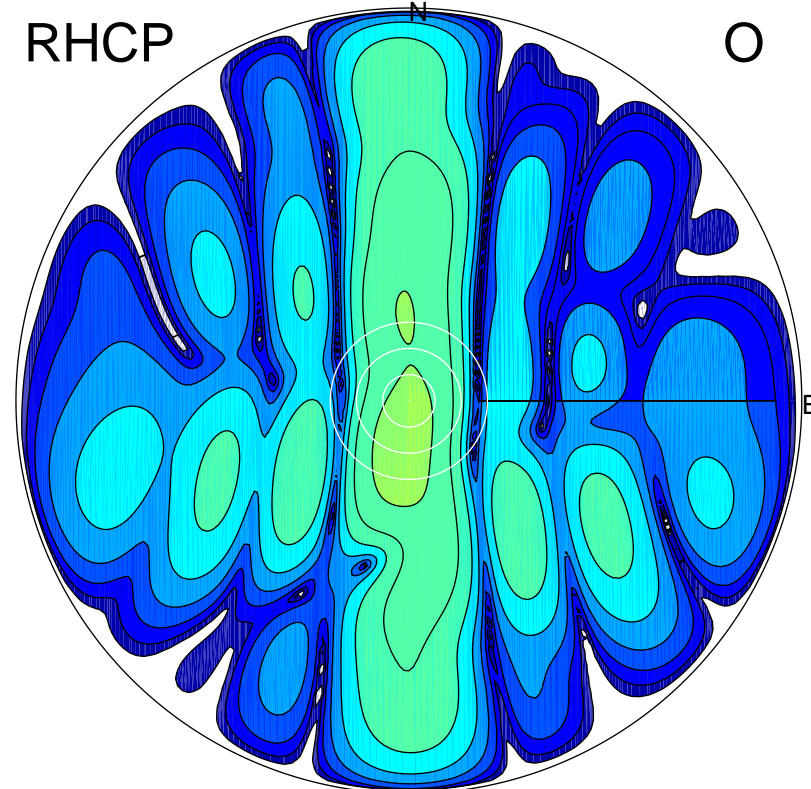
LHCP

X



RHCP

O



ERP 36.1 MW

Peak gain 19.4 dBi at Az 179 Zen 12
RHCP gain 4.1 dBi
N-S peak 19.4 dBi at Zen -12.1
N-S -3 dB beamwidth 27.2 deg.

ERP 1.1 MW

Peak gain 4.4 dBi at Az 189 Zen 10
LHCP gain 19.2 dBi
N-S peak 4.3 dBi at Zen -8.9
N-S -3 dB beamwidth 50.3 deg.