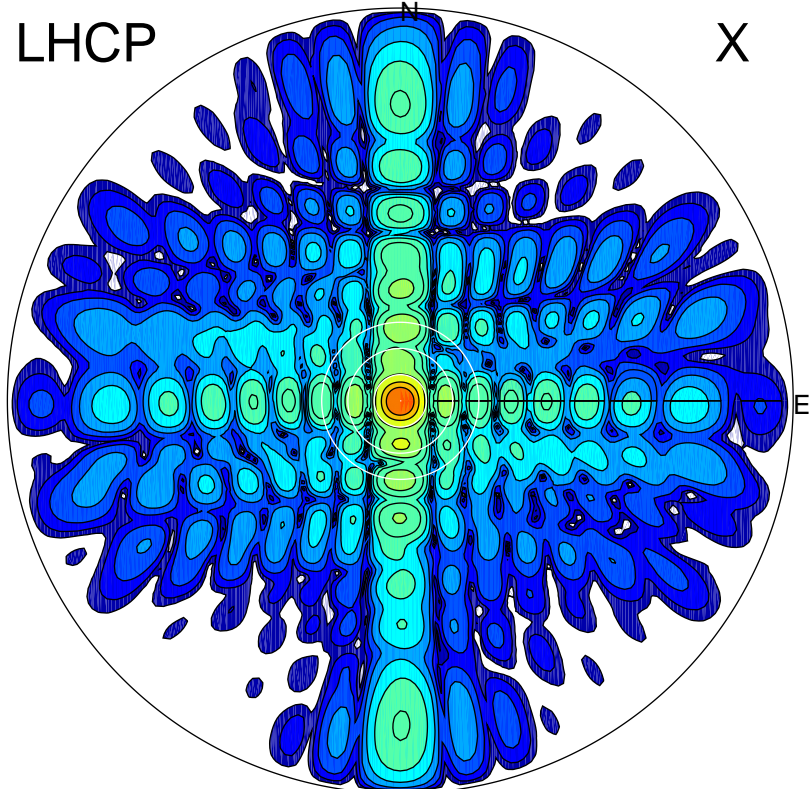


2017-11-07 12:07:00 A1 6.20000000 MHz 5.0 kW

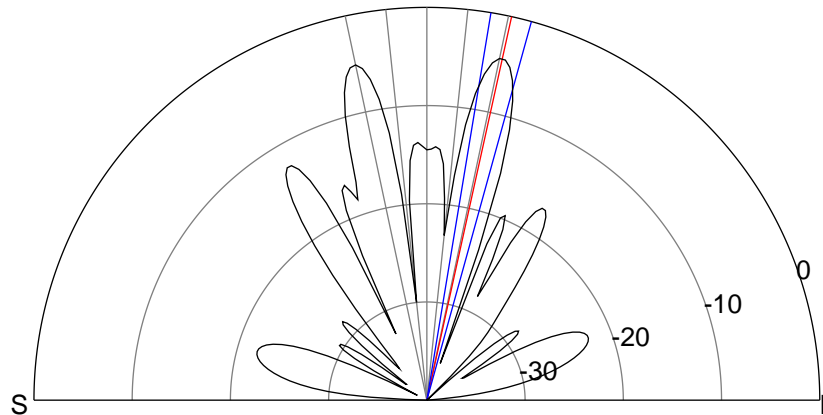
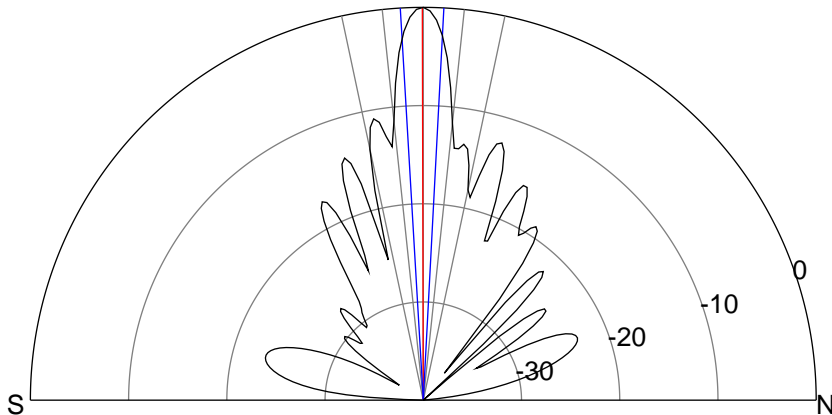
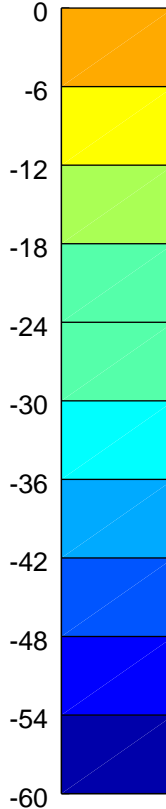
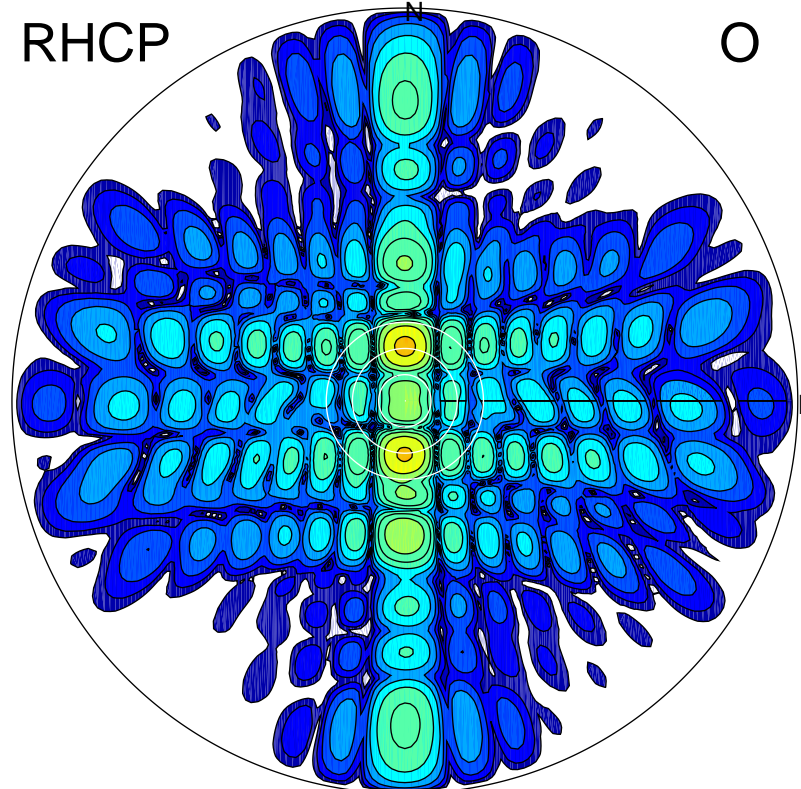
LHCP

X



RHCP

O



ERP 2.1 MW

Peak gain 26.3 dBi at Az 2 Zen 0
RHCP gain 11.8 dBi
N-S peak 26.3 dBi at Zen -0.1
N-S -3 dB beamwidth 6.4 deg.

ERP 0.8 MW

Peak gain 21.8 dBi at Az 0 Zen 12
LHCP gain 8.2 dBi
N-S peak 21.9 dBi at Zen 12.5
N-S -3 dB beamwidth 6.0 deg.