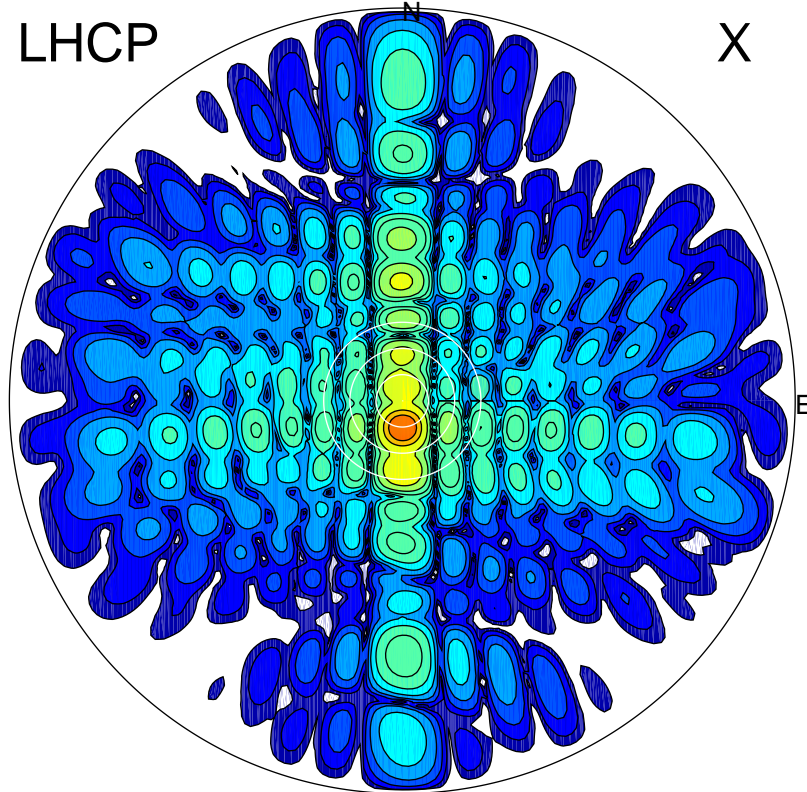


2017-11-07 11:34:00 A1 6.20000000 MHz 4.0 kW

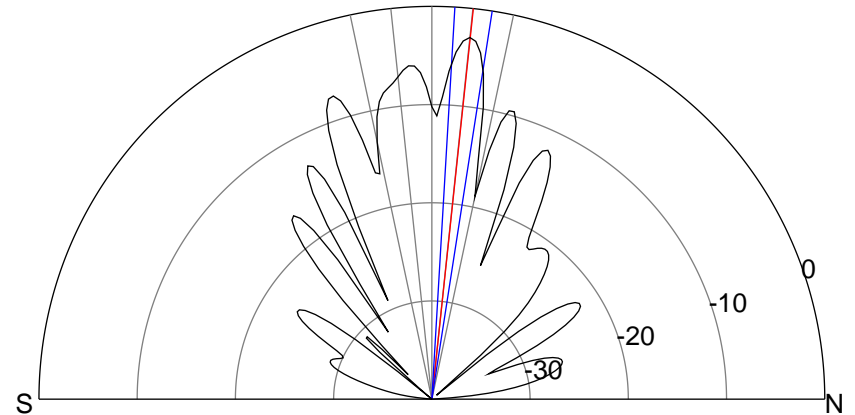
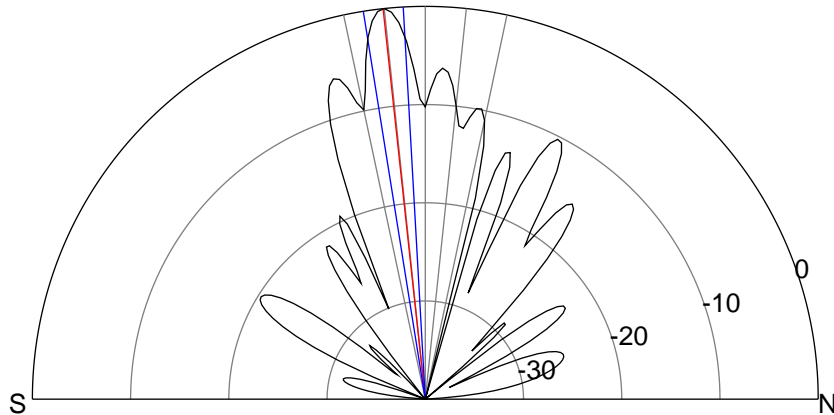
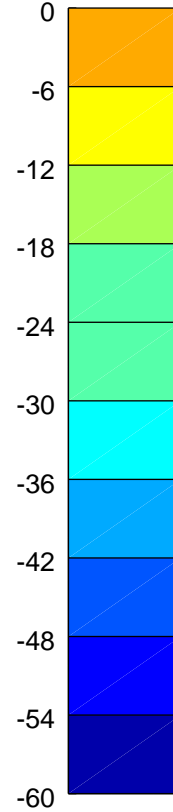
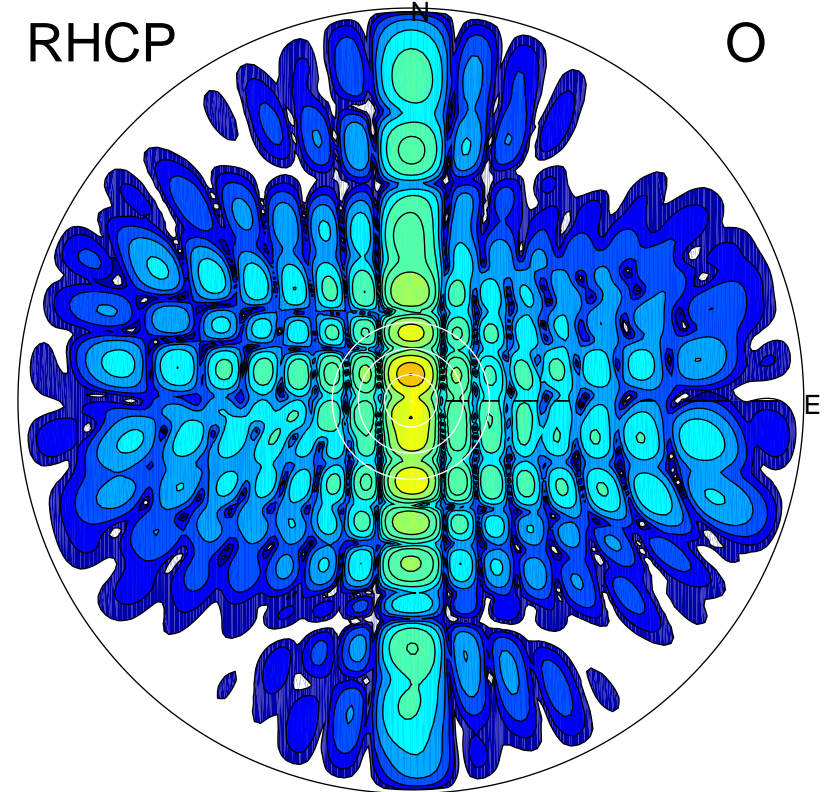
LHCP

X



RHCP

O



ERP 1.3 MW

Peak gain 25.1 dBi at Az 179 Zen 6
RHCP gain 18.1 dBi
N-S peak 25.1 dBi at Zen -6.2
N-S -3 dB beamwidth 5.9 deg.

ERP 0.7 MW

Peak gain 22.1 dBi at Az 0 Zen 6
LHCP gain 15.1 dBi
N-S peak 22.1 dBi at Zen 6.1
N-S -3 dB beamwidth 5.5 deg.