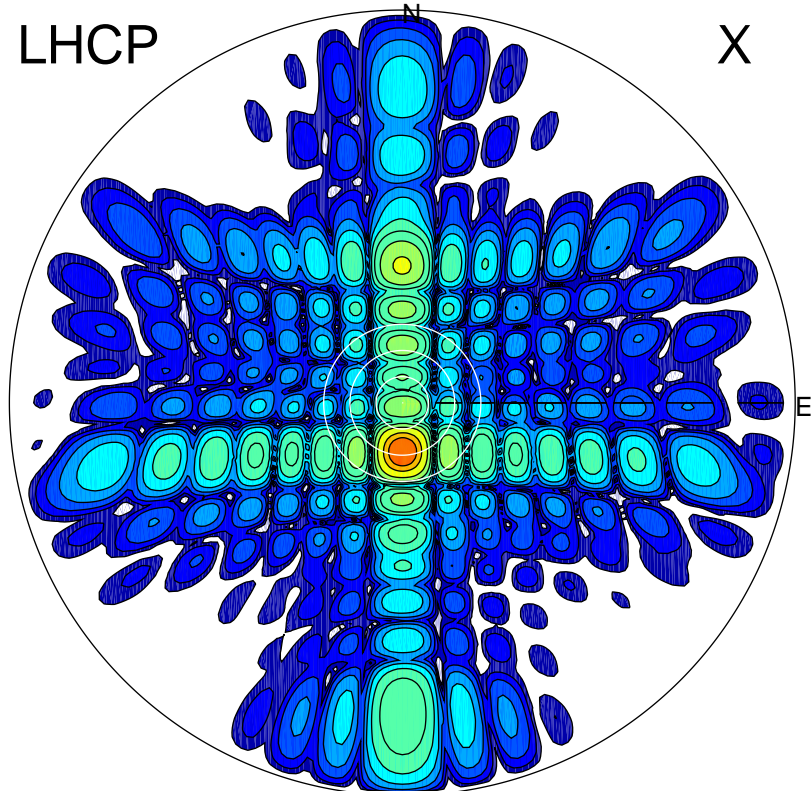


2017-11-07 11:28:00 A1 6.20000000 MHz 762.0 kW

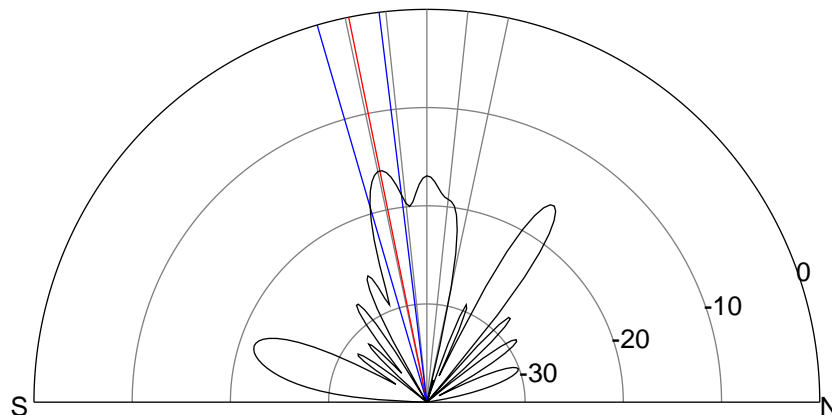
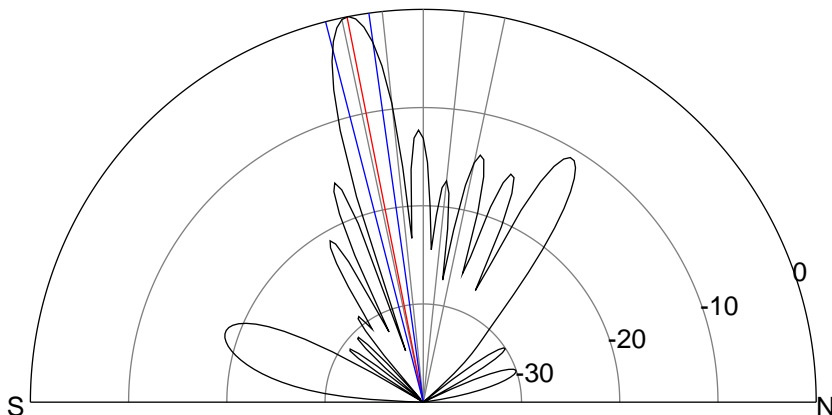
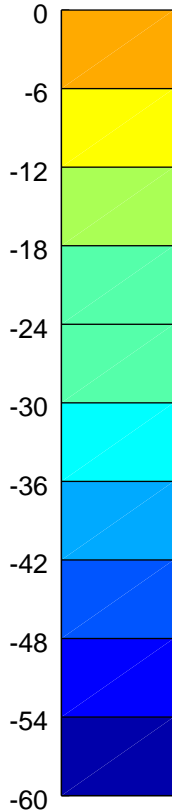
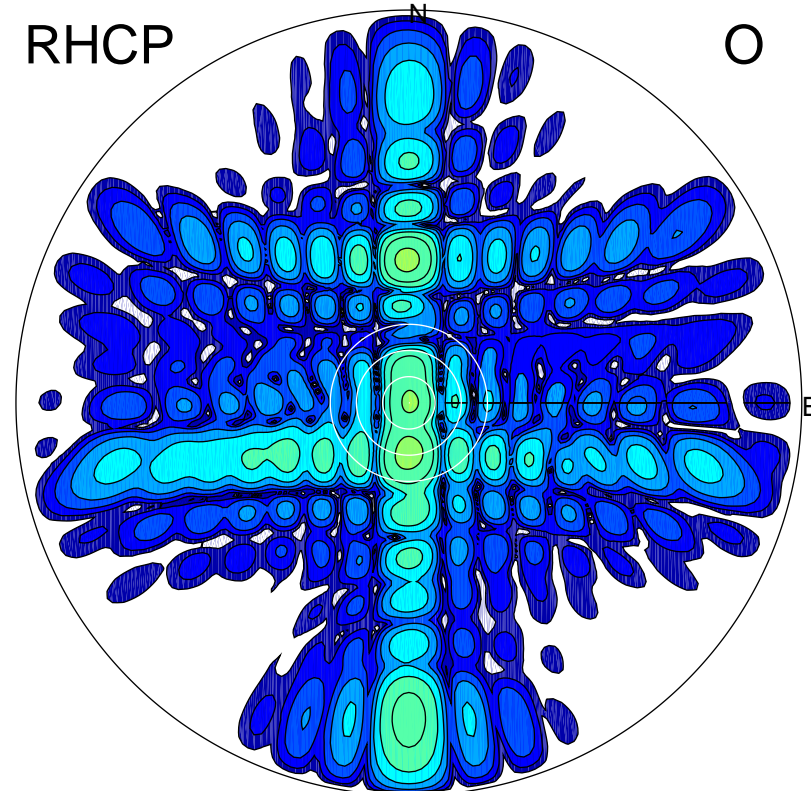
LHCP

X



RHCP

O



ERP 487.0 MW

Peak gain 28.1 dBi at Az 180 Zen 11
RHCP gain 12.1 dBi
N-S peak 28.1 dBi at Zen -11.2
N-S -3 dB beamwidth 6.4 deg.

ERP 12.3 MW

Peak gain 12.1 dBi at Az 179 Zen 11
LHCP gain 28.1 dBi
N-S peak 12.1 dBi at Zen -11.5
N-S -3 dB beamwidth 9.2 deg.