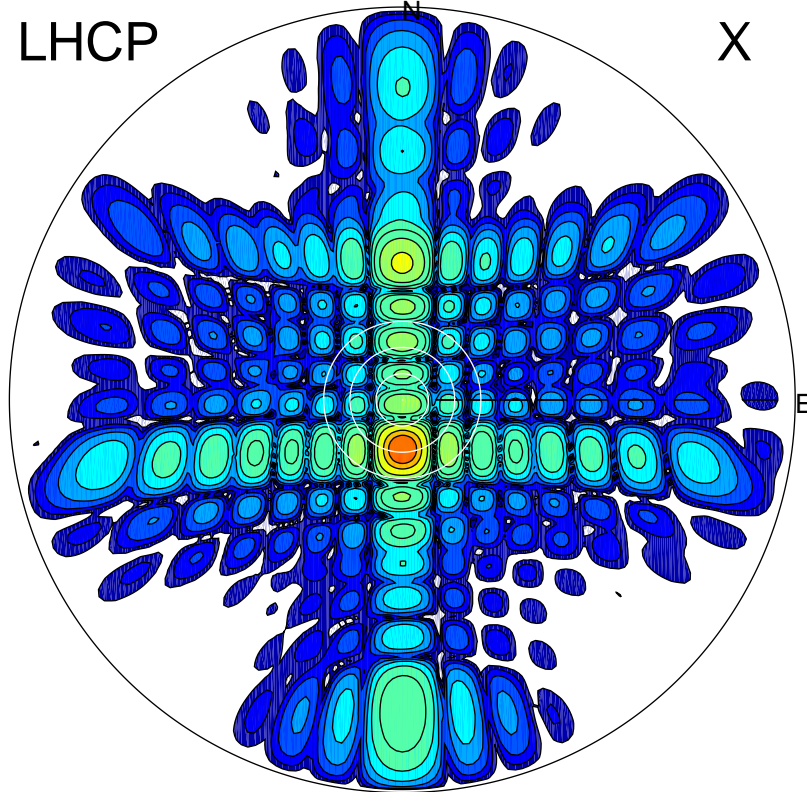


2017-11-07 11:25:00 A1 6.20000000 MHz 349.0 kW

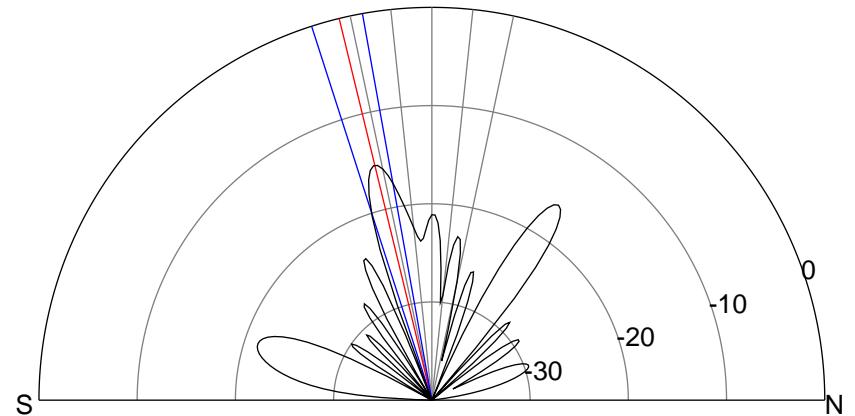
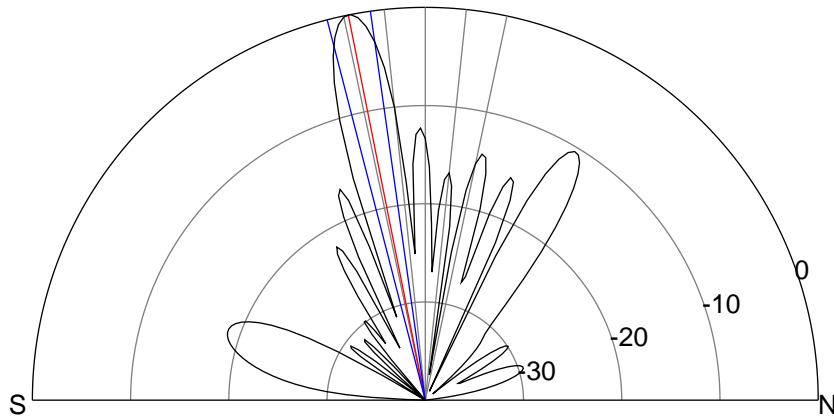
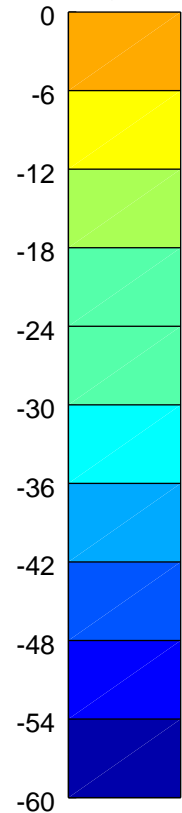
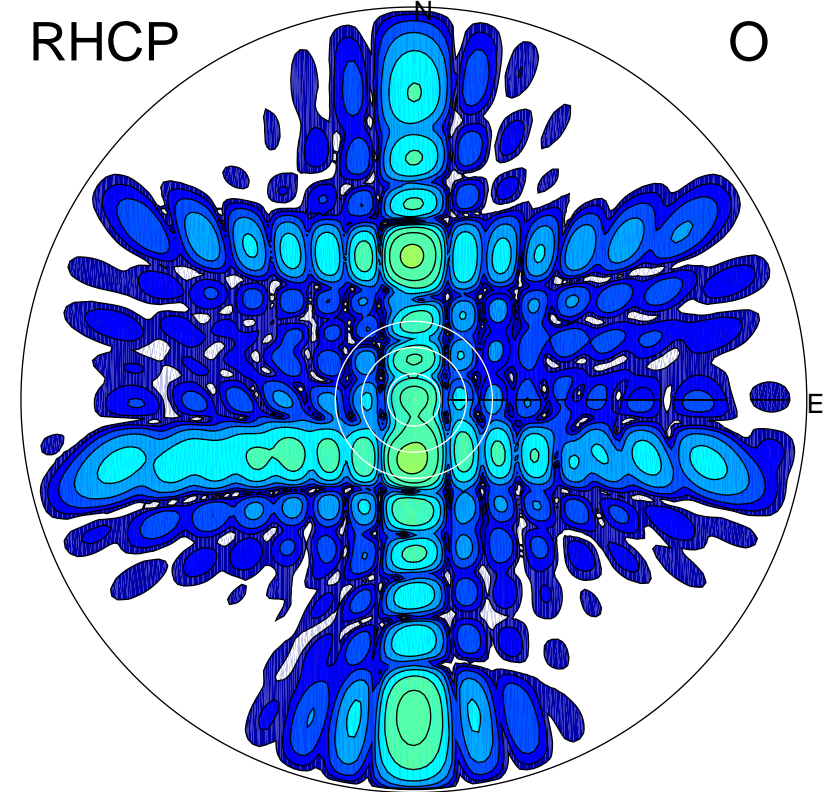
LHCP

X



RHCP

O



ERP 225.5 MW

Peak gain 28.1 dBi at Az 179 Zen 11
RHCP gain 11.4 dBi
N-S peak 28.1 dBi at Zen -11.3
N-S -3 dB beamwidth 6.4 deg.

ERP 6.6 MW

Peak gain 12.8 dBi at Az 182 Zen 14
LHCP gain 26.1 dBi
N-S peak 12.7 dBi at Zen -13.6
N-S -3 dB beamwidth 7.6 deg.