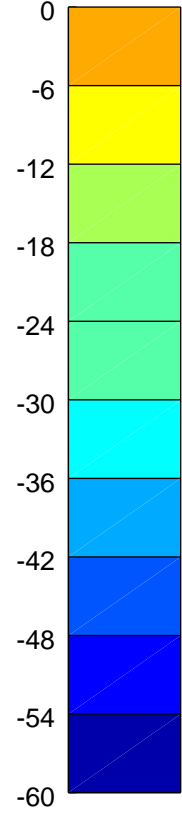
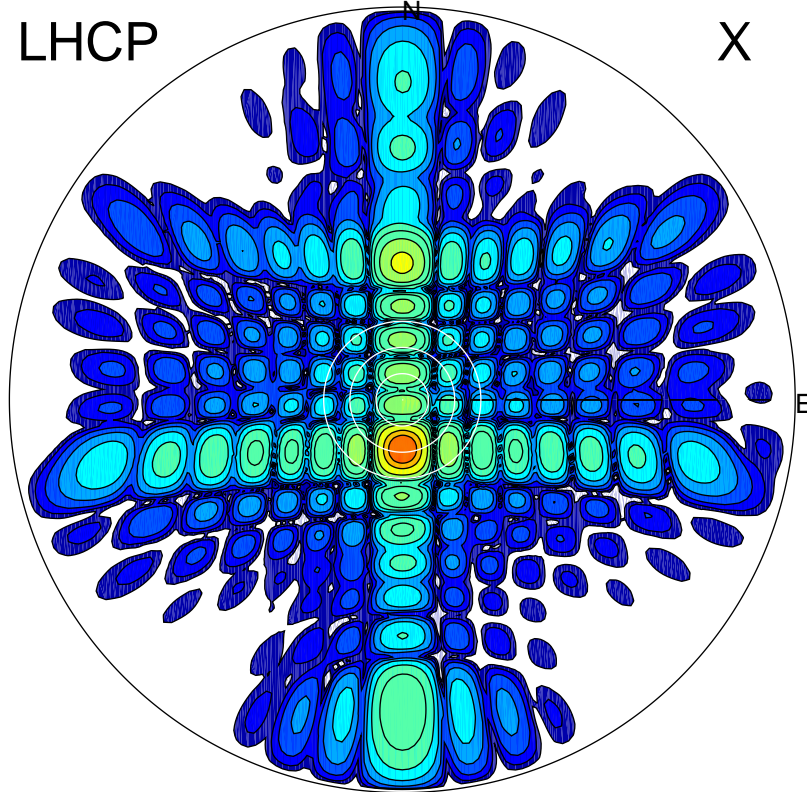


2017-11-07 11:19:00 A1 6.20000000 MHz 76.0 kW

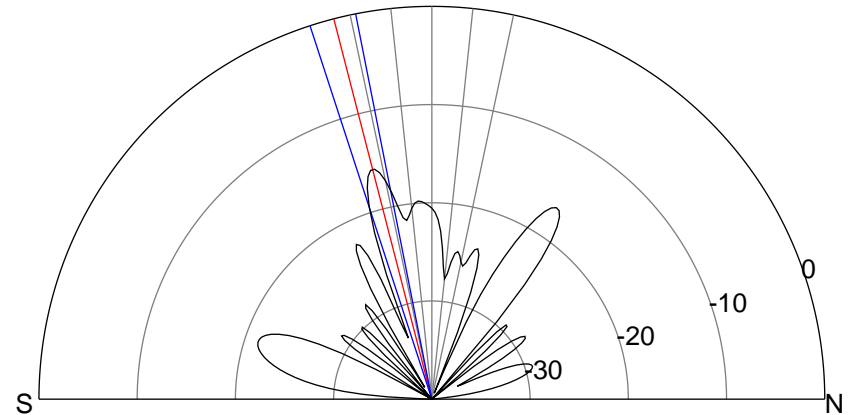
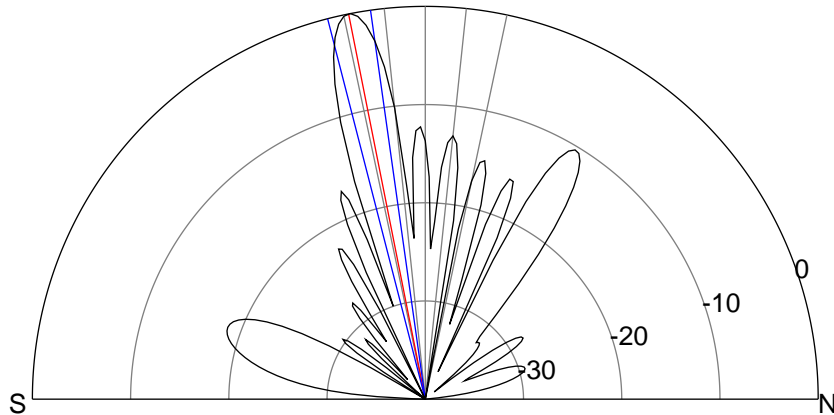
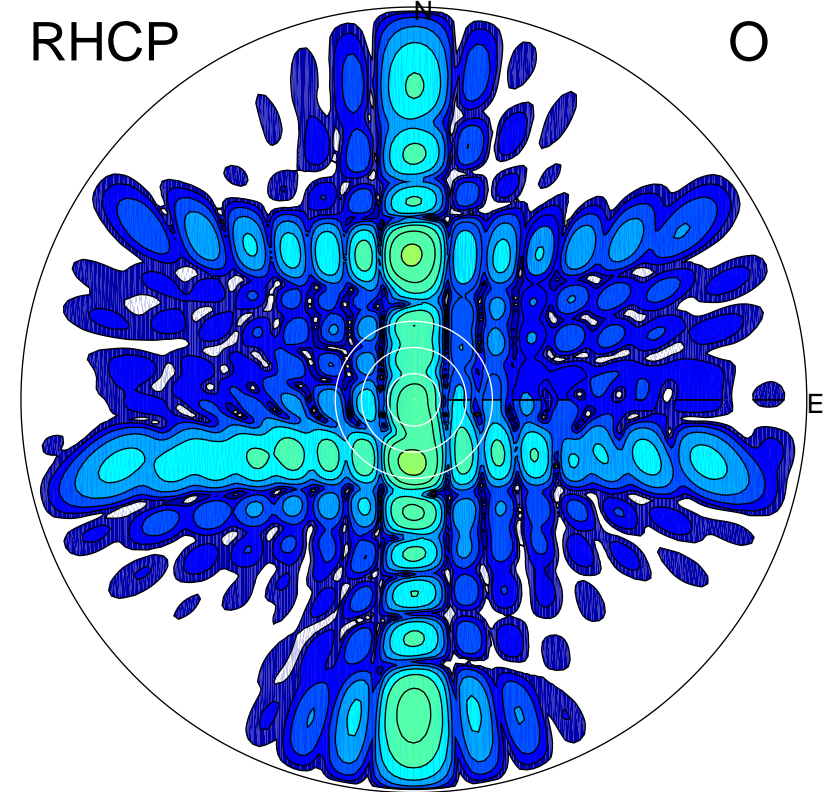
LHCP

X



RHCP

O



ERP 48.9 MW

Peak gain 28.1 dBi at Az 179 Zen 11
RHCP gain 9.5 dBi
N-S peak 28.1 dBi at Zen -11.3
N-S -3 dB beamwidth 6.4 deg.

ERP 1.3 MW

Peak gain 12.3 dBi at Az 182 Zen 14
LHCP gain 26.0 dBi
N-S peak 12.3 dBi at Zen -14.5
N-S -3 dB beamwidth 6.9 deg.