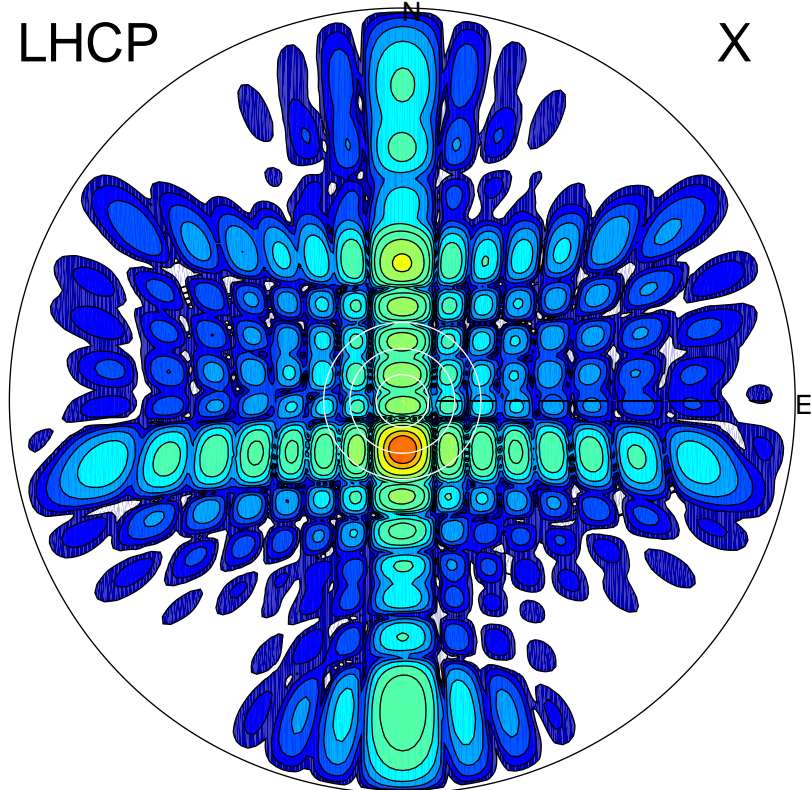


2017-11-07 11:16:00 A1 6.20000000 MHz 34.0 kW

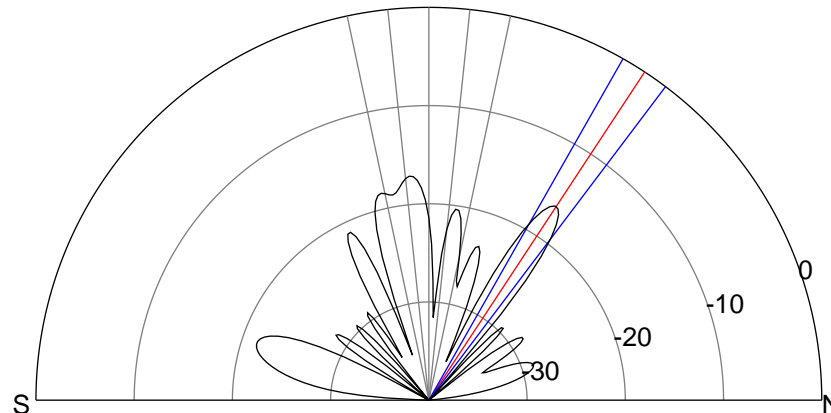
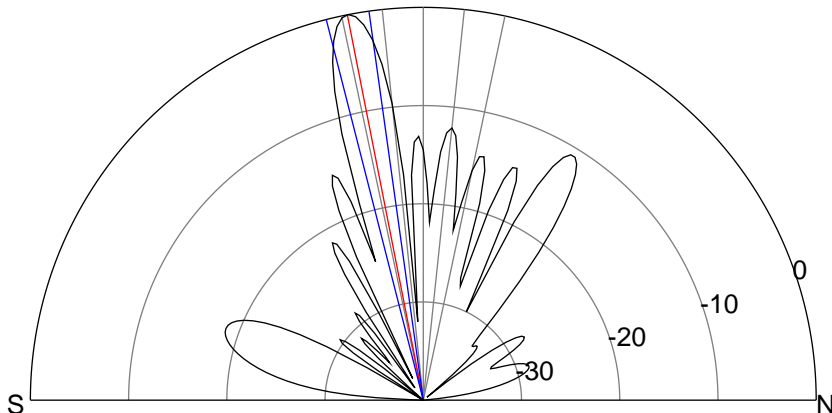
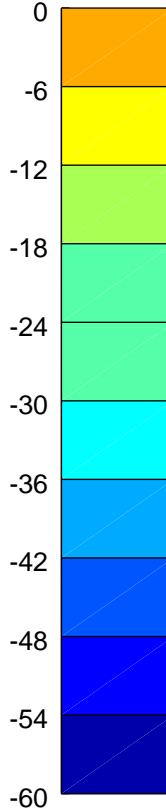
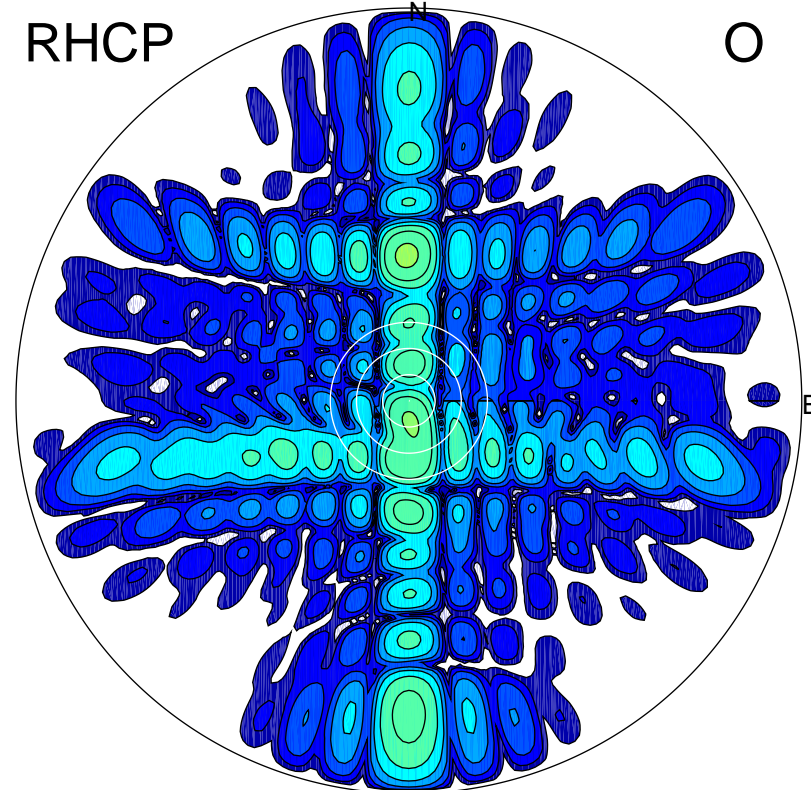
LHCP

X



RHCP

O



ERP 21.8 MW

Peak gain 28.1 dBi at Az 180 Zen 11
RHCP gain 9.4 dBi
N-S peak 28.1 dBi at Zen -11.1
N-S -3 dB beamwidth 6.3 deg.

ERP 0.5 MW

Peak gain 11.7 dBi at Az 359 Zen 33
LHCP gain 16.7 dBi
N-S peak 11.7 dBi at Zen 33.3
N-S -3 dB beamwidth 7.4 deg.