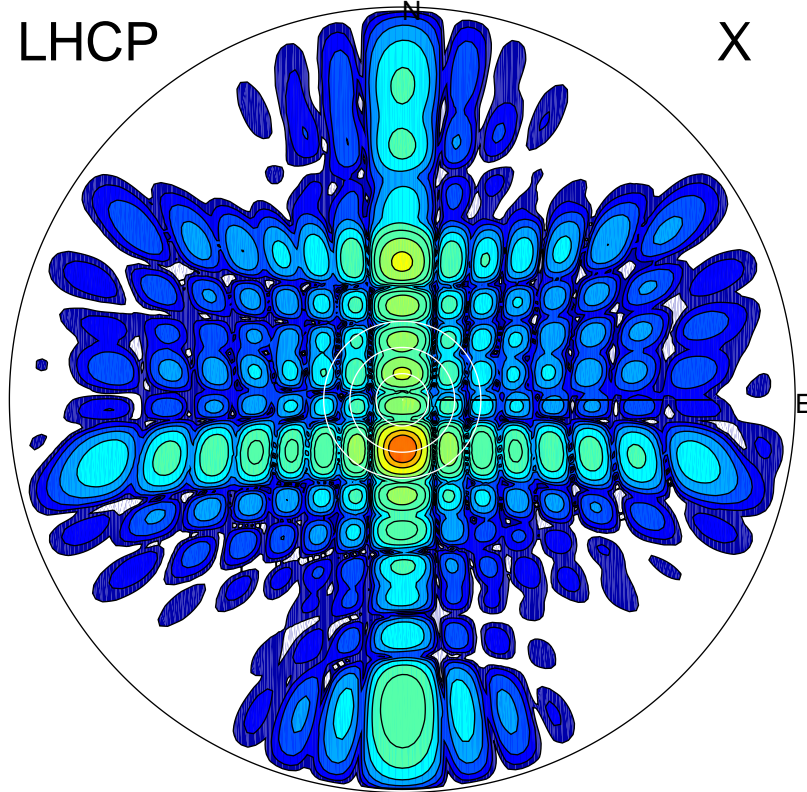


2017-11-07 11:13:00 A1 6.20000000 MHz 24.0 kW

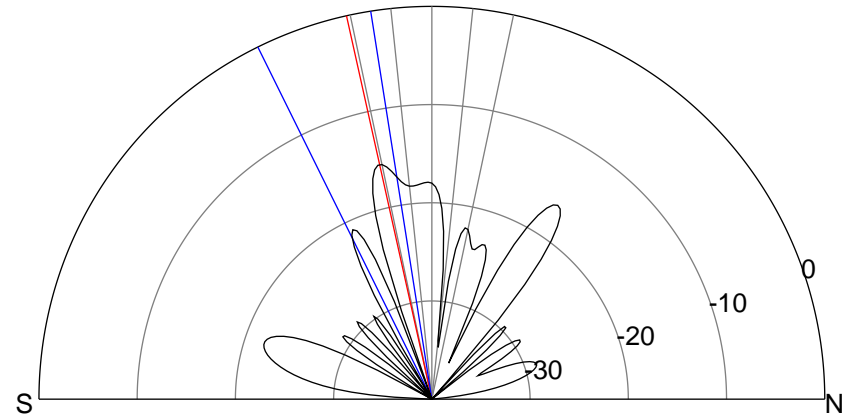
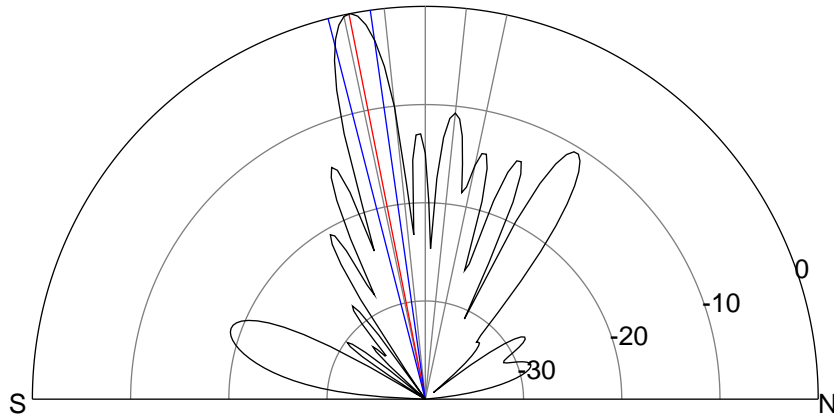
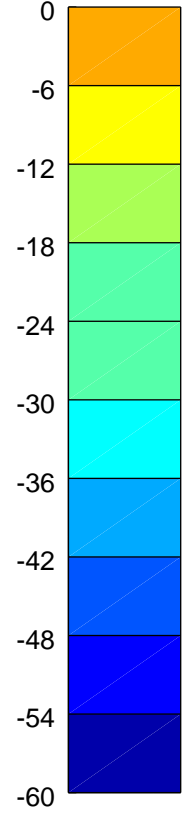
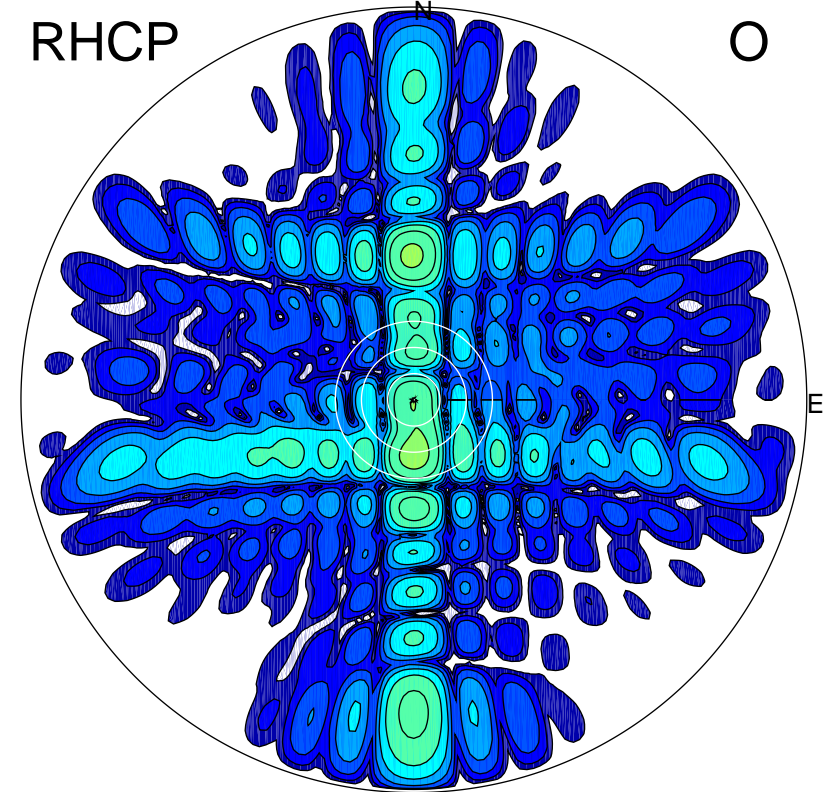
LHCP

X



RHCP

O



### ERP 15.0 MW

Peak gain 27.9 dBi at Az 180 Zen 11  
RHCP gain 12.0 dBi  
N-S peak 28.0 dBi at Zen -11.2  
N-S -3 dB beamwidth 6.3 deg.

### ERP 0.4 MW

Peak gain 12.4 dBi at Az 180 Zen 13  
LHCP gain 27.0 dBi  
N-S peak 12.4 dBi at Zen -12.5  
N-S -3 dB beamwidth 17.3 deg.