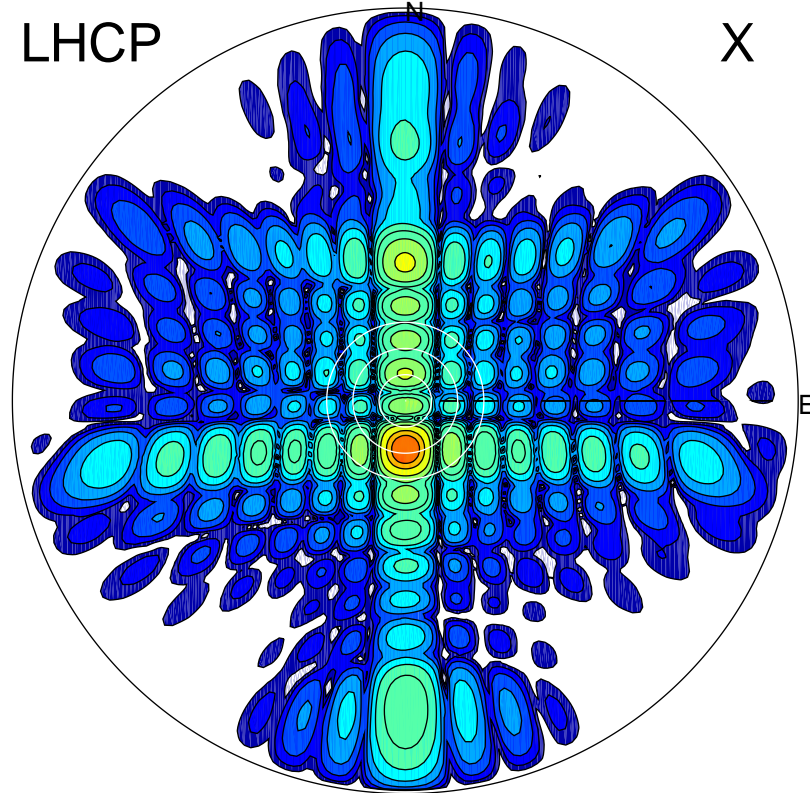


2017-11-07 11:10:00 A1 6.20000000 MHz 17.0 kW

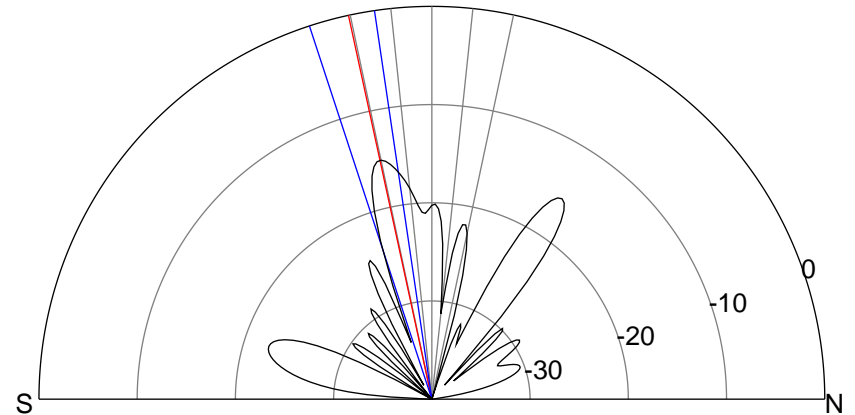
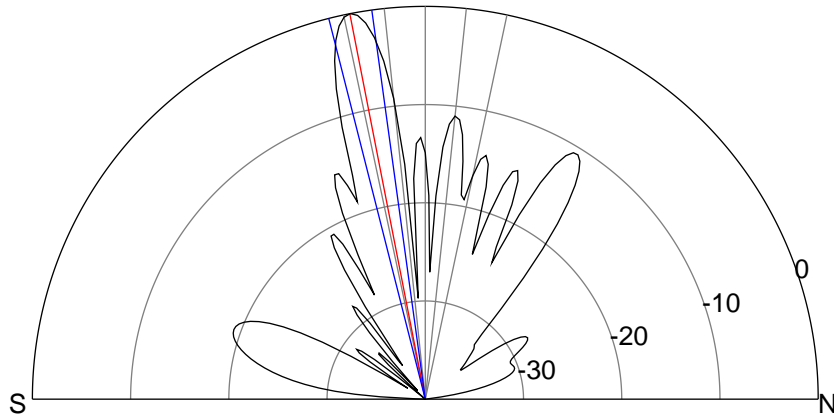
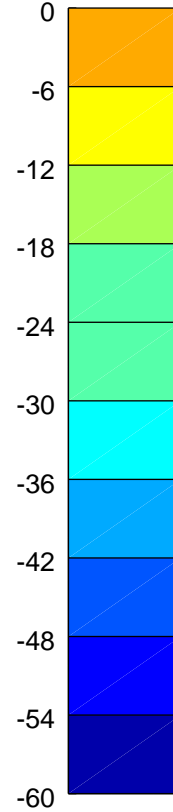
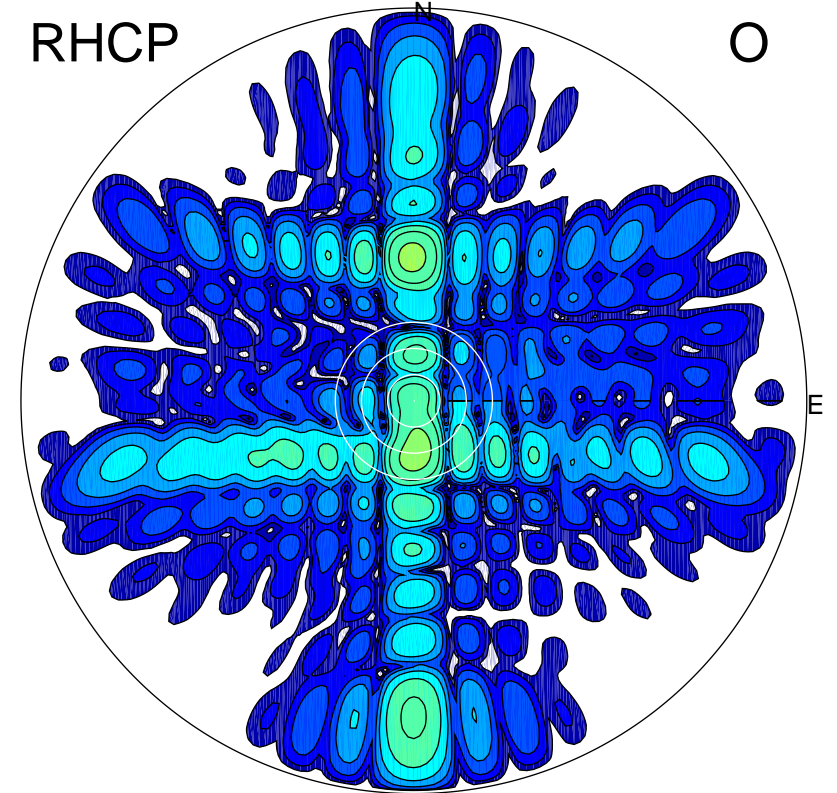
LHCP

X



RHCP

O



ERP 10.6 MW

Peak gain 28.0 dBi at Az 180 Zen 11
RHCP gain 12.6 dBi
N-S peak 28.0 dBi at Zen -11.1
N-S -3 dB beamwidth 6.4 deg.

ERP 0.3 MW

Peak gain 12.9 dBi at Az 178 Zen 12
LHCP gain 27.7 dBi
N-S peak 12.8 dBi at Zen -12.3
N-S -3 dB beamwidth 9.8 deg.