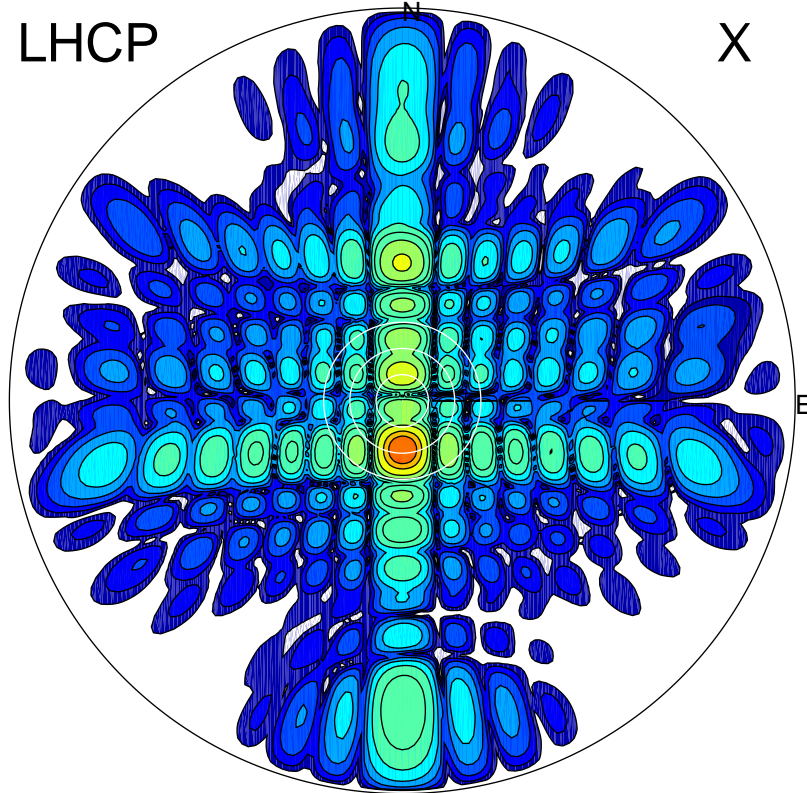


2017-11-07 11:07:00 A1 6.20000000 MHz 13.0 kW

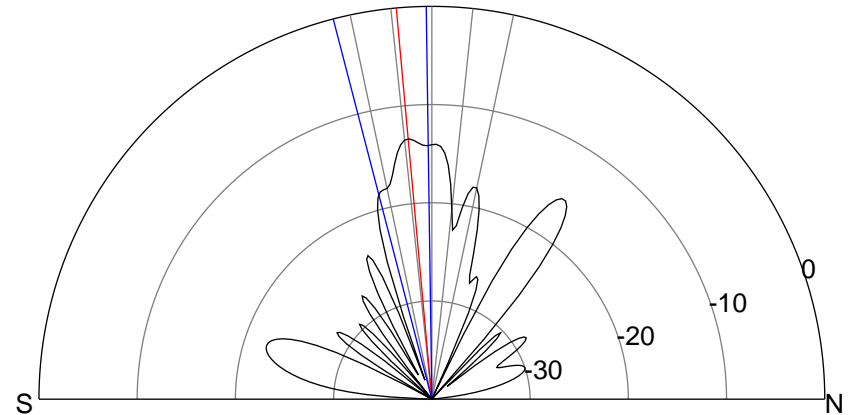
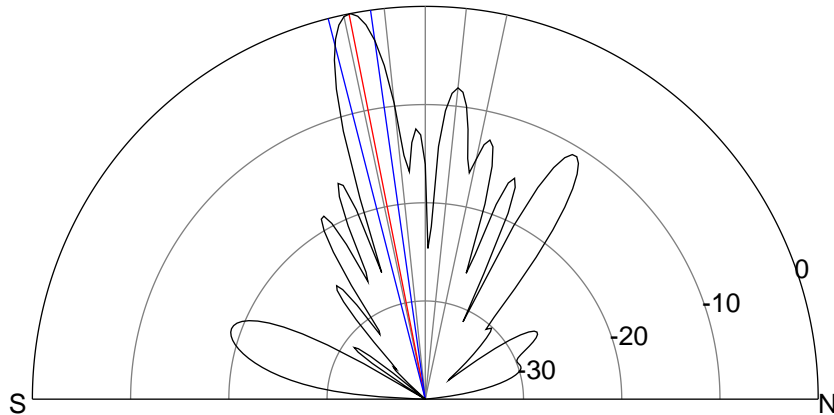
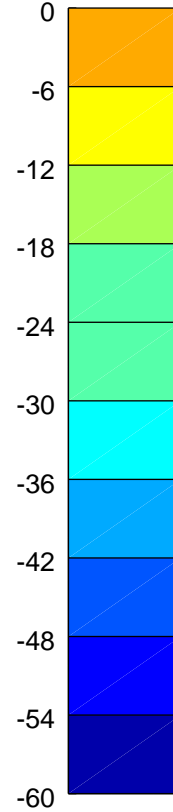
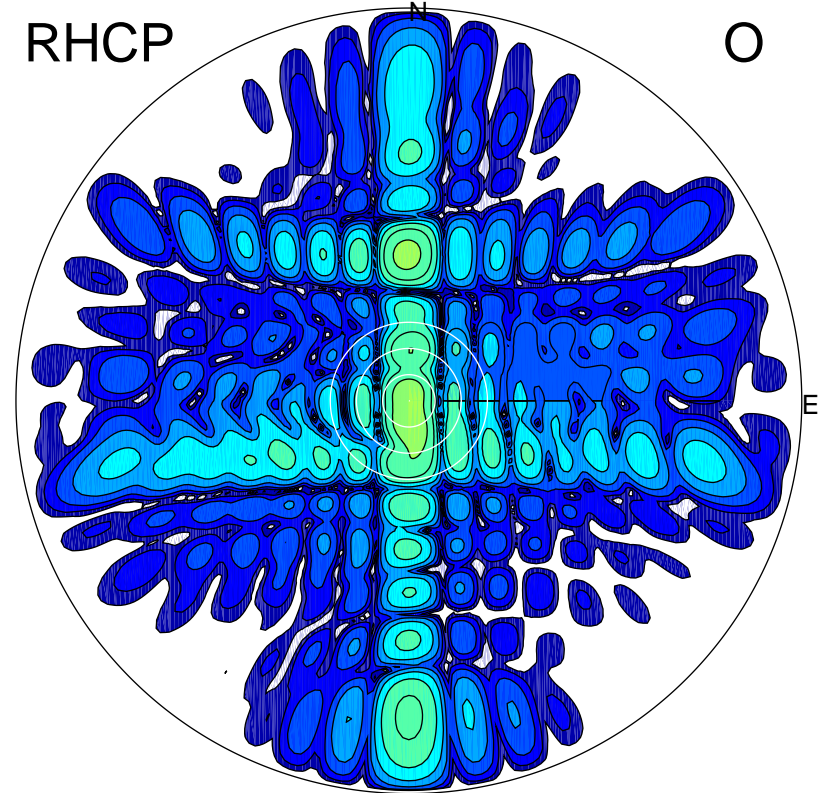
LHCP

X



RHCP

O



ERP 7.5 MW

Peak gain 27.6 dBi at Az 180 Zen 11
RHCP gain 9.9 dBi
N-S peak 27.6 dBi at Zen -11.2
N-S -3 dB beamwidth 6.3 deg.

ERP 0.3 MW

Peak gain 14.2 dBi at Az 178 Zen 5
LHCP gain 12.5 dBi
N-S peak 14.2 dBi at Zen -5.2
N-S -3 dB beamwidth 13.7 deg.