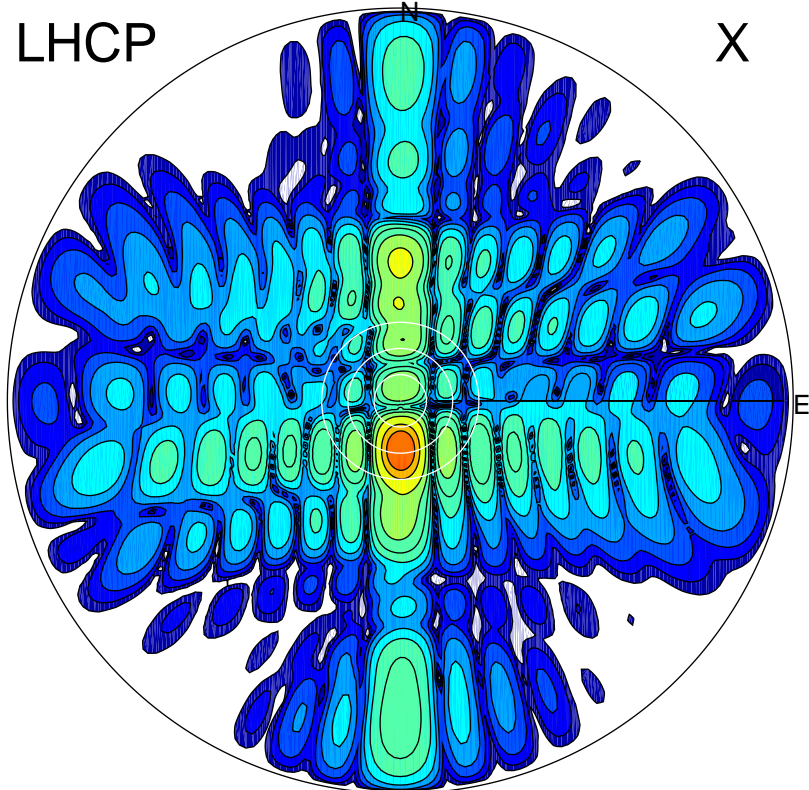


2017-11-07 11:03:00 A1 6.20000000 MHz 4.0 kW

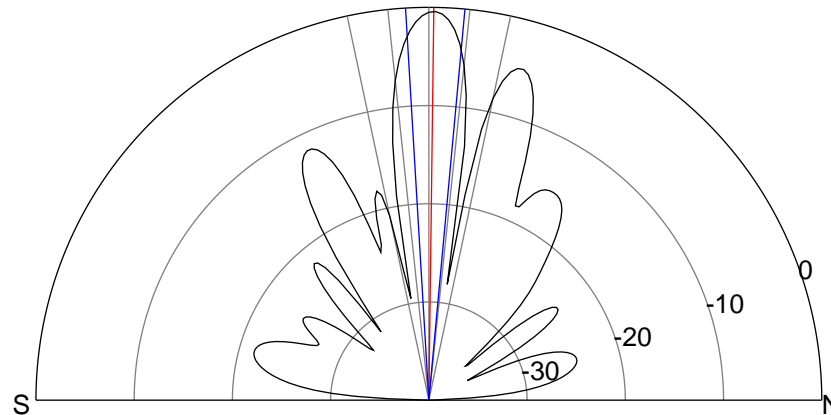
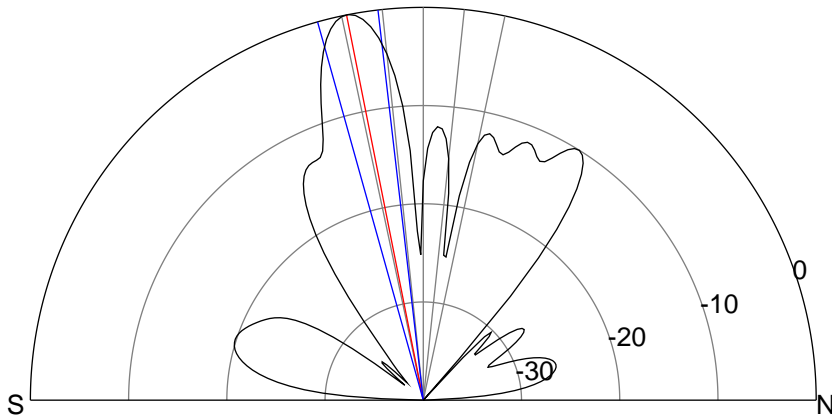
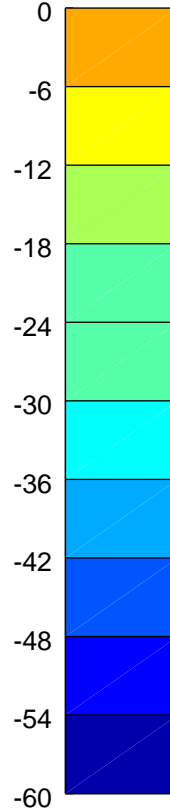
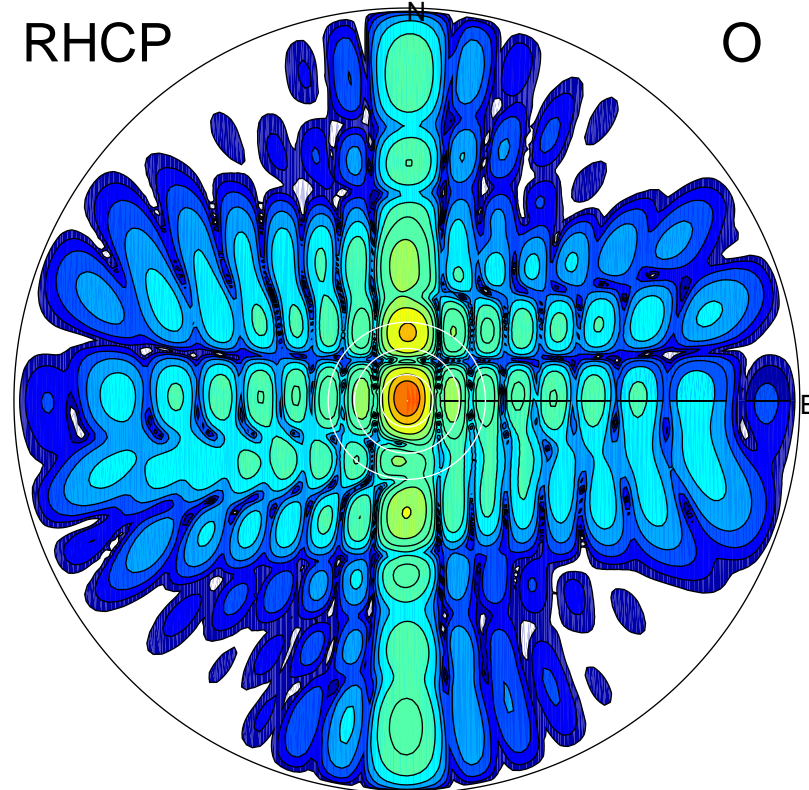
LHCP

X



RHCP

O



ERP 1.0 MW

Peak gain 23.8 dBi at Az 179 Zen 11
RHCP gain -3.2 dBi
N-S peak 23.8 dBi at Zen -11.3
N-S -3 dB beamwidth 9.0 deg.

ERP 0.9 MW

Peak gain 23.4 dBi at Az 1 Zen 1
LHCP gain 9.4 dBi
N-S peak 23.4 dBi at Zen 0.7
N-S -3 dB beamwidth 8.7 deg.