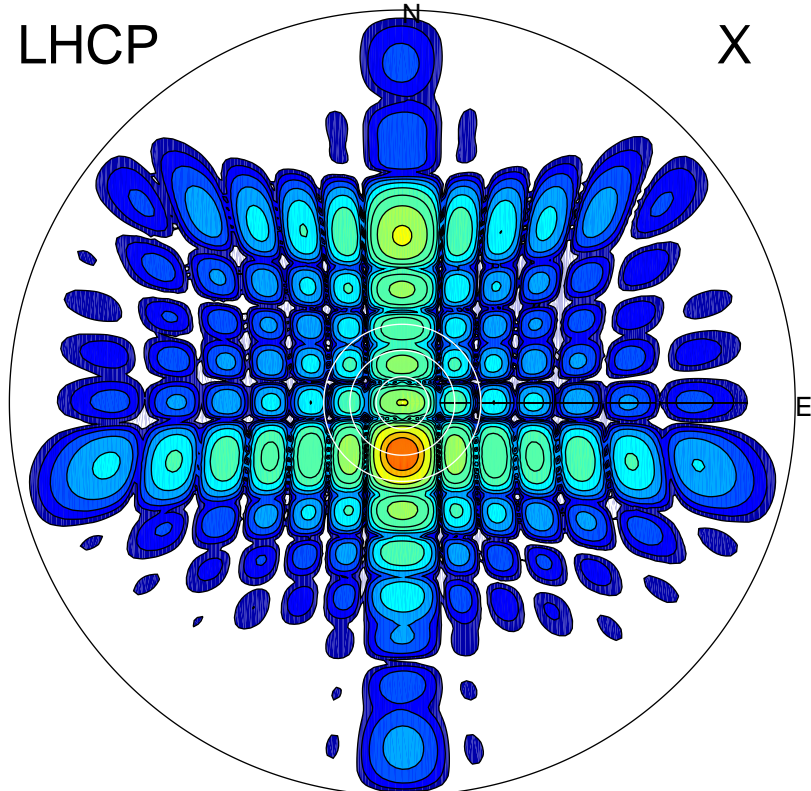


2017-11-06 11:30:10 A1 5.42300000 MHz 825.0 kW

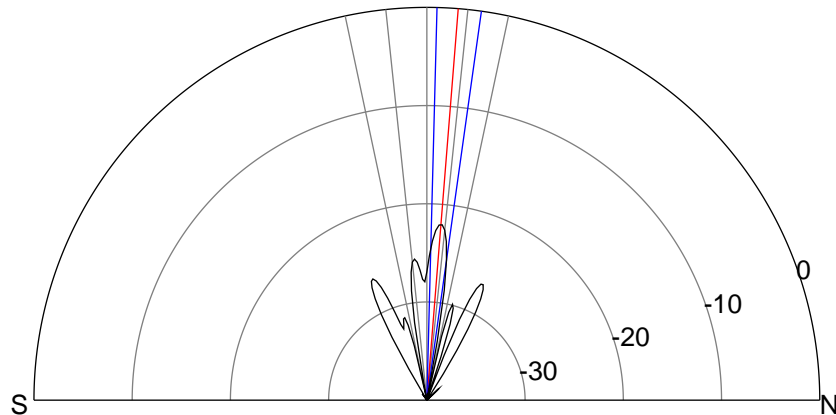
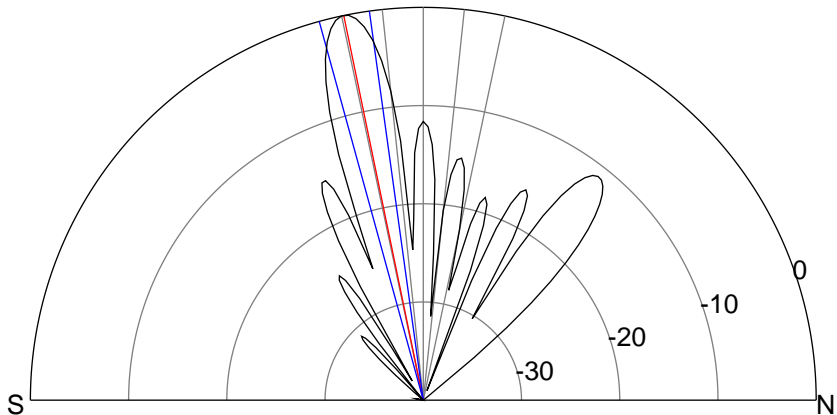
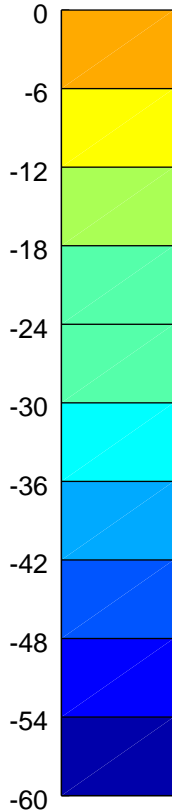
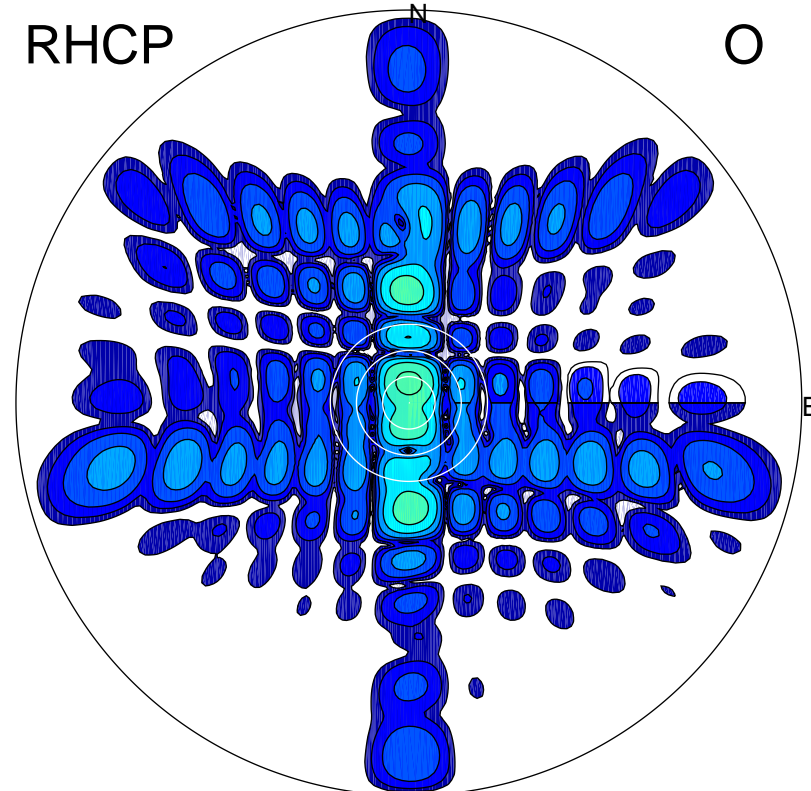
LHCP

X



RHCP

O



### ERP 452.2 MW

Peak gain 27.4 dBi at Az 180 Zen 12  
RHCP gain -12.0 dBi  
N-S peak 27.4 dBi at Zen -11.7  
N-S -3 dB beamwidth 7.5 deg.

### ERP 2.8 MW

Peak gain 5.3 dBi at Az 0 Zen 5  
LHCP gain -4.0 dBi  
N-S peak 5.4 dBi at Zen 4.6  
N-S -3 dB beamwidth 6.5 deg.