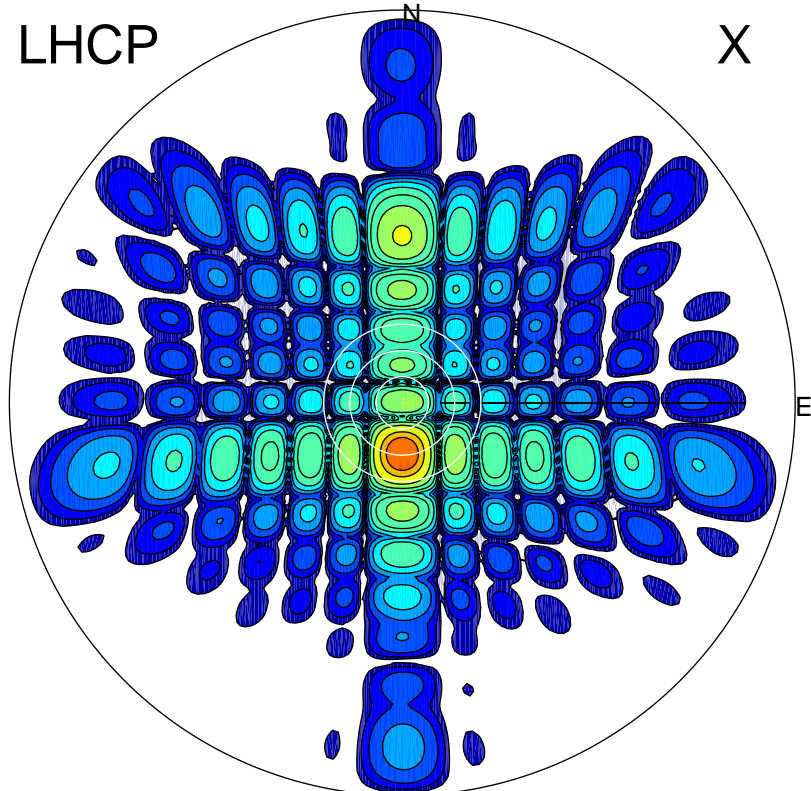


2017-11-06 11:01:00 A1 5.42300000 MHz 831.0 kW

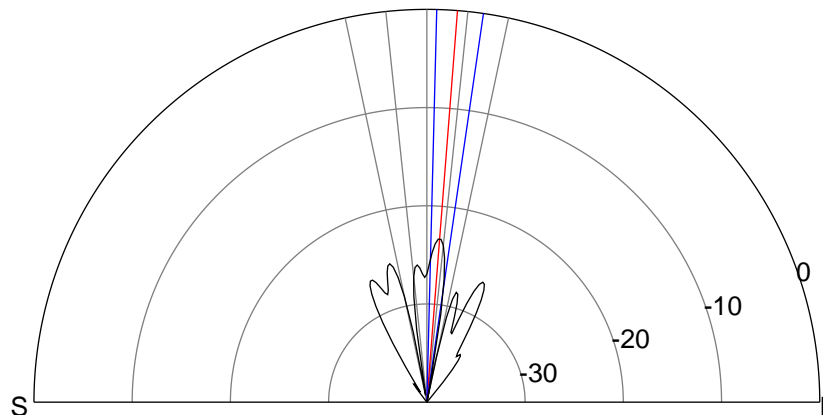
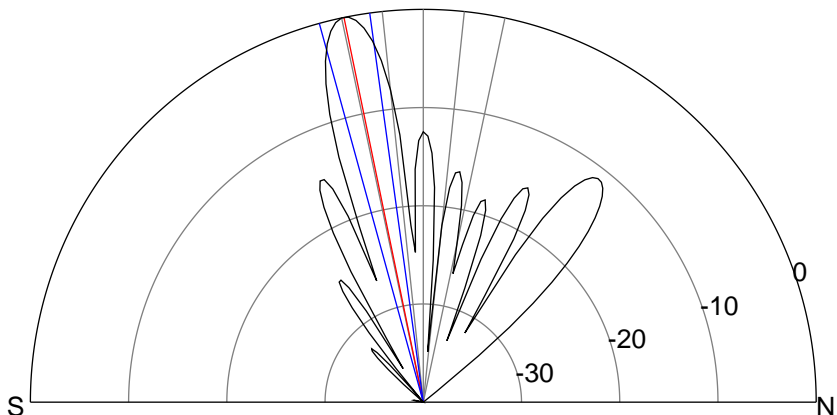
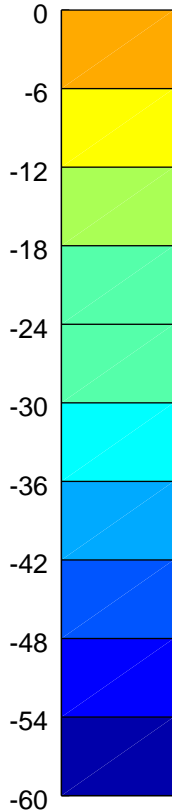
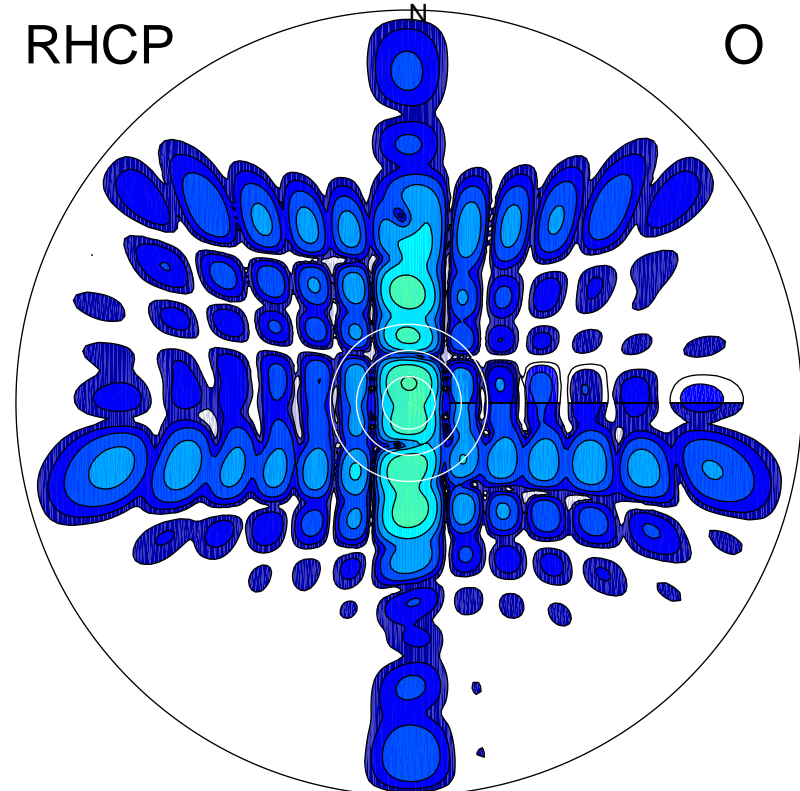
LHCP

X



RHCP

O



### ERP 455.0 MW

Peak gain 27.4 dBi at Az 180 Zen 12  
RHCP gain -1.6 dBi  
N-S peak 27.4 dBi at Zen -11.6  
N-S -3 dB beamwidth 7.5 deg.

### ERP 2.1 MW

Peak gain 4.0 dBi at Az 0 Zen 4  
LHCP gain 1.9 dBi  
N-S peak 4.1 dBi at Zen 4.5  
N-S -3 dB beamwidth 6.8 deg.