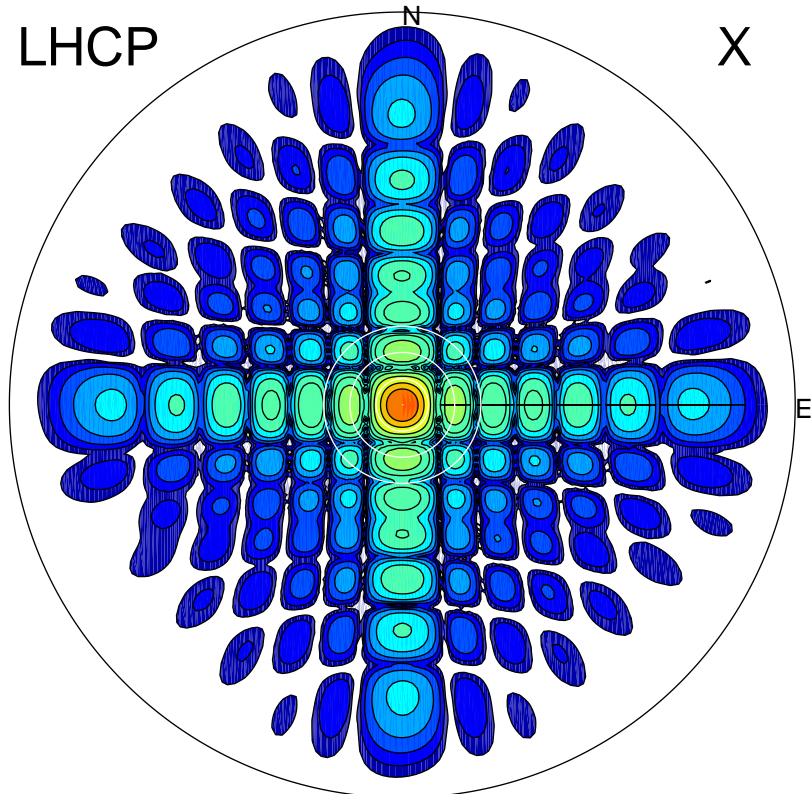
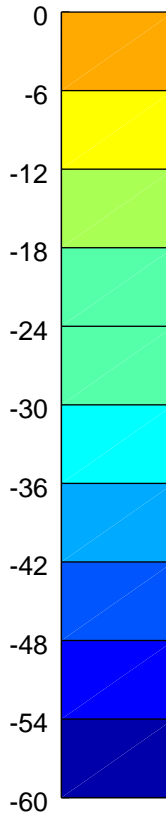


2017-11-06 10:37:45 A1 5.42300000 MHz 841.0 kW

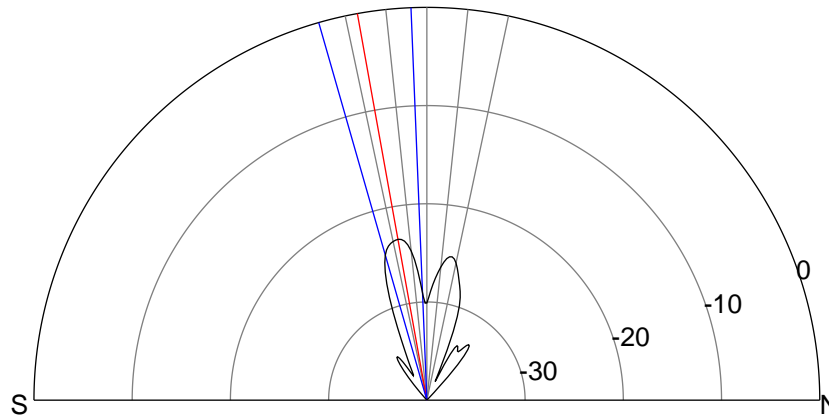
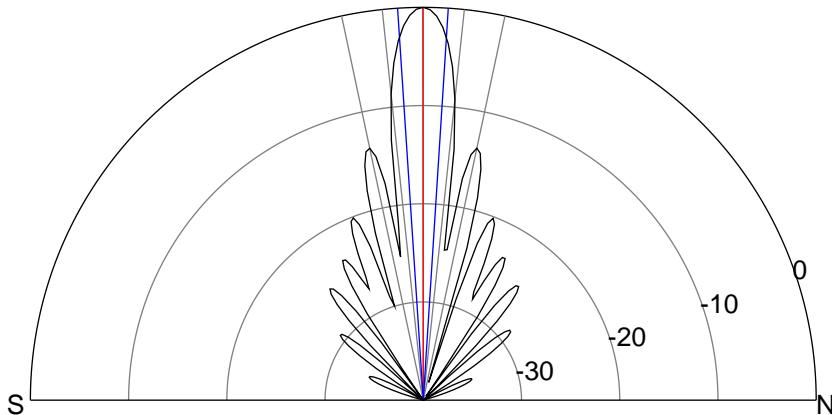
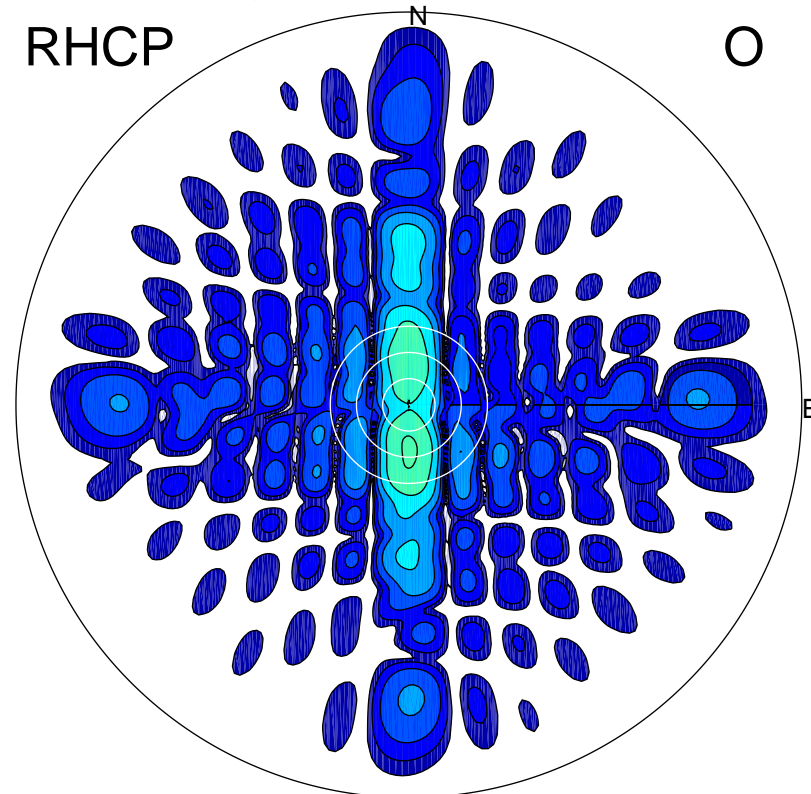
LHCP

X



RHCP

O



### ERP 511.4 MW

Peak gain 27.8 dBi at Az 7 Zen 0  
RHCP gain -2.3 dBi  
N-S peak 27.8 dBi at Zen -0.1  
N-S -3 dB beamwidth 7.4 deg.

### ERP 2.4 MW

Peak gain 4.5 dBi at Az 180 Zen 10  
LHCP gain 10.2 dBi  
N-S peak 4.5 dBi at Zen -10.2  
N-S -3 dB beamwidth 13.7 deg.