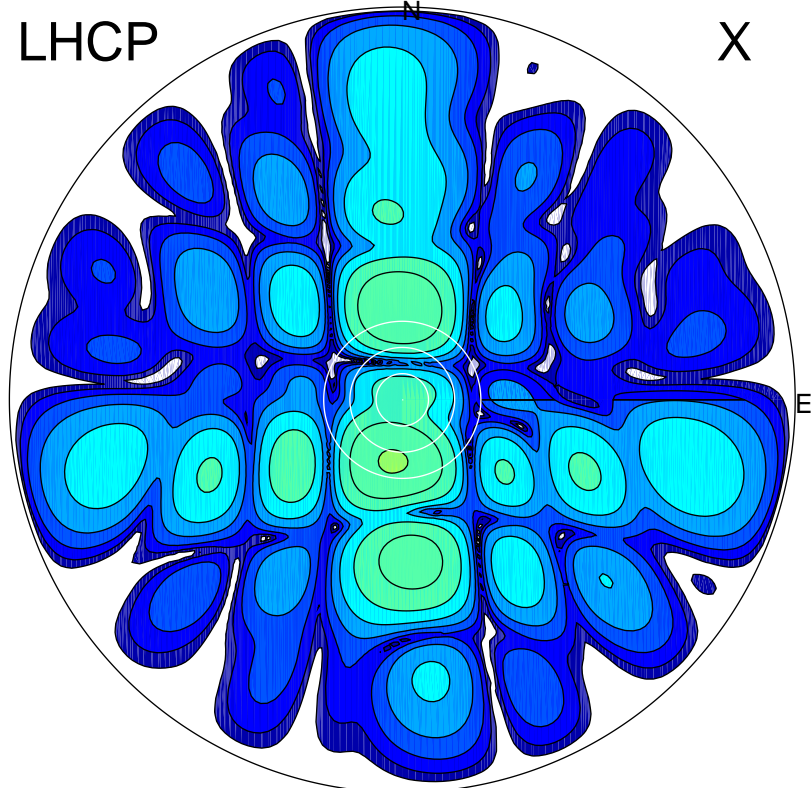


2017-10-24 13:40:55 A2 4.04000000 MHz 718.0 kW

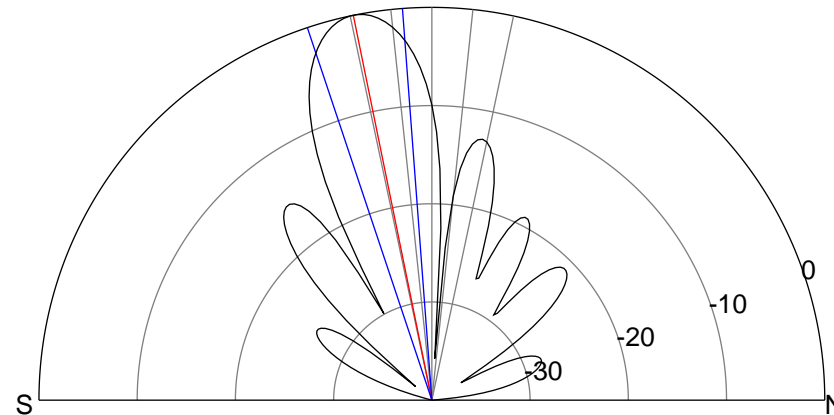
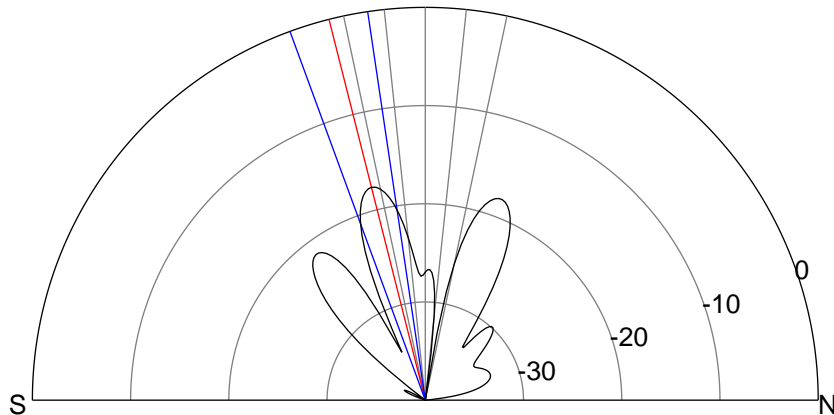
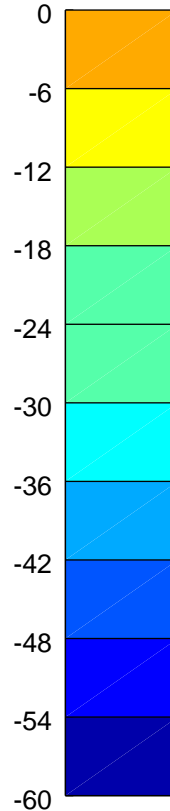
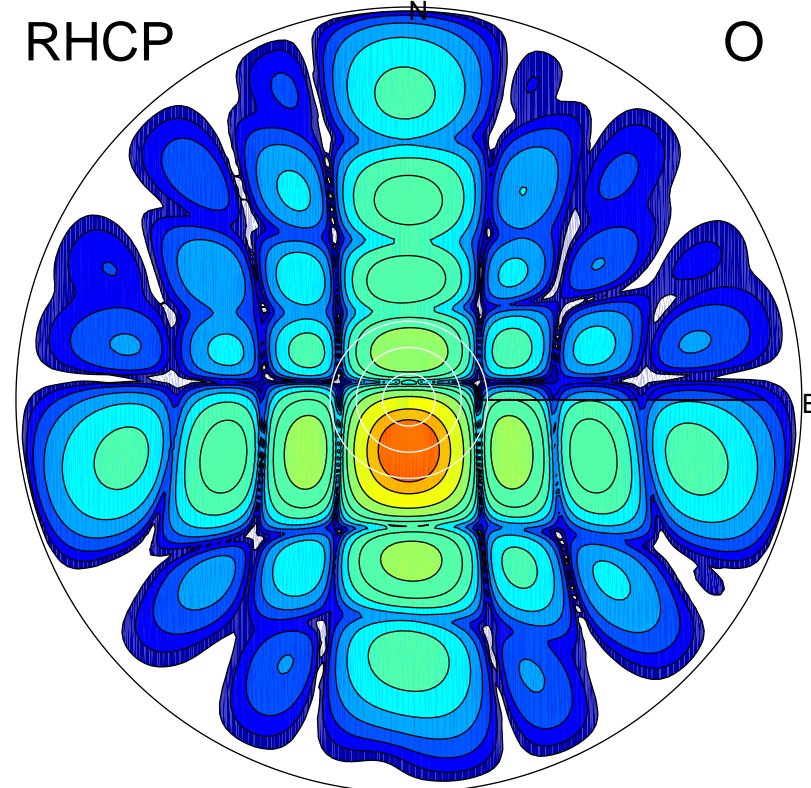
LHCP

X



RHCP

O



### ERP 2.2 MW

Peak gain 4.8 dBi at Az 188 Zen 14  
RHCP gain 21.7 dBi  
N-S peak 4.6 dBi at Zen -14.2  
N-S -3 dB beamwidth 11.7 deg.

### ERP 120.3 MW

Peak gain 22.2 dBi at Az 179 Zen 12  
LHCP gain 4.2 dBi  
N-S peak 22.3 dBi at Zen -11.5  
N-S -3 dB beamwidth 14.2 deg.