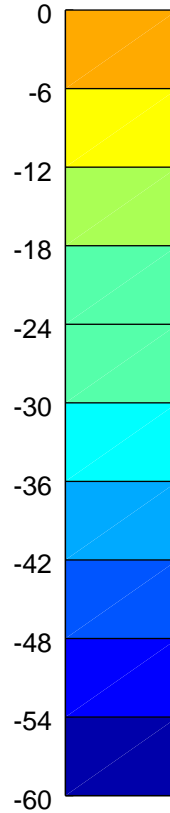
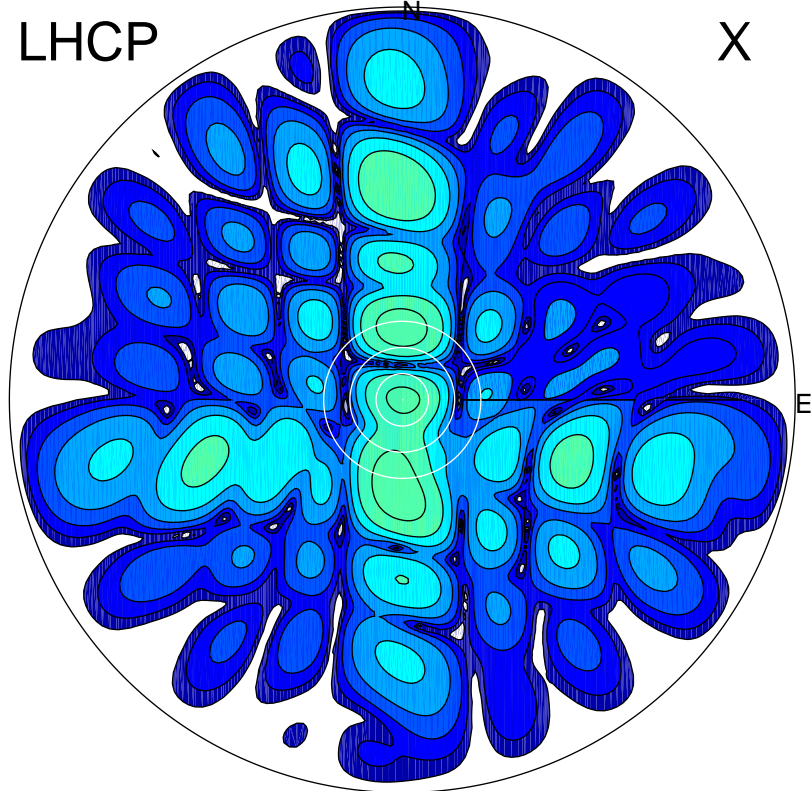


2017-10-24 12:50:00 A2 4.91280000 MHz 777.0 kW

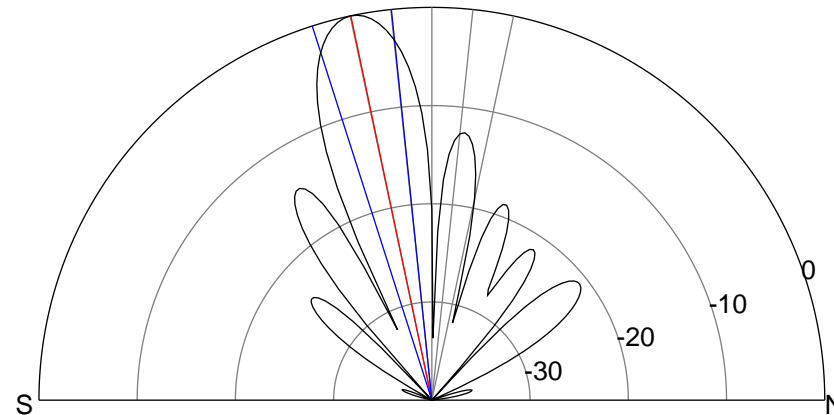
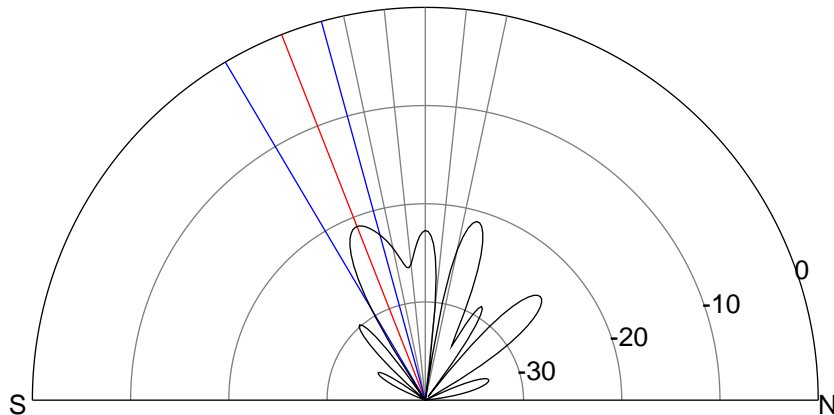
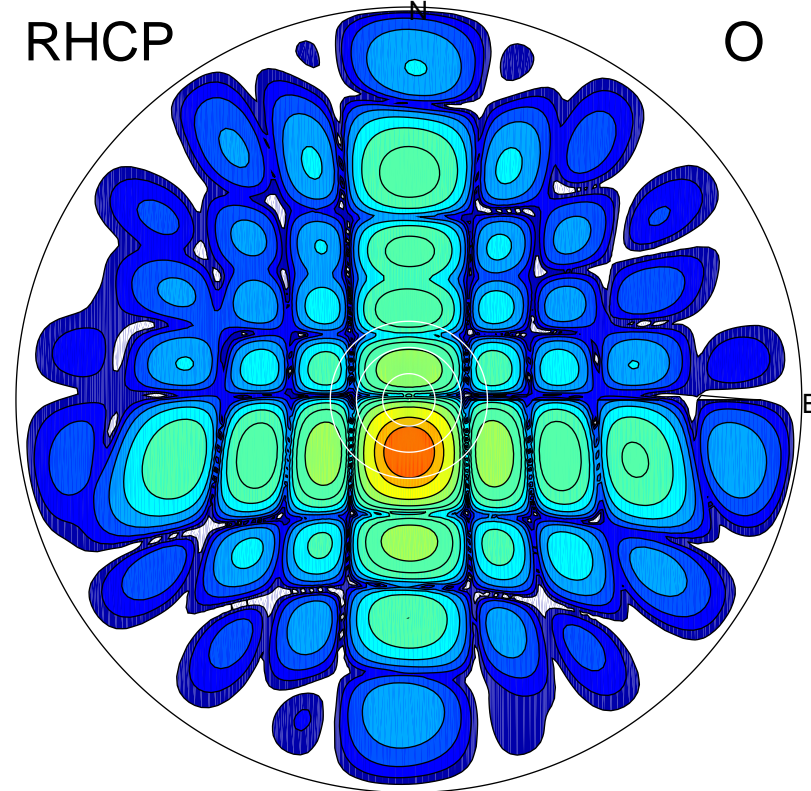
LHCP

X



RHCP

O



### ERP 1.5 MW

Peak gain 2.9 dBi at Az 183 Zen 21  
RHCP gain 16.2 dBi  
N-S peak 2.8 dBi at Zen -21.5  
N-S -3 dB beamwidth 15.3 deg.

### ERP 187.0 MW

Peak gain 23.8 dBi at Az 179 Zen 12  
LHCP gain -0.5 dBi  
N-S peak 23.8 dBi at Zen -11.9  
N-S -3 dB beamwidth 11.8 deg.