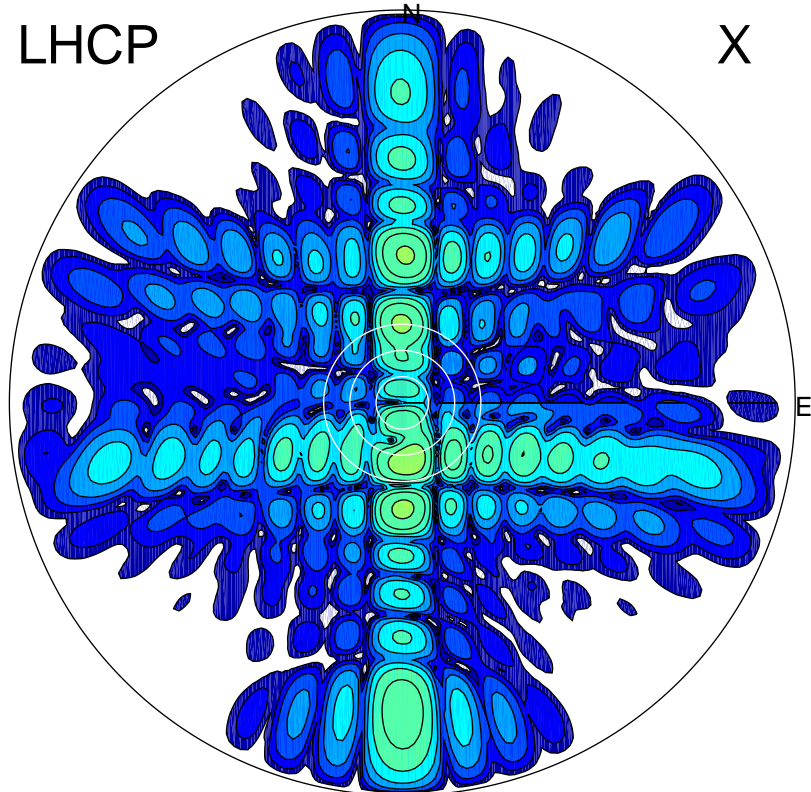


2017-10-24 10:18:00 A1 6.24000000 MHz 786.0 kW

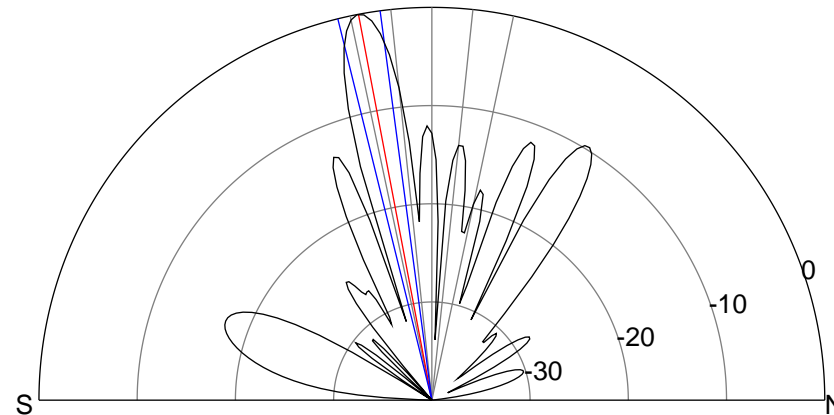
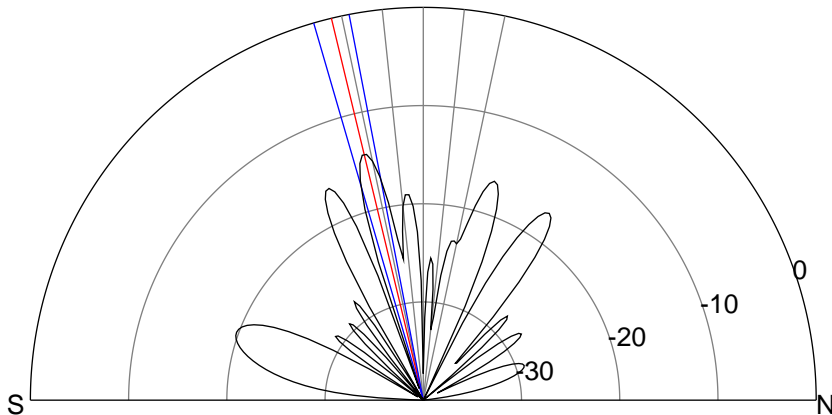
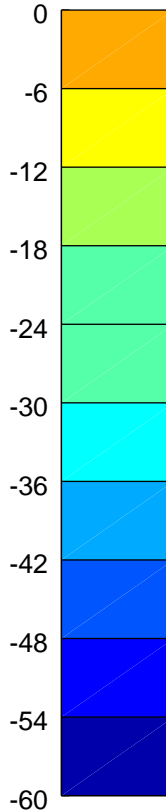
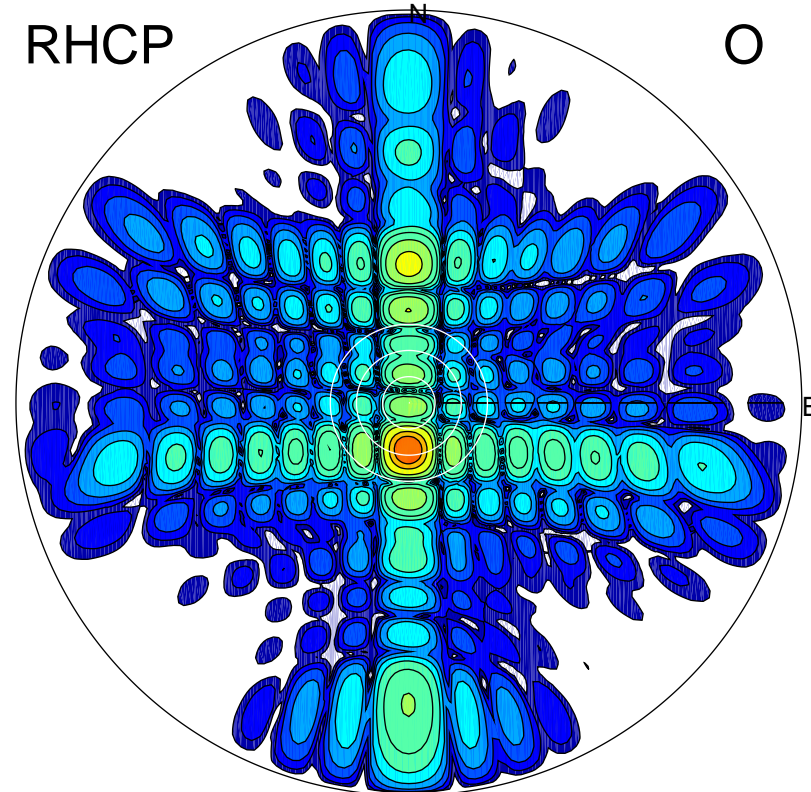
LHCP

X



RHCP

O



ERP 20.2 MW

Peak gain 14.1 dBi at Az 173 Zen 13
RHCP gain 25.7 dBi
N-S peak 13.6 dBi at Zen -13.5
N-S -3 dB beamwidth 5.3 deg.

ERP 475.5 MW

Peak gain 27.8 dBi at Az 181 Zen 11
LHCP gain 10.8 dBi
N-S peak 27.8 dBi at Zen -10.8
N-S -3 dB beamwidth 6.3 deg.