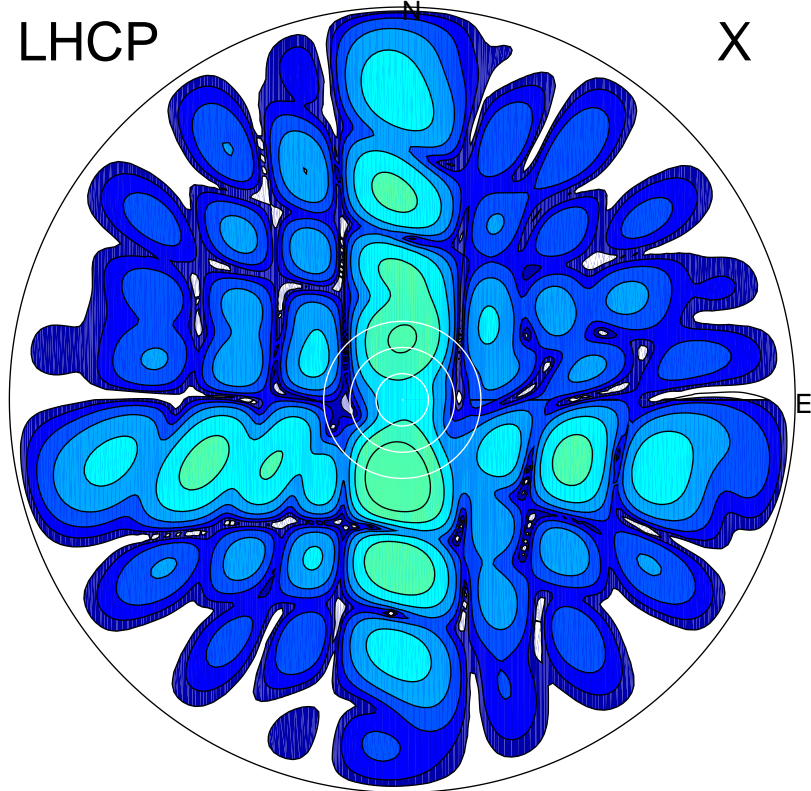


2017-10-23 13:36:00 A2 4.94000000 MHz 834.0 kW

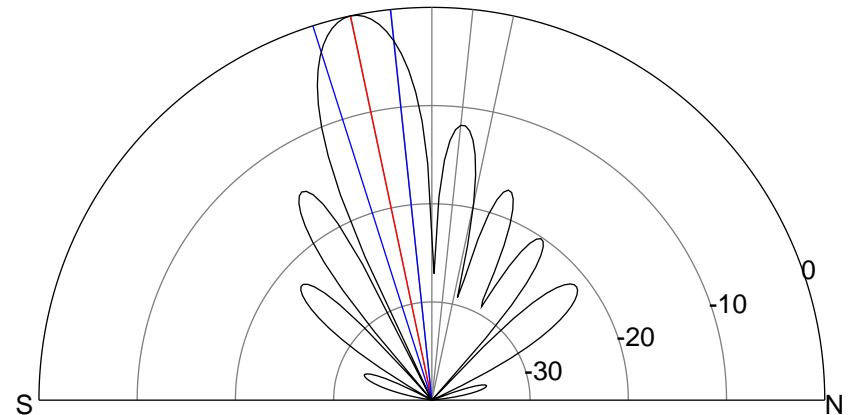
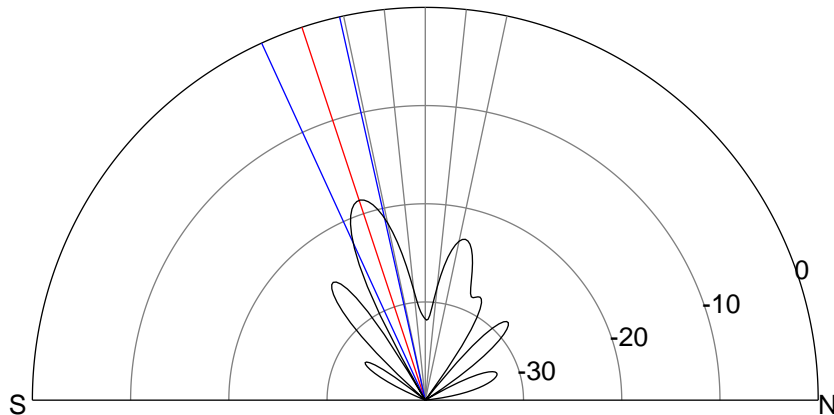
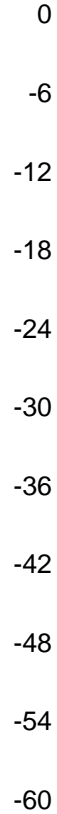
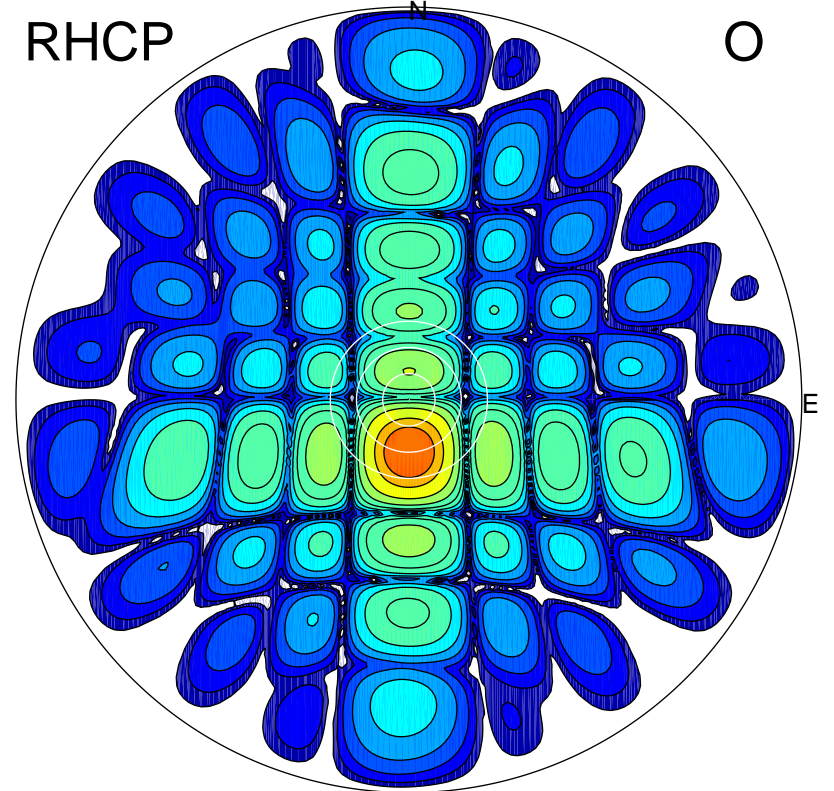
LHCP

X



RHCP

O



ERP 3.0 MW

Peak gain 5.5 dBi at Az 184 Zen 18
RHCP gain 20.6 dBi
N-S peak 5.3 dBi at Zen -18.3
N-S -3 dB beamwidth 12.0 deg.

ERP 203.8 MW

Peak gain 23.9 dBi at Az 180 Zen 12
LHCP gain 2.3 dBi
N-S peak 23.9 dBi at Zen -11.9
N-S -3 dB beamwidth 11.6 deg.