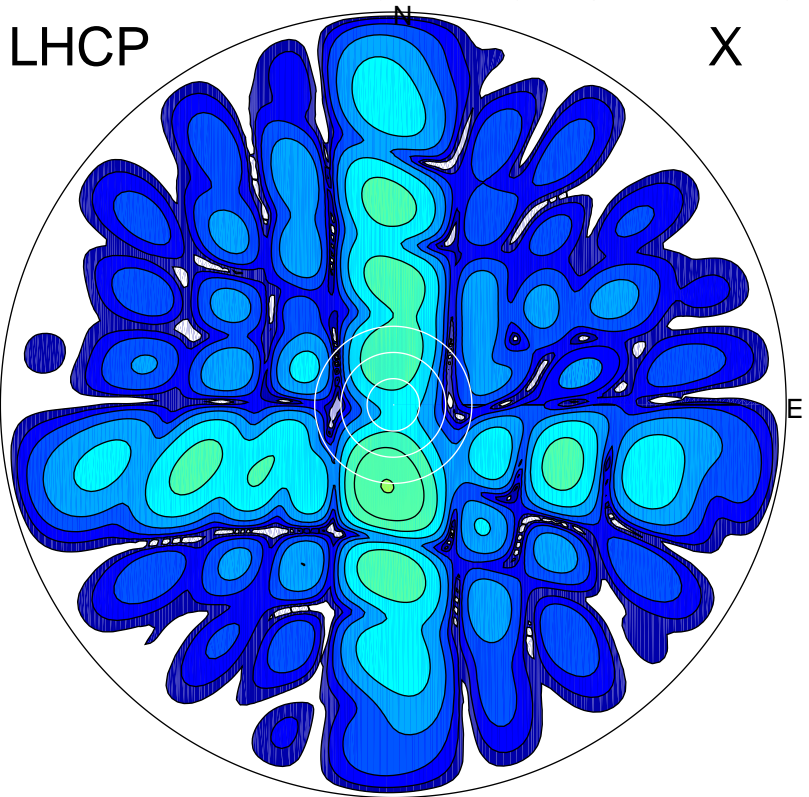


2017-10-23 11:12:00 A2 4.94000000 MHz 800.0 kW

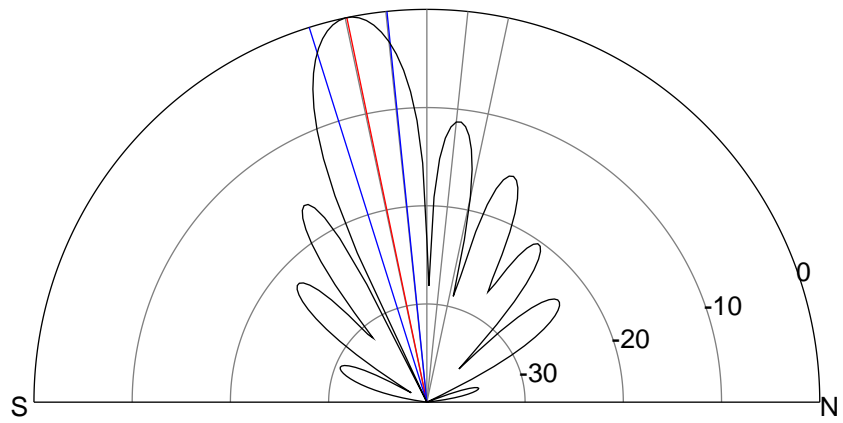
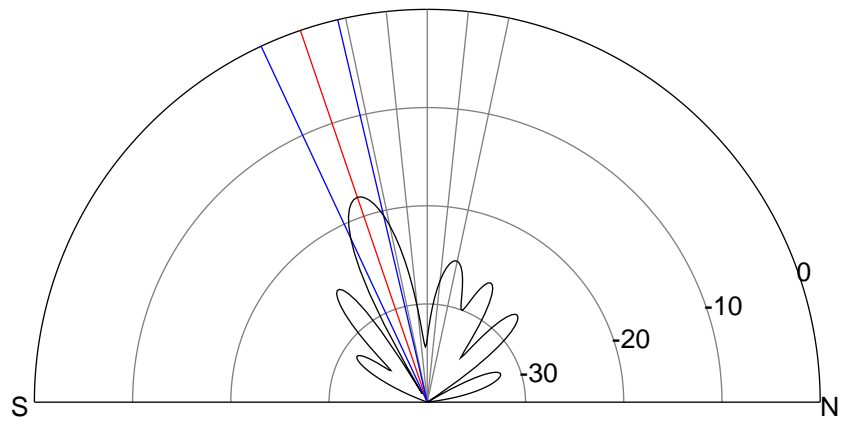
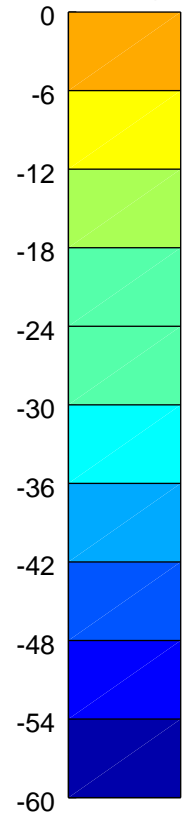
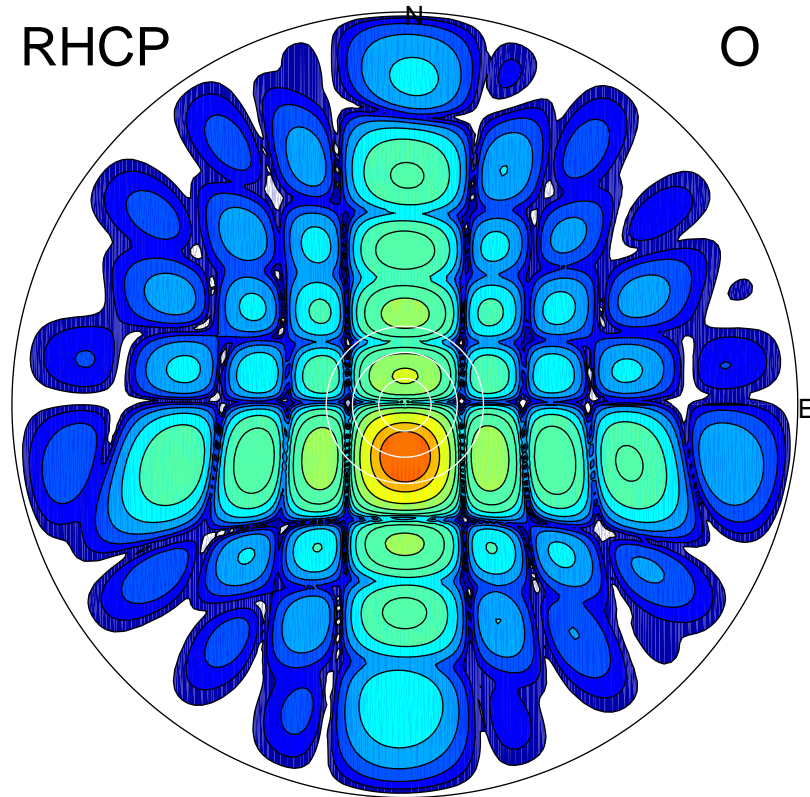
LHCP

X



RHCP

O



ERP 3.2 MW

Peak gain 6.0 dBi at Az 184 Zen 19
RHCP gain 19.2 dBi
N-S peak 5.9 dBi at Zen -18.8
N-S -3 dB beamwidth 11.8 deg.

ERP 193.8 MW

Peak gain 23.8 dBi at Az 179 Zen 12
LHCP gain 2.2 dBi
N-S peak 23.8 dBi at Zen -11.8
N-S -3 dB beamwidth 11.6 deg.