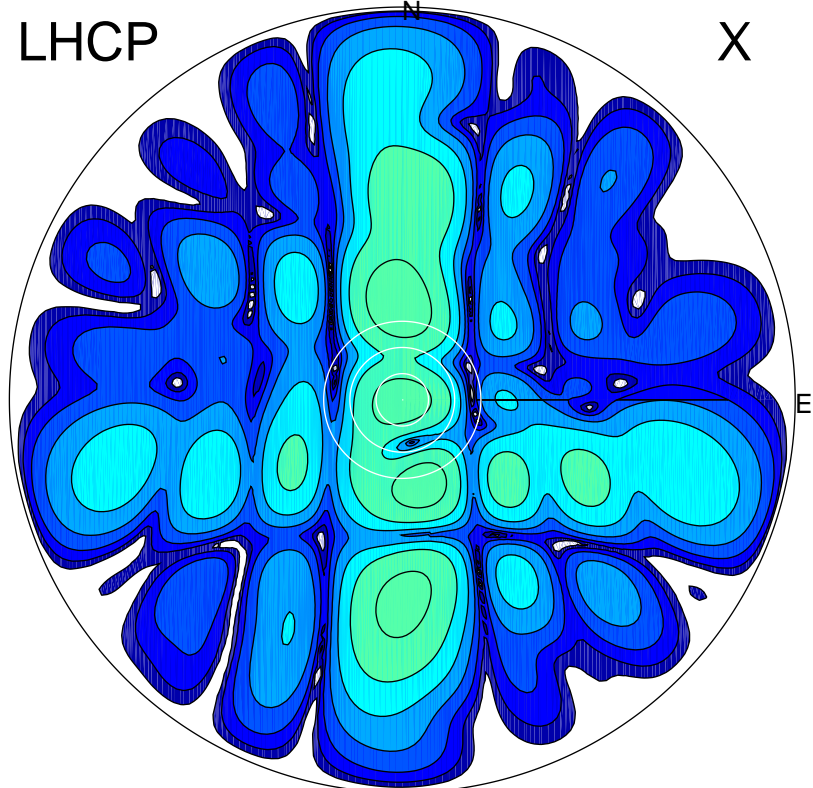
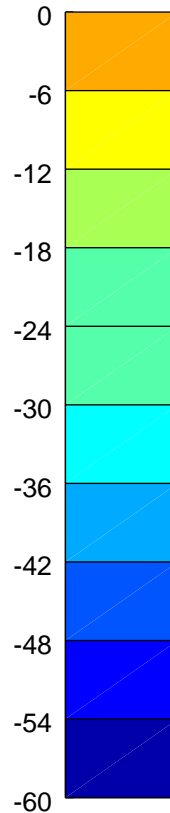


2017-10-19 13:36:05 A2 4.13000000 MHz 807.0 kW

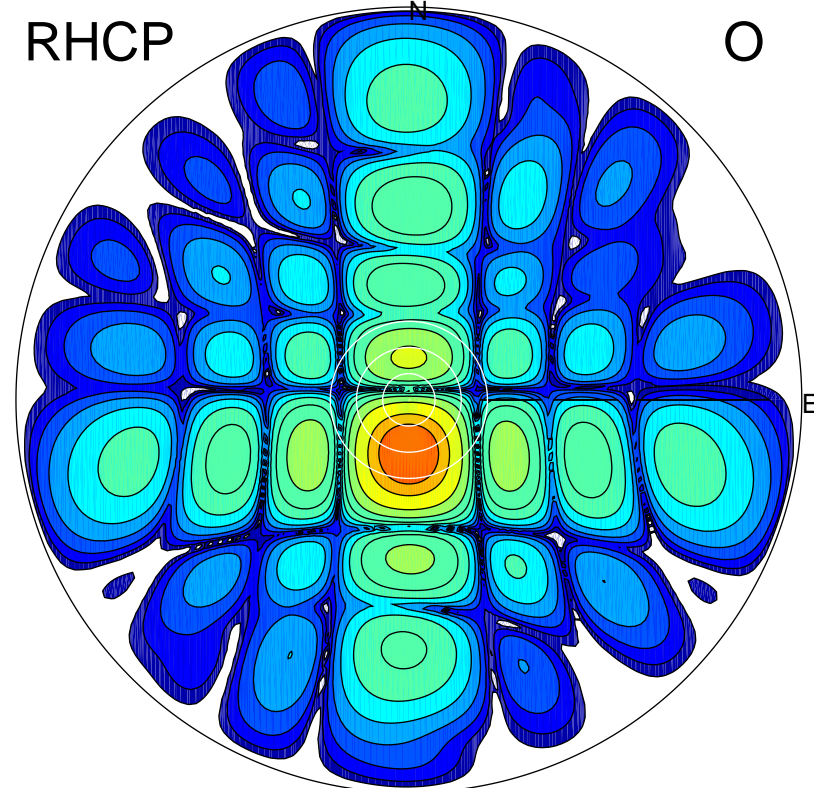
LHCP



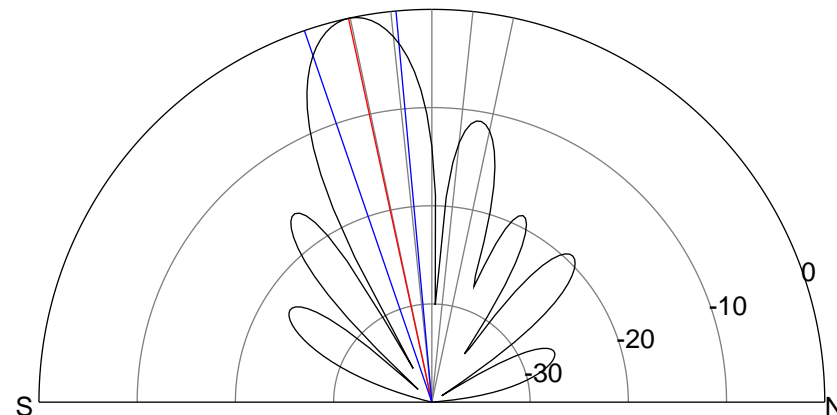
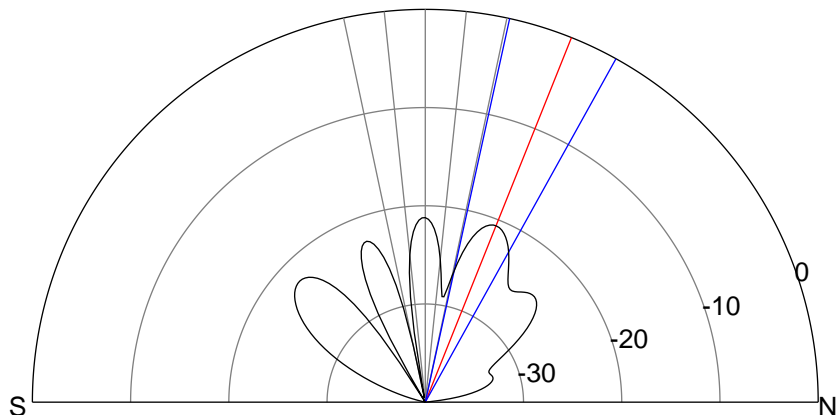
X



RHCP



O



### ERP 1.2 MW

Peak gain 1.8 dBi at Az 358 Zen 22  
RHCP gain -0.2 dBi  
N-S peak 1.8 dBi at Zen 21.8  
N-S -3 dB beamwidth 16.6 deg.

### ERP 141.2 MW

Peak gain 22.4 dBi at Az 180 Zen 12  
LHCP gain -11.7 dBi  
N-S peak 22.4 dBi at Zen -12.3  
N-S -3 dB beamwidth 13.7 deg.